

SET LAUFEN PRO S

Countertop basin 81096.2



TECHNICAL DATA

Order no.	81096.2
Certified to	EN 31
Dimensions	550 x 465 mm
Inside dimensions of the basin	510 x 303 mm
matching for	Vanity unit Laufen Pro S, order no. 48335.1, 48335.2
Specification	Charge 104 – 1 centre tap hole
Special specification	Charge 108 – 3 tap holes Charge 109 – without tap hole Charge 136 – 3 tap holes, distance 8 inches Charge 142 – without tap hole, without overflow and without open drain Charge 156 – 1 centre tap hole, without overflow and without open drain
Weight	16,0 kg

Accessories excl. Siphon cover, order no. 81996.3

(3 tap holes not possible)

Pedestal, order no. 81996.2

Mounting acc. excl. Mounting set M10 x 140 mm, order no. 89988.2

Colours see colour table

SPECIFICATION TEXT

Countertop basin LAUFEN PRO S, sanitary ceramic

EN 31, dimensions 550 x 465 mm, angular

1 centre tap hole

Special feature: overflow channel glazed

Further options / accessories: Surface refinement LCC (only white),

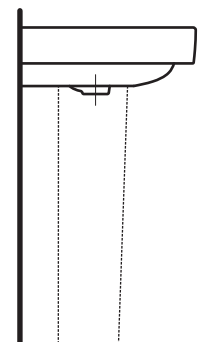
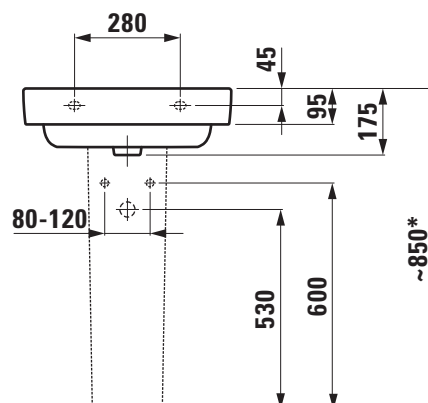
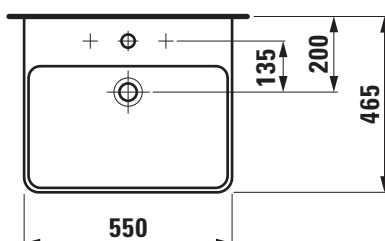
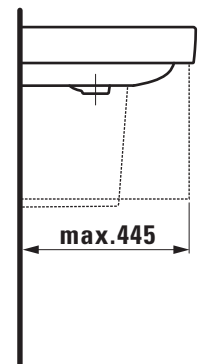
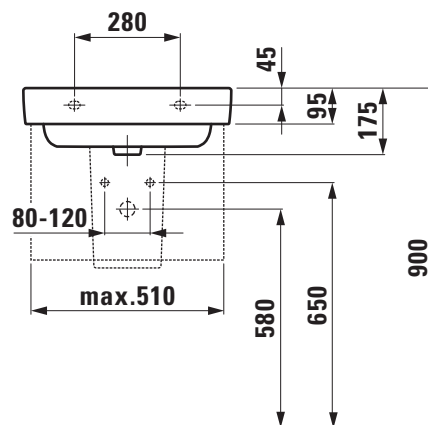
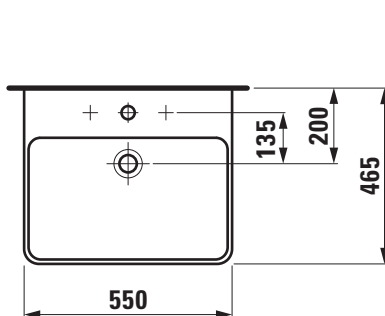
3 tap holes, without tap holes, 3 tap holes distance 8 inches, without

tap holes/ overflow and open drain, 1 tap hole/without overflow and

open drain, pedestal, bathtubs, vanity unit, furniture

Order no. 81096.2

TECHNICAL DRAWINGS / S 1 : 20



* = Effective height must be fixed according to the height of the pedestal.

Countertop basin
81096.3



Order no.	81096.3	Accessories excl.	Siphon cover, order no. 81996.3
Certified to	EN 31		(3 tap holes not possible)
Dimensions	600 x 465 mm		Pedestal, order no. 81996.2
Inside dimensions of the basin	555 x 310 mm	Mounting acc. excl.	Mounting set M10 x 140 mm, order no. 89988.2
matching for	Vanity unit Laufen Pro S, order no. 48337.1, 48337.2	Colours	see colour table
Specification	Charge 104 – 1 centre tap hole	SPECIFICATION TEXT	
Special specification	Charge 108 – 3 tap holes Charge 109 – without tap hole Charge 136 – 3 tap holes, distance 8 inches Charge 142 – without tap hole, without overflow and without open drain Charge 156 – 1 centre tap hole, without overflow and without open drain	Countertop basin LAUFEN PRO S, sanitary ceramic EN 31, dimensions 600 x 465 mm, angular 1 centre tap hole Special feature: overflow channel glazed Further options / accessories: Surface refinement LCC (only white), 3 tap holes, without tap holes, 3 tap holes distance 8 inches, without tap holes/ overflow and open drain, 1 tap hole/without overflow and open drain, pedestal, bathtubs, vanity unit, furniture Order no. 81096.3	
Weight	17,0 kg		

Technical drawings of the S1000 sink unit showing front, side, and rear views with dimensions.

Front View (Left): Shows a rectangular unit with a width of 600 mm and a total height of 465 mm. The sink opening is 200 mm high and 135 mm wide. The unit is mounted on a pedestal.

Side View (Top): Shows the unit's profile with a width of 280 mm. The sink opening is 175 mm high. The unit is mounted on a pedestal with a height of 580 mm. The total height from the floor to the top of the unit is 900 mm. The unit is shown in a standard position.

Side View (Bottom): Shows the unit's profile with a width of 280 mm. The sink opening is 175 mm high. The unit is mounted on a pedestal with a height of 530 mm. The total height from the floor to the top of the unit is ~850* mm. The unit is shown in a standard position.

Rear View (Right): Shows the unit's profile with a width of 445 mm. The unit is shown in a standard position.

Dimensions:

- Width: 600 mm
- Height: 465 mm
- Sink opening height: 200 mm
- Sink opening width: 135 mm
- Unit width: 280 mm
- Sink opening height: 175 mm
- Unit height: 580 mm
- Total height: 900 mm
- Unit width: 445 mm
- Unit height: 530 mm
- Total height: ~850*

* = Effective height must be fixed according to the height of the pedestal.

LAUFEN

SET LAUFEN PRO S

Countertop basin 81096.4



TECHNICAL DATA

Order no.	81096.4
Certified to	EN 31
Dimensions	650 x 465 mm
Inside dimensions of the basin	600 x 310 mm
matching for	Vanity unit Laufen Pro S, order no. 48342.1, 48342.2
Specification	Charge 104 – 1 centre tap hole
Special specification	Charge 108 – 3 tap holes
	Charge 109 – without tap hole
	Charge 136 – 3 tap holes, distance 8 inches
	Charge 142 – without tap hole, without overflow and without open drain
	Charge 156 – 1 centre tap hole, without overflow and without open drain
Weight	17,5 kg

Accessories excl. Siphon cover, order no. 81996.3

(3 tap holes not possible)

Pedestal, order no. 81996.2

Mounting acc. excl. Mounting set M10 x 140 mm, order no. 89988.2

Colours see colour table

SPECIFICATION TEXT

Countertop basin LAUFEN PRO S, sanitary ceramic

EN 31, dimensions 650 x 465 mm, angular

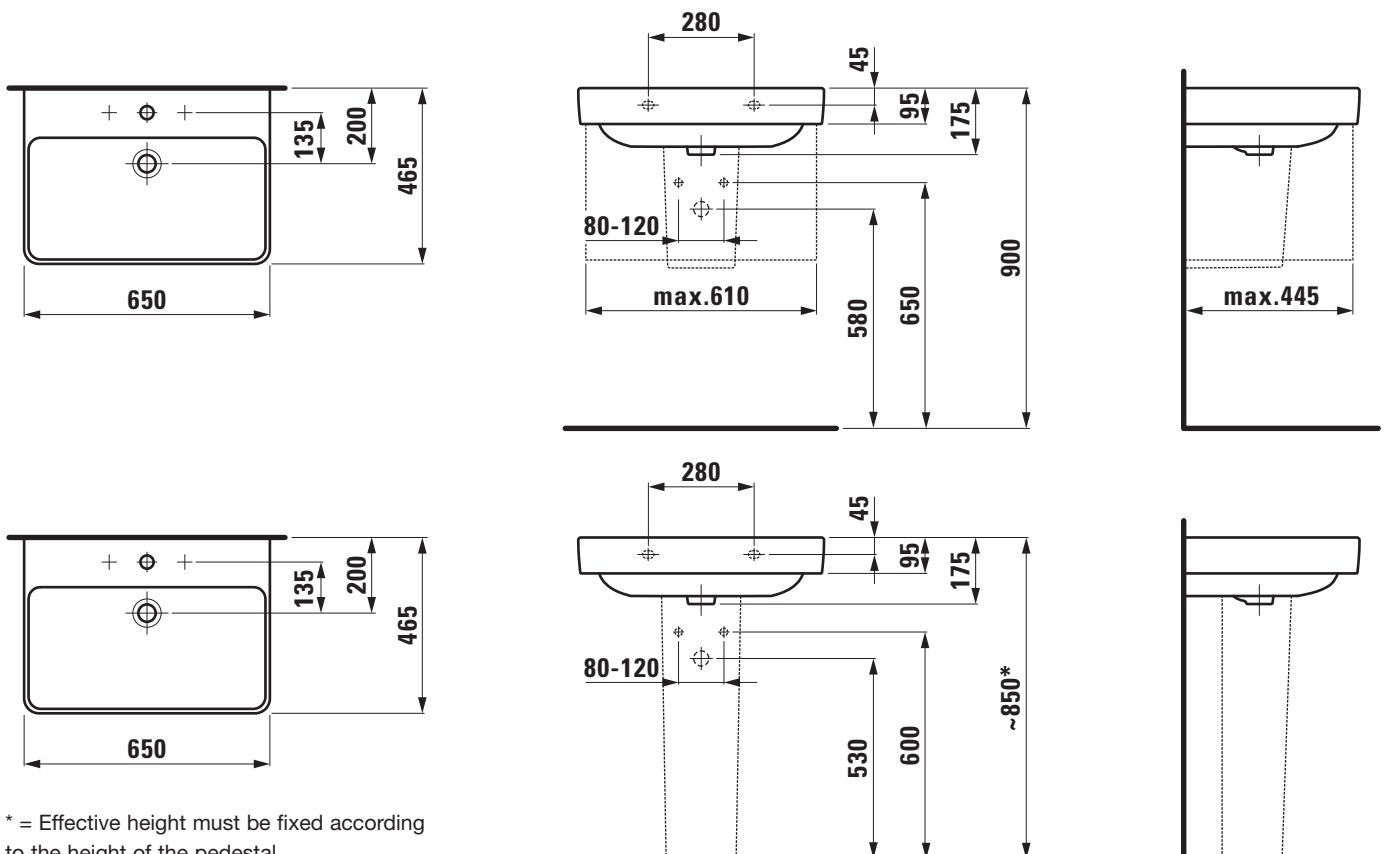
1 centre tap hole

Special feature: overflow channel glazed

Further options / accessories: Surface refinement LCC (only white), 3 tap holes, without tap holes, 3 tap holes distance 8 inches, without tap holes/ overflow and open drain, 1 tap hole/without overflow and open drain, pedestal, bathtubs, vanity unit, furniture

Order no. 81096.4

TECHNICAL DRAWINGS / S 1 : 20



SET LAUFEN PRO S

Countertop basin 81096.7



TECHNICAL DATA

Order no.	81096.7
Certified to	EN 31
Dimensions	700 x 465 mm
Inside dimensions of the basin	680 x 310 mm
matching for	Vanity unit Laufen Pro S, order no. 48345.1, 48345.2
Specification	Charge 104 – 1 centre tap hole
Special specification	Charge 108 – 3 tap holes Charge 109 – without tap hole Charge 136 – 3 tap holes, distance 8 inches Charge 142 – without tap hole, without overflow and without open drain Charge 156 – 1 centre tap hole, without overflow and without open drain
Weight	19,0 kg

Accessories excl. Siphon cover, order no. 81996.3

(3 tap holes not possible)

Pedestal, order no. 81996.2

Mounting acc. excl. Mounting set M10 x 140 mm, order no. 89988.2

Colours see colour table

SPECIFICATION TEXT

Countertop basin LAUFEN PRO S, sanitary ceramic
EN 31, dimensions 700 x 465 mm, angular

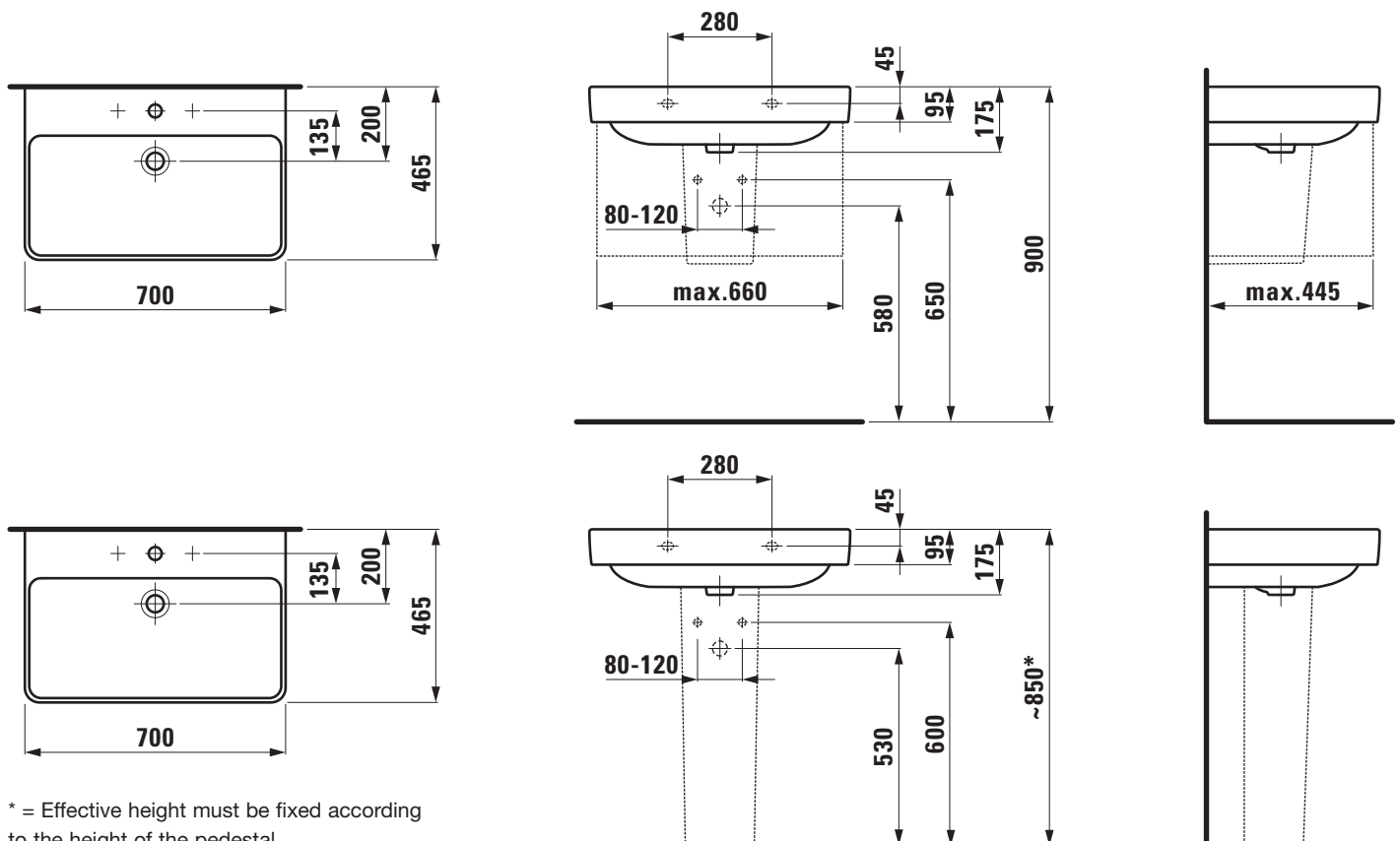
1 centre tap hole

Special feature: overflow channel glazed

Further options / accessories: Surface refinement LCC (only white),
3 tap holes, without tap holes, 3 tap holes distance 8 inches, without
tap holes/ overflow and open drain, 1 tap hole/without overflow and
open drain, pedestal, bathtubs, vanity unit, furniture

Order no. 81096.7

TECHNICAL DRAWINGS / S 1 : 20



SET LAUFEN PRO S

Countertop basin 81396.5



TECHNICAL DATA

Order no.	81396.5
Certified to	EN 31
Dimensions	850 x 465 mm
Inside dimensions of the basin	670 x 285 mm
matching for	Vanity unit Laufen Pro S, order no. 48350.1, 48350.2
Specification	Charge 104 – 1 centre tap hole
Special specification	Charge 108 – 3 tap holes Charge 109 – without tap hole Charge 136 – 3 tap holes, distance 8 inches
Weight	21,7 kg
Accessories excl.	Siphon cover, order no. 81996.3 (3 tap holes not possible) Pedestal, order no. 81996.2 Towel rack, order no. 38596.0

Mounting acc. excl. Mounting set M10 x 140 mm, order no. 89988.2

Colours see colour table

SPECIFICATION TEXT

Countertop basin LAUFEN PRO S, sanitary ceramic

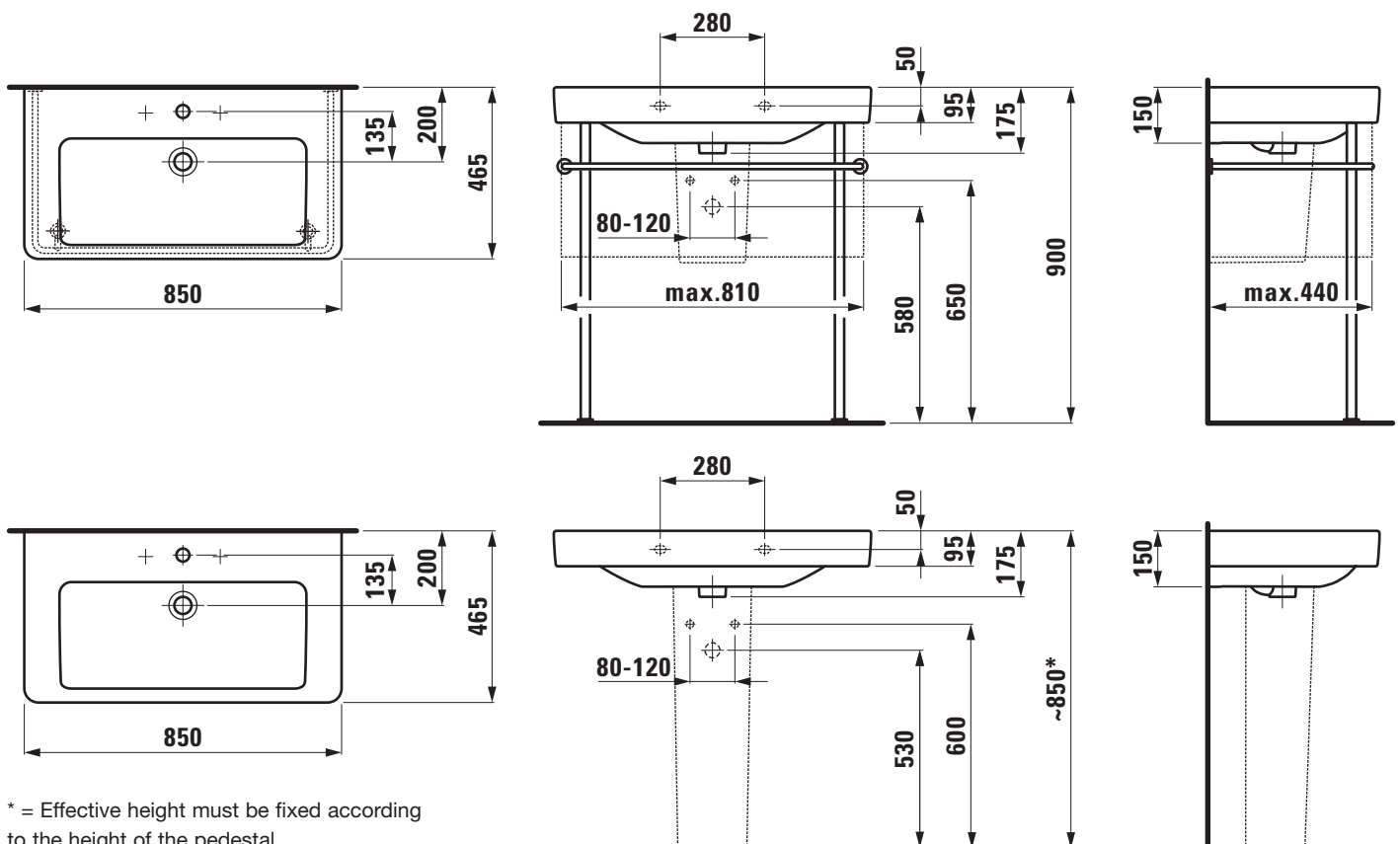
EN 31, dimensions 850 x 465 mm, angular

1 centre tap hole

Special feature: overflow channel glazed

Further options / accessories: Surface refinement LCC (only white), 3 tap holes, without tap holes, 3 tap holes distance 8 inches, siphon cover, pedestal, towel rack, bathtubs, vanity unit, furniture
Order no. 81396.5

TECHNICAL DRAWINGS / S 1 : 20



SET LAUFEN PRO S

Countertop basin 81396.6



TECHNICAL DATA

Order no.	81396.6
Certified to	EN 31
Dimensions	1050 x 465 mm
Inside dimensions of the basin	675 x 285 mm
matching for	Vanity unit Laufen Pro S, order no. 48355.1, 48355.2
Specification	Charge 104 – 1 centre tap hole
Special specification	Charge 108 – 3 tap holes Charge 109 – without tap hole Charge 136 – 3 tap holes, distance 8 inches
Weight	25,5 kg
Accessories excl.	Siphon cover, order no. 81996.3 (3 tap holes not possible) Pedestal, order no. 81996.2 Towel rack, order no. 38596.1

Mounting acc. excl. Mounting set M10 x 140 mm, order no. 89988.2

Colours see colour table

SPECIFICATION TEXT

Countertop basin LAUFEN PRO S, sanitary ceramic

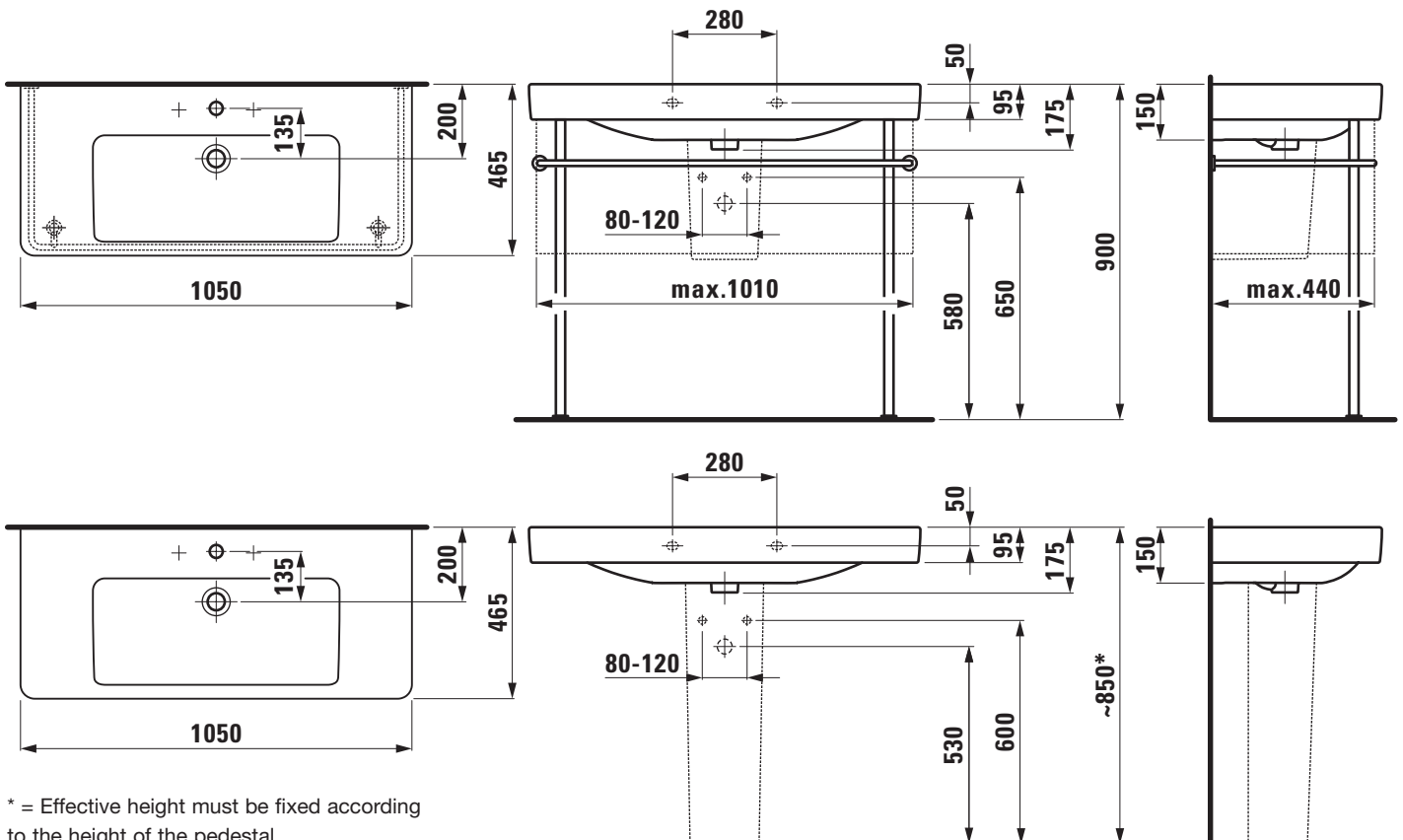
EN 31, dimensions 1050 x 465 mm, angular

1 centre tap hole

Special feature: overflow channel glazed

Further options / accessories: Surface refinement LCC (only white),
3 tap holes, without tap holes, 3 tap holes distance 8 inches, siphon cover, pedestal, towel rack, bathtubs, vanity unit, furniture
Order no. 81396.6

TECHNICAL DRAWINGS / S 1 : 20



SET LAUFEN PRO S

Double countertop basin

81496.5



TECHNICAL DATA

Order no.	81496.5
Certified to	EN 31
Dimensions	1200 x 470 mm
Inside dimensions of the basin	1140 x 295 mm
matching for	Vanity unit Laufen Pro S, order no. 48356.1, 48356.2
Specification	Charge 104 – 1 centre tap hole
Special specification	Charge 107 – 1 tap hole left, 1 tap hole right Charge 108 – 3 tap holes Charge 109 – without tap hole
Weight	
Accessories excl.	Siphon cover, order no. 81996.3 (2 or 3 tap holes not possible) Pedestal, order no. 81996.2 Towel rack, order no. 38596.3

Mounting acc. excl. 2x Mounting set M10 x 140 mm, order no. 89988.2

Colours see colour table

SPECIFICATION TEXT

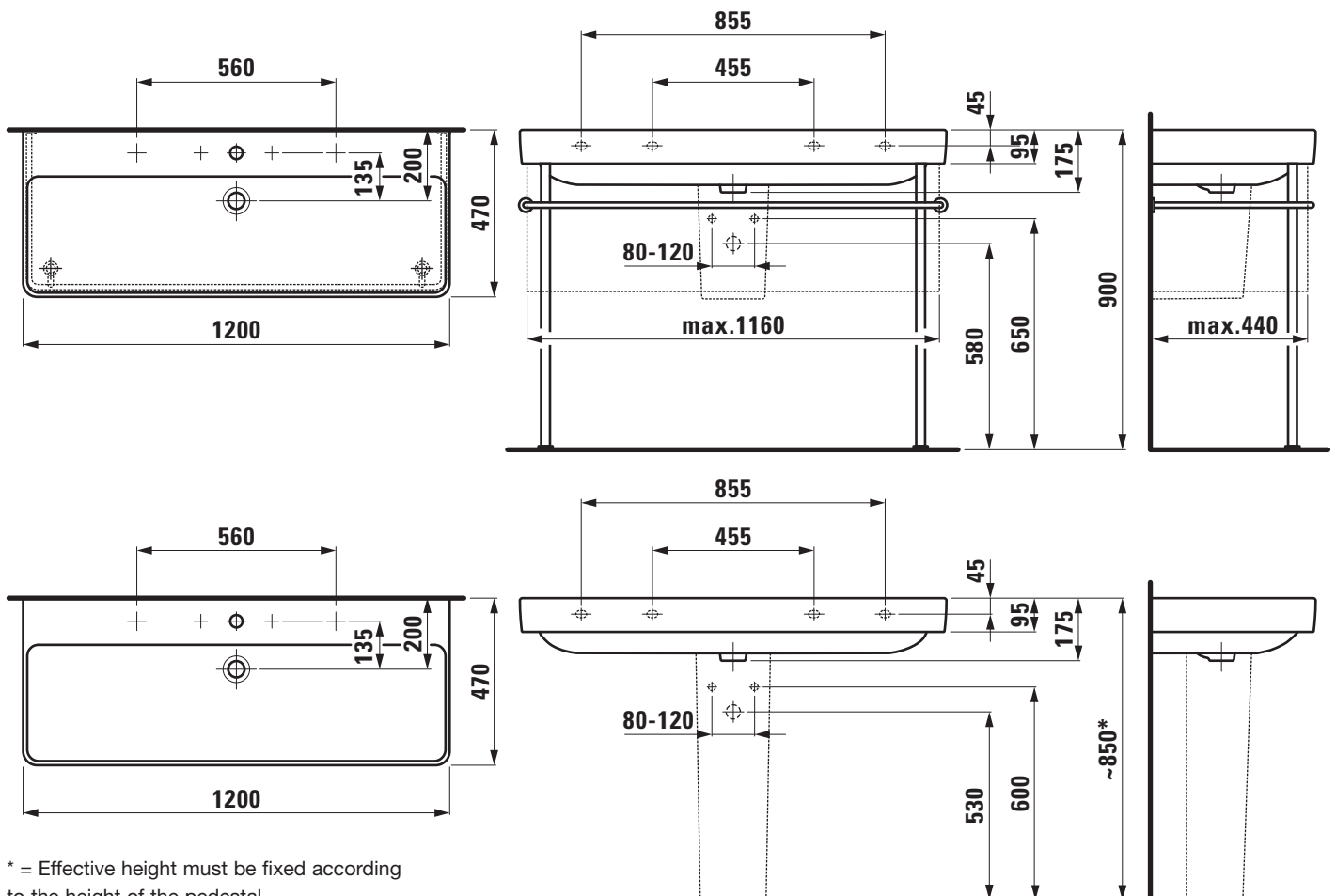
Double countertop basin LAUFEN PRO S, sanitary ceramic
EN 31, dimensions 1200 x 470 mm, angular
1 centre tap hole

Special feature: overflow channel glazed

Further options / accessories: Surface refinement LCC (only white), 1 tap hole left and right, 3 tap holes, without tap holes, siphon cover, pedestal, towel rack, bathtubs, vanity unit, furniture

Order no. 81496.5

TECHNICAL DRAWINGS / S 1 : 20



Double countertop basin
81496.6



Order no.	81496.6
Certified to	EN 31
Dimensions	1200 x 470 mm
Inside dimensions of the basin	per basin 500 x 295 mm
matching for	Vanity unit Laufen Pro S, order no. 48356.3, 48356.4
Specification	Charge 104 – per basin 1 centre tap hole per basin 1 overflow
Special specification	Charge 108 – per basin 3 tap holes per basin 1 overflow Charge 109 – without tap holes per basin 1 overflow Charge 136 – per basin 3 tap holes, distance 8 inches
Weight	

Colours	see colour table
---------	------------------

Further options / accessories: Surface refinement LCC (only white), per basin 3 tap holes, without tap holes, per basin 3 tap holes distance 8 inches, siphon cover, pedestal, towel rack, bathtubs, vanity unit, furniture
Order no. 81496.6

* = Effective height must be fixed according to the height of the pedestal

* = Effective height must be fixed according to the height of the pedestal.

SET LAUFEN PRO S

Double countertop basin 81496.8



TECHNICAL DATA

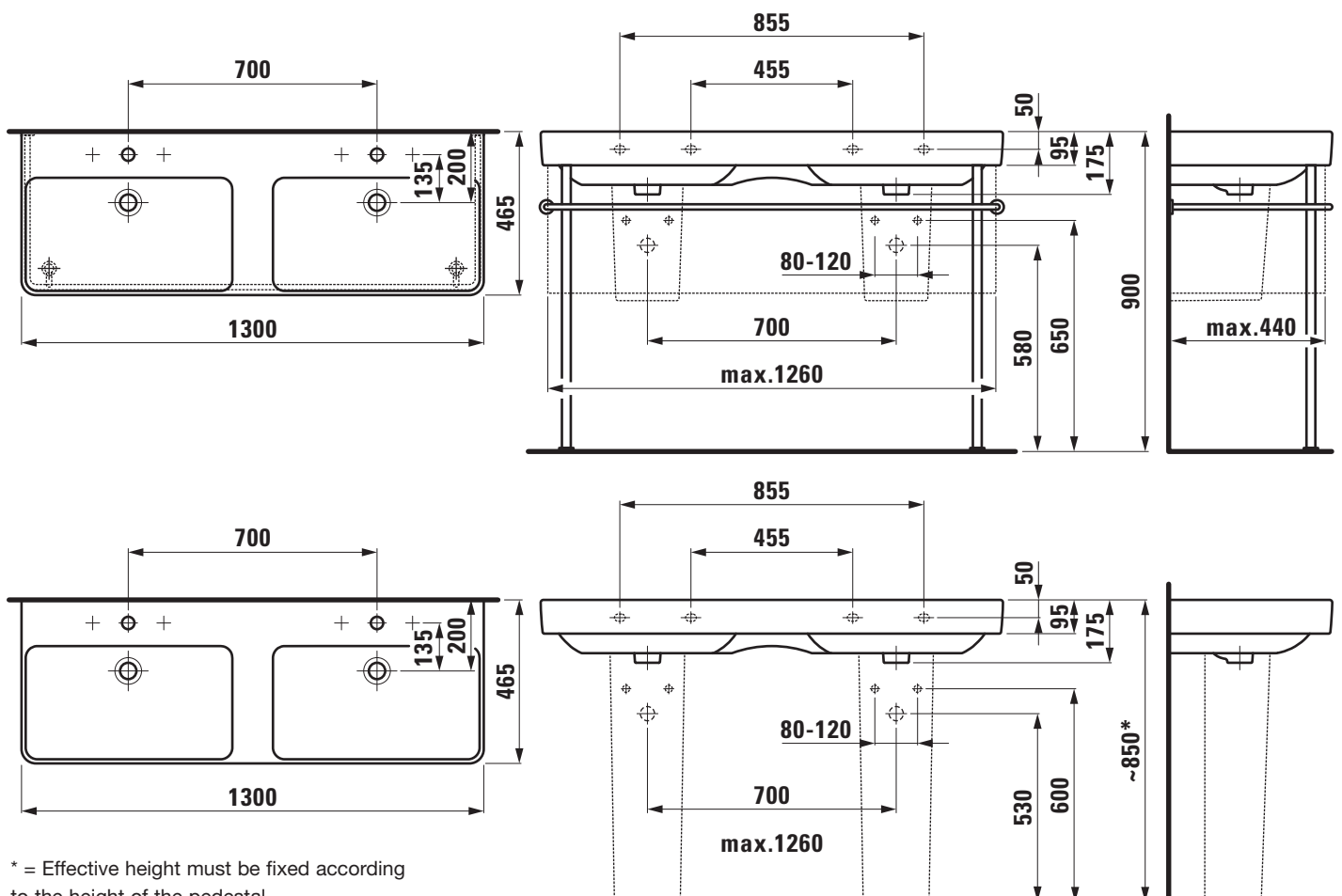
Order no.	81496.8
Certified to	EN 31
Dimensions	1300 x 465 mm
Inside dimensions of the basin	per basin 295 x 540 mm
matching for	Vanity unit Laufen Pro S, order no. 48357.2, 48357.1
Specification	Charge 104 – per basin 1 centre tap hole per basin 1 overflow
Special specification	Charge 108 – per basin 3 tap holes per basin 1 overflow Charge 109 – without tap holes per basin 1 overflow Charge 136 – per basin 3 tap holes, distance 8 inches
Weight	32,0 kg

Accessories excl.	Siphon cover, order no. 81996.3 (3 tap holes not possible) Pedestal, order no. 81996.2 Towel rack, order no. 38596.2
Mounting acc. excl.	2x Mounting set M10 x 140 mm, order no. 89988.2
Colours	see colour table

SPECIFICATION TEXT

Double countertop basin LAUFEN PRO S, sanitary ceramic
EN 31, dimensions 1300 x 465 mm, angular
per basin 1 centre tap hole
Special feature: overflow channel glazed
Further options / accessories: Surface refinement LCC (only white), per basin 3 tap holes, without tap holes, per basin 3 tap holes distance 8 inches, siphon cover, pedestal, towel rack, bathtubs, vanity unit, furniture
Order no. 81496.8

TECHNICAL DRAWINGS / S 1 : 20



SET LAUFEN PRO S

Siphon cover

81996.3



TECHNICAL DATA

Order no.	81996.3
matching for	Washbasin, order no. 81096.2, 81096.3, 81096.4, 81096.7, 81396.5, 81396.6, 81496.5, 81496.6, 81496.8 (not for options with 2 or 3 tap holes)
Weight	8,4 kg
Mounting acc. incl.	Device for fixing, order no. 89001.3
Colours	see colour table

SPECIFICATION TEXT

Siphon cover LAUFEN PRO S, sanitary ceramic
matching washbasin order no. 81096.2, 81096.3, 81096.4, 81096.7, 81396.5, 81396.6, 81496.5, 81496.8 (not for options with 2 or 3 tap holes)

Order no. 81996.3



TECHNICAL DATA

Order no.	81996.2
matching for	Washbasin, order no. 81096.2, 81096.3, 81096.4, 81096.7, 81396.5, 81396.6, 81496.5, 81496.6 81496.8
Weight	12,0 kg
Colours	see colour table

SPECIFICATION TEXT

Pedestal LAUFEN PRO S, sanitary ceramic
 matching washbasin order no. 81096.2, 81096.3, 81096.4, 81096.7, 81396.5, 81396.6, 81496.5, 81496.8
 Order no. 81996.2

SET LAUFEN PRO S

Countertop basin Compact

81895.8



TECHNICAL DATA

Order no.	81895.8
Certified to	EN 31
Dimensions	550 x 380 mm
Inside dimensions of the basin	500 x 225 mm
matching for	Vanity unit Laufen Pro S, order no. 48302.1, 48302.2
Specification	Charge 104 – 1 centre tap hole
Special specification	Charge 109 – without tap hole Charge 142 – without tap hole, without overflow and without open drain Charge 156 – 1 centre tap hole, without overflow and without open drain
Weight	12,0 kg
Accessories excl.	Siphon cover, order no. 81995.1 Pedestal, order no. 81995.0

Mounting acc. excl. Mounting set M10 x 140 mm, order no. 89988.2

Colours see colour table

SPECIFICATION TEXT

Compact countertop basin LAUFEN PRO S, sanitary ceramic EN 31

dimensions 550 x 380 mm, , angular

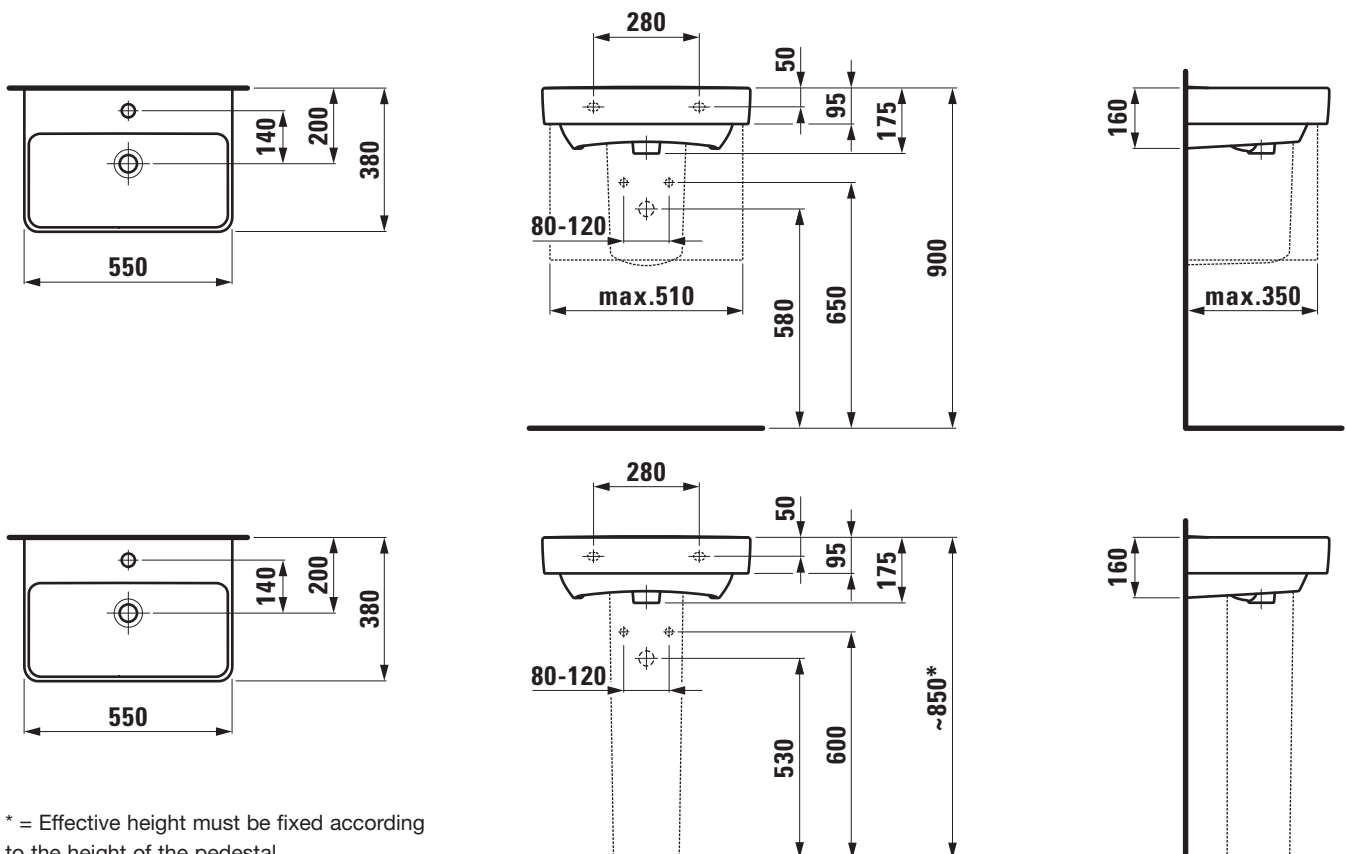
1 centre tap hole

Special feature: overflow channel glazed

Further options / accessories: Surface refinement LCC (only white), without tap holes, without tap holes/overflow and open drain, 1 tap hole/without overflow and open drain, siphon cover, pedestal, bathtubs, vanity unit, furniture

Order no. 81895.8

TECHNICAL DRAWINGS / S 1 : 20



SET LAUFEN PRO S

Countertop basin Compact

81895.9



TECHNICAL DATA

Order no.	81895.9
Certified to	EN 31
Dimensions	600 x 380 mm
Inside dimensions of the basin	540 x 225 mm mm
matching for	Vanity unit Laufen Pro S, order no. 48303.1, 48303.2
Specification	Charge 104 – 1 centre tap hole
Special specification	Charge 109 – without tap hole Charge 142 – without tap hole, without overflow and without open drain Charge 156 – 1 centre tap hole, without overflow and without open drain
Weight	13,0 kg
Accessories excl.	Siphon cover, order no. 81995.1 Pedestal, order no. 81995.0

Mounting acc. excl. Mounting set M10 x 140 mm, order no. 89988.2

Colours see colour table

SPECIFICATION TEXT

Compact countertop basin LAUFEN PRO S, sanitary ceramic EN 31

dimensions 600 x 380 mm, angular

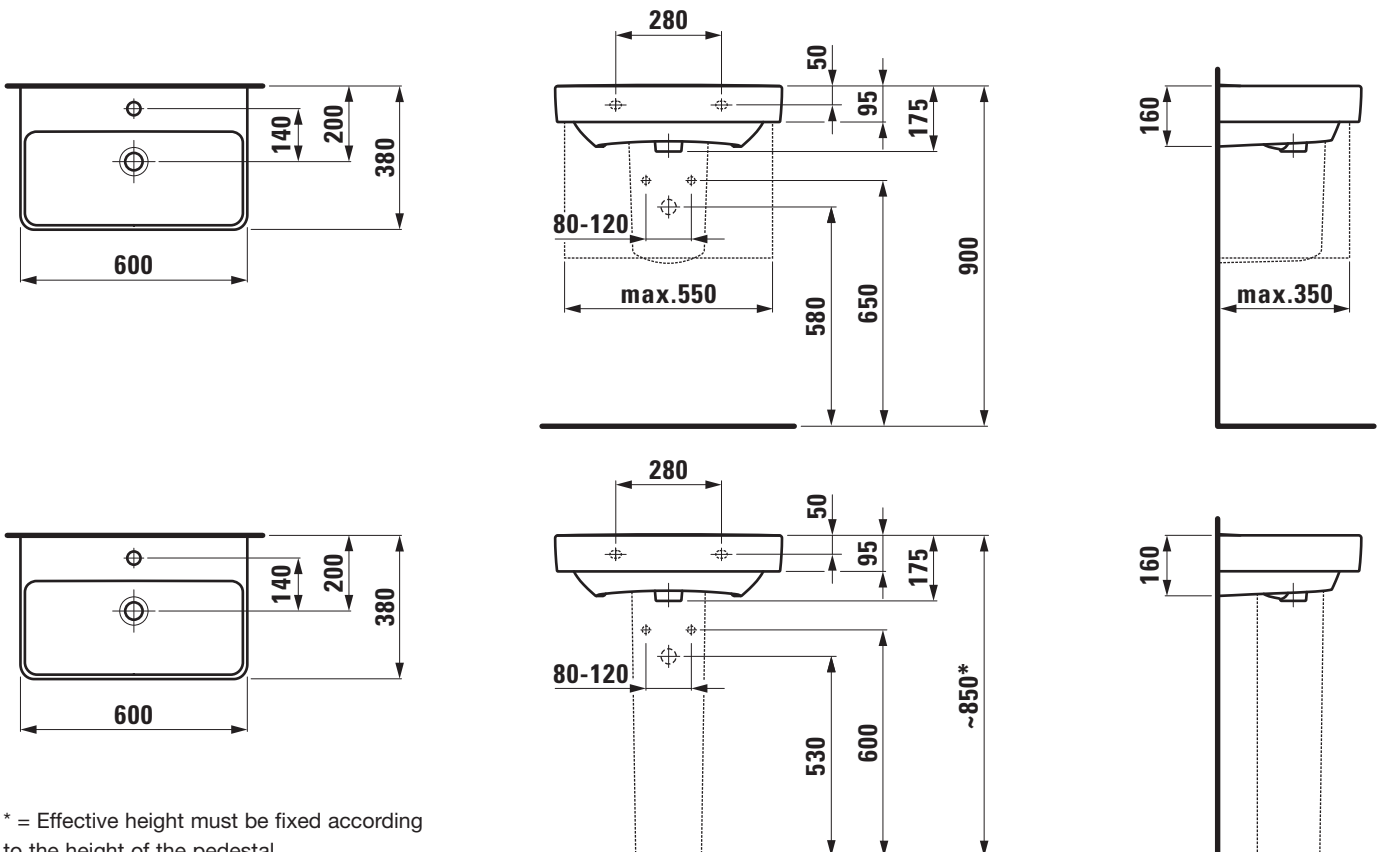
1 centre tap hole

Special feature: overflow channel glazed

Further options / accessories: Surface refinement LCC (only white), without tap holes, without tap holes/overflow and open drain, 1 tap hole/without overflow and open drain, siphon cover, pedestal, bathtubs, vanity unit, furniture

Order no. 81895.9

TECHNICAL DRAWINGS / S 1 : 20



SET LAUFEN PRO S

Siphon cover

81995.1



TECHNICAL DATA

Order no.	81995.1
matching for	Washbasin Compact, order no. 81895.8, 81895.9
Weight	6,8 kg
Mounting acc. incl.	Device for fixing, order no. 89001.5
Colours	see colour table

SPECIFICATION TEXT

Siphon cover LAUFEN PRO S, sanitary ceramic
matching washbasin Compact, order no. 81895.8, 81895.9
Order no. 81995.1



TECHNICAL DATA

Order no.	81995.0
matching for	Washbasin Compact, order no. 81895.8, 81895.9
Weight	12,1 kg
Colours	see colour table

SPECIFICATION TEXT

Pedestal LAUFEN PRO S, sanitary ceramic
matching washbasin Compact, order no. 81895.8, 81895.9
Order no. 81995.0

SET LAUFEN PRO S

Washbasin undersurface ground

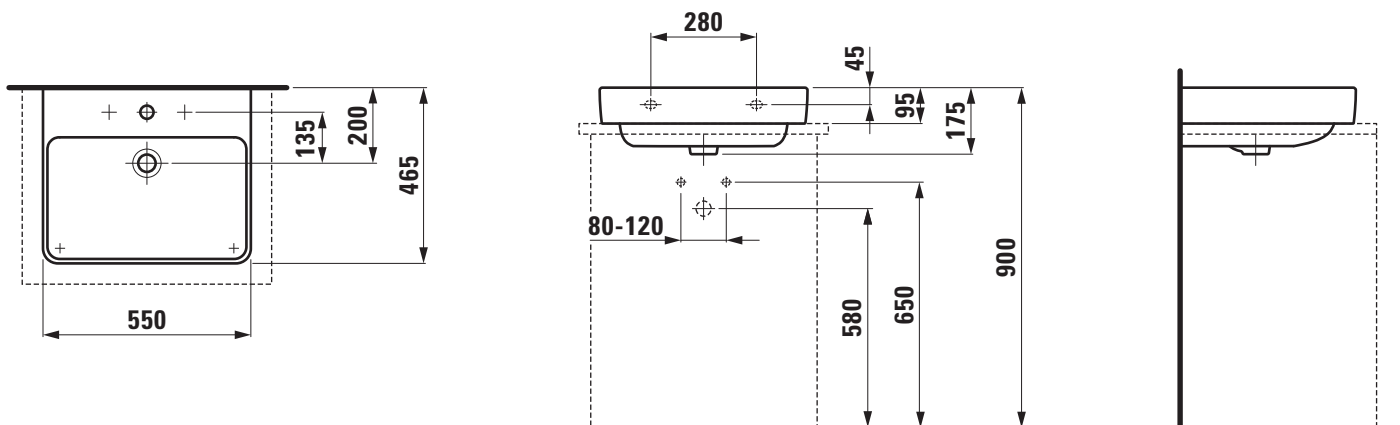
81696.2



TECHNICAL DATA

Order no.	81696.2	Mounting acc. incl.	Template, order no. 89996.1
Certified to	EN 31		Fastening kit, order no. 89194.0
Dimensions	550 x 465 mm	Mounting acc. excl.	Mounting set M10 x 140 mm, order no. 89988.2
Inside dimensions of the basin	510 x 303 mm	Colours	see colour table
matching for	Washtop Case and Space	SPECIFICATION TEXT	
Specification	Always to be fixed to the wall. Charge 104 – 1 centre tap hole	Washbasin undersurface ground LAUFEN PRO S, sanitary ceramic EN 31, dimensions 550 x 465 mm, angular	
Special specification	Charge 108 – 3 tap holes Charge 109 – without tap hole Charge 136 – 3 tap holes, distance 8 inches Charge 142 – without tap hole, without overflow and without open drain Charge 156 – 1 centre tap hole, without overflow and without open drain	1 centre tap hole Special feature: overflow channel glazed Further options / accessories: Surface refinement LCC (only white), 3 tap holes, without tap holes, 3 tap holes distance 8 inches, without tap holes/ overflow and open drain, 1 tap hole/without overflow and open drain, pedestal, bathtubs, furniture, washtops Case and Space	
Weight	16,0 kg	Order no. 81696.2	

TECHNICAL DRAWINGS / S 1 : 20



SET LAUFEN PRO S

Washbasin undersurface ground

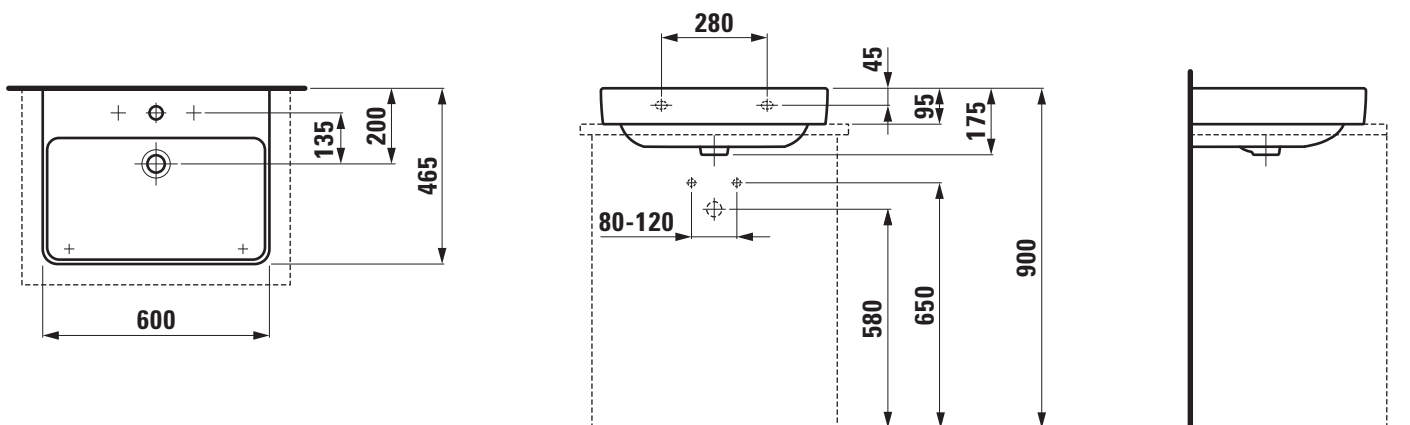
81696.3



TECHNICAL DATA

Order no.	81696.3	Mounting acc. incl.	Template, order no. 89996.2
Certified to	EN 31		Fastening kit, order no. 89194.0
Dimensions	600 x 465 mm	Mounting acc. excl.	Mounting set M10 x 140 mm, order no. 89988.2
Inside dimensions of the basin	555 x 310 mm	Colours	see colour table
matching for	Washtop Case	SPECIFICATION TEXT	
Specification	Always to be fixed to the wall. Charge 104 – 1 centre tap hole	Washbasin undersurface ground LAUFEN PRO S, sanitary ceramic EN 31, dimensions 600 x 465 mm, angular	
Special specification	Charge 108 – 3 tap holes Charge 109 – without tap hole Charge 136 – 3 tap holes, distance 8 inches Charge 142 – without tap hole, without overflow and without open drain Charge 156 – 1 centre tap hole, without overflow and without open drain	1 centre tap hole Special feature: overflow channel glazed Further options / accessories: Surface refinement LCC (only white), 3 tap holes, without tap holes, 3 tap holes distance 8 inches, without tap holes/ overflow and open drain, 1 tap hole/without overflow and open drain, pedestal, bathtubs, furniture, washtops Case	
Weight	17,0 kg	Order no. 81696.3	

TECHNICAL DRAWINGS / S 1 : 20



SET LAUFEN PRO S

Washbasin undersurface ground 81696.4



TECHNICAL DATA

Order no.	81696.4
Certified to	EN 31
Dimensions	650 x 465 mm
Inside dimensions of the basin	600 x 310 mm
matching for	Washtop Case
Specification	Always to be fixed to the wall. Charge 104 – 1 centre tap hole
Special specification	Charge 108 – 3 tap holes Charge 109 – without tap hole Charge 136 – 3 tap holes, distance 8 inches Charge 142 – without tap hole, without overflow and without open drain Charge 156 – 1 centre tap hole, without overflow and without open drain
Weight	17,5 kg

Mounting acc. incl. Template, order no. 89996.3
Fastening kit, order no. 89194.0

Mounting acc. excl. Mounting set M10 x 140 mm,
order no. 89988.2

Colours see colour table

SPECIFICATION TEXT

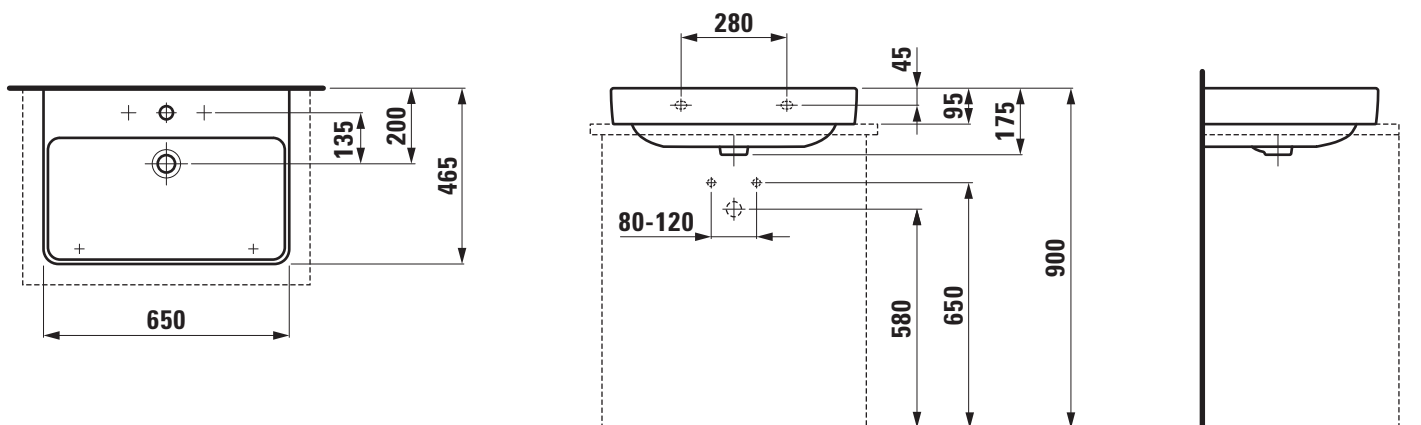
Washbasin undersurface ground LAUFEN PRO S, sanitary ceramic
EN 31, dimensions 650 x 465 mm, angular

1 centre tap hole

Special feature: overflow channel glazed

Further options / accessories: Surface refinement LCC (only white),
3 tap holes, without tap holes, 3 tap holes distance 8 inches, without
tap holes/ overflow and open drain, 1 tap hole/without overflow and
open drain, pedestal, bathtubs, washtops, furniture, washtops Case
Order no. 81696.4

TECHNICAL DRAWINGS / S 1 : 20



SET LAUFEN PRO S

Washbasin undersurface ground 81696.7



TECHNICAL DATA

Order no.	81696.7
Certified to	EN 31
Dimensions	700 x 465 mm
Inside dimensions of the basin	680 x 310 mm
matching for	Washtop Case
Specification	Always to be fixed to the wall. Charge 104 – 1 centre tap hole
Special specification	Charge 108 – 3 tap holes Charge 109 – without tap hole Charge 136 – 3 tap holes, distance 8 inches Charge 142 – without tap hole, without overflow and without open drain Charge 156 – 1 centre tap hole, without overflow and without open drain
Weight	19,0 kg

Mounting acc. incl.	Template, order no. 89996.4 Fastening kit, order no. 89194.0
---------------------	---

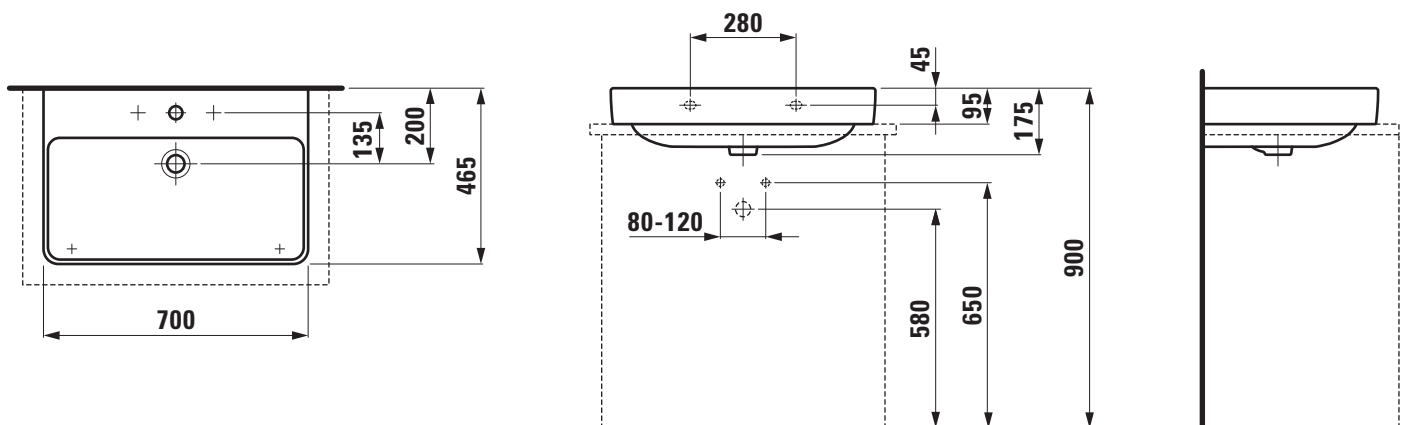
Mounting acc. excl.	Mounting set M10 x 140 mm, order no. 89988.2
---------------------	---

Colours	see colour table
---------	------------------

SPECIFICATION TEXT

Washbasin undersurface ground LAUFEN PRO S, sanitary ceramic EN 31, dimensions 700 x 465 mm, angular
1 centre tap hole
Special feature: overflow channel glazed
Further options / accessories: Surface refinement LCC (only white), 3 tap holes, without tap holes, 3 tap holes distance 8 inches, without tap holes/ overflow and open drain, 1 tap hole/without overflow and open drain, pedestal, bathtubs, washtops, furniture, washtops Case
Order no. 81696.7

TECHNICAL DRAWINGS / S 1 : 20



SET LAUFEN PRO S

Washbasin undersurface ground

81696.5



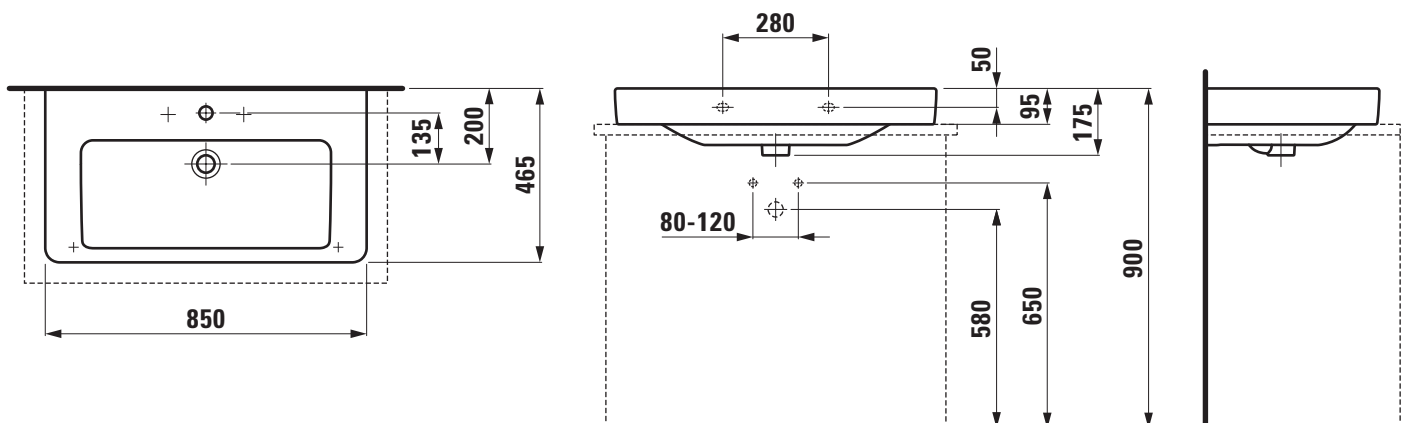
TECHNICAL DATA

Order no.	81696.5
Certified to	EN 31
Dimensions	850 x 465 mm
Inside dimensions of the basin	670 x 285 mm
matching for	Washtop Case
Specification	Always to be fixed to the wall. Charge 104 – 1 centre tap hole
Special specification	Charge 108 – 3 tap holes Charge 109 – without tap hole Charge 136 – 3 tap holes, distance 8 inches
Weight	21,7 kg
Mounting acc. incl.	Template, order no. 89996.5 Fastening kit, order no. 89194.0
Mounting acc. excl.	Mounting set M10 x 140 mm, order no. 89988.2
Colours	see colour table

SPECIFICATION TEXT

Washbasin undersurface ground LAUFEN PRO S, sanitary ceramic
EN 31, dimensions 850 x 465 mm, angular
1 centre tap hole
Special feature: overflow channel glazed
Further options / accessories: Surface refinement LCC (only white),
3 tap holes, without tap holes, 3 tap holes distance 8 inches, bathtubs,
furniture, washtops Case
Order no. 81696.5

TECHNICAL DRAWINGS / S 1 : 20



SET LAUFEN PRO S

Washbasin undersurface ground

81696.6



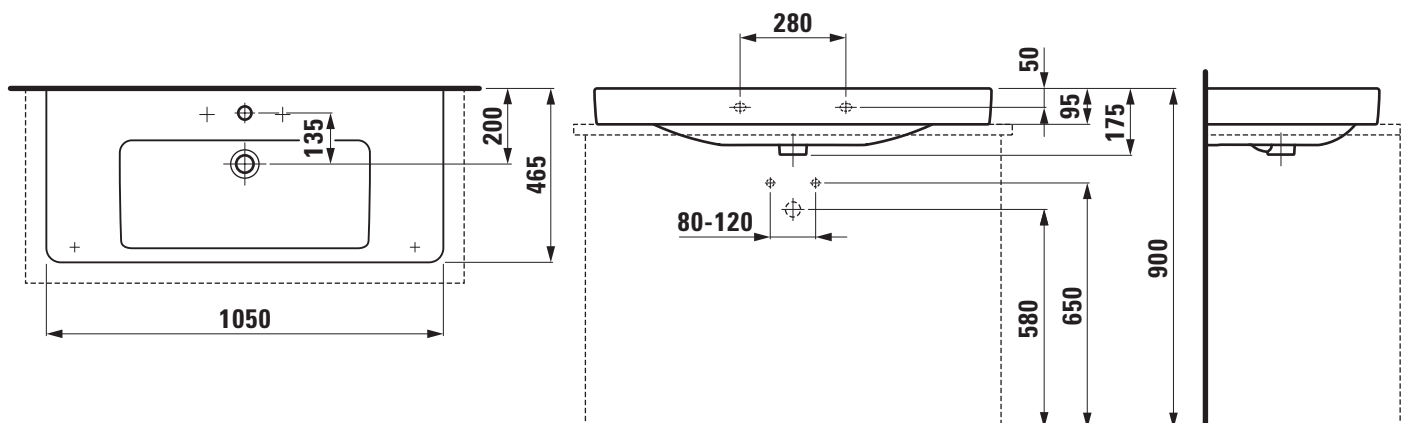
TECHNICAL DATA

Order no.	81696.6
Certified to	EN 31
Dimensions	1050 x 465 mm
Inside dimensions of the basin	675 x 285 mm
matching for	Washtop Case
Specification	Always to be fixed to the wall. Charge 104 – 1 centre tap hole
Special specification	Charge 108 – 3 tap holes Charge 109 – without tap hole Charge 136 – 3 tap holes, distance 8 inches
Weight	25,5 kg
Mounting acc. incl.	Template, order no. 89996.6 Fastening kit, order no. 89194.0
Mounting acc. excl.	Mounting set M10 x 140 mm, order no. 89988.2
Colours	see colour table

SPECIFICATION TEXT

Washbasin undersurface ground LAUFEN PRO S, sanitary ceramic
EN 31, dimensions 1050 x 465 mm, angular
1 centre tap hole
Special feature: overflow channel glazed
Further options / accessories: Surface refinement LCC (only white),
3 tap holes, without tap holes, 3 tap holes distance 8 inches, bathtubs,
furniture, washtops Case
Order no. 81696.6

TECHNICAL DRAWINGS / S 1 : 20



Washbasin Compact undersurface ground
81795.8



TECHNICAL DATA

Order no.	81795.8
Certified to	EN 31
Dimensions	550 x 380 mm
Inside dimensions of the basin	500 x 225 mm
Specification	Always to be fixed to the wall. Charge 104 – 1 centre tap hole
Special specification	Charge 108 – 3 tap holes Charge 109 – without tap hole Charge 142 – without tap hole, without overflow and without open drain Charge 156 – 1 centre tap hole, without overflow and without open drain
Weight	12,0
Mounting acc. incl.	Template, order no. 89896.3 Fastening kit, order no. 89194.0

Mounting acc. excl. Mounting set M10 x 140 mm,
order no. 89988.2

Colours see colour table

SPECIFICATION TEXT

Compact washbasin undersurface ground LAUFEN PRO S, sanitary ceramic

EN 31

dimensions 550 x 380 mm, angular

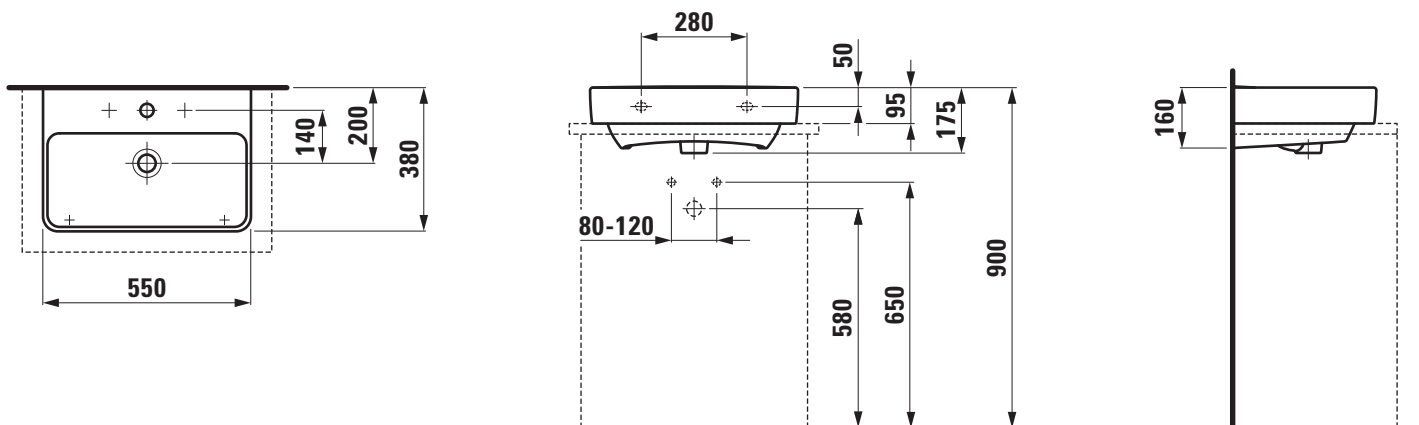
1 centre tap hole

Special feature: overflow channel glazed

Further options / accessories: Surface refinement LCC (only white),
3 tap holes, without tap holes, without tap holes/overflow and open
drain, 1 tap hole/without overflow and open drain, bathtubs, furniture

Order no. 81795.8

TECHNICAL DRAWINGS / S 1 : 20



Washbasin Compact undersurface ground
81795.9



TECHNICAL DATA

Order no.	81795.9
Certified to	EN 31
Dimensions	600 x 380 mm
Inside dimensions of the basin	540 x 225 mm mm
Specification	Always to be fixed to the wall. Charge 104 – 1 centre tap hole
Special specification	Charge 109 – without tap hole Charge 142 – without tap hole, without overflow and without open drain Charge 156 – 1 centre tap hole, without overflow and without open drain
Weight	13,0 kg
Mounting acc. incl.	Template, order no. 89896.4 Fastening kit, order no. 89194.0

Mounting acc. excl. Mounting set M10 x 140 mm,
order no. 89988.2

Colours see colour table

SPECIFICATION TEXT

Compact washbasin undersurface ground LAUFEN PRO S, sanitary ceramic

EN 31

dimensions 600 x 380 mm, angular

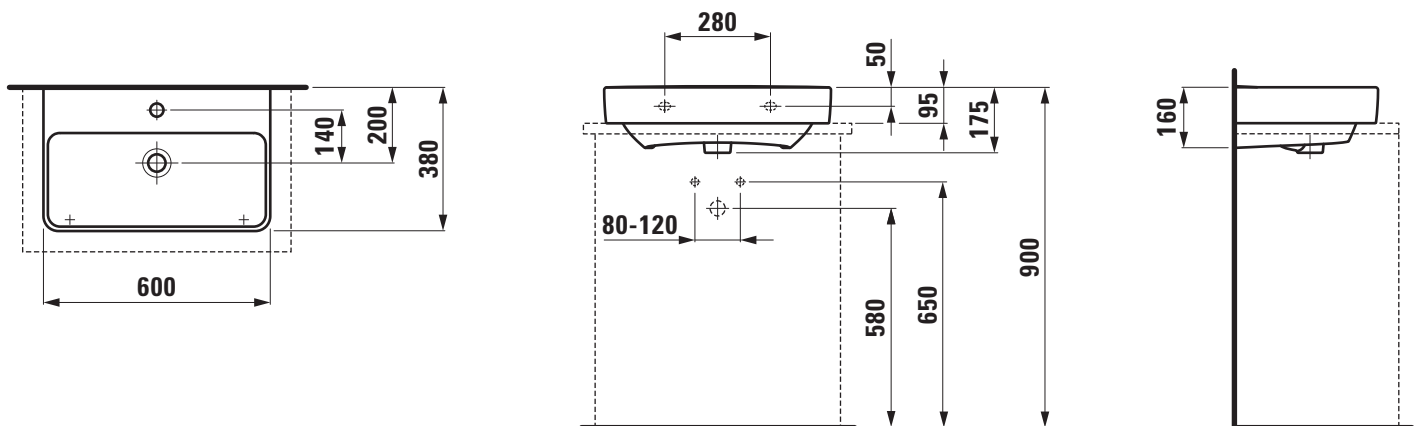
1 centre tap hole

Special feature: overflow channel glazed

Further options / accessories: Surface refinement LCC (only white),
without tap holes, without tap holes/overflow and open drain,
1 tap hole/without overflow and open drain, bathtubs, furniture

Order no. 81795.9

TECHNICAL DRAWINGS / S 1 : 20



Pack washbasin with furniture

86096.1

86096.2



TECHNICAL DATA

Order no.	86096.1 – washbasin with vanity unit, 1 drawer 86096.2 – washbasin with vanity unit, 1 drawer, 1 interior drawer	Mounting information	The walls installed on must meet the requirements of the furniture in terms of weight and the supplied fastening elements. If this cannot be guaranteed another method of installation needs to be chosen.
Certified to	Washbasin – EN 31	Colours ceramic	000 – White
Dimensions (WxHxD)	600 x 460 x 500 mm	Colours furniture	463 – White 475 – White glossy 423 – Wenge 479 – Bright oak 480 – Graphite
Basin capacity	6.6 litre		
Specification	Washbasin: Always to be fixed to the wall. Charge 104 – 1 centre tap hole Furniture: Body/Front – MDF board with PVC foil Integrated handle in the front		
Weight	86096.1 – 37,5 kg 86096.2 – 42,5 kg		
Accessories excl.	Feet (2 pieces), aluminium, order no. 48310.2 Towel rail, anodized aluminium, order no. 49095.2		
Mounting acc. incl.	Installation set for furniture, order no. 49120.6, 49114.0 Space saving siphon, order no. 89424.0		

SPECIFICATION TEXT

Pack washbasin with furniture LAUFEN PRO S

Washbasin: sanitary ceramic, EN 31,
dimensions (WxD) 600 x 500 mm, angular, 1 centre tap hole

Special feature: overflow channel glazed

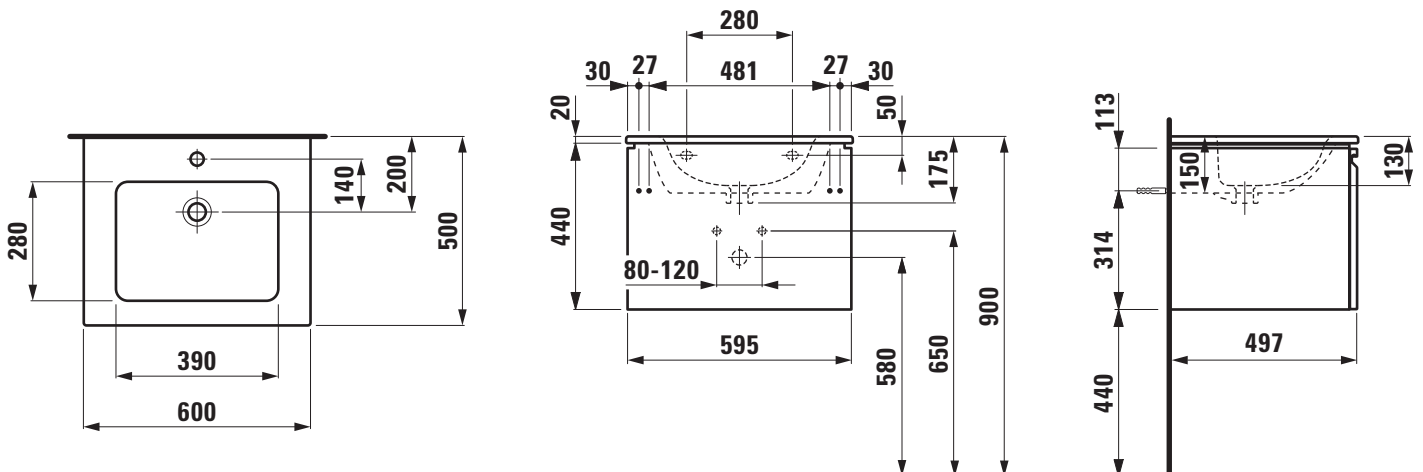
Vanity unit: Body/Front – MDF board with PVC foil, integrated handle in the front, dimensions (WxHxD) 595 x 440 x 497 mm

Further options / accessories: Towel rail anodized aluminium, bathtubs,
furniture

Order no. 86096.1 – washbasin with vanity unit, 1 drawer,

86096.2 – washbasin with vanity unit, 1 drawer, 1 interior drawer

TECHNICAL DRAWINGS / S 1 : 20



SET LAUFEN PRO S

Pack washbasin with furniture

86096.3

86096.4



TECHNICAL DATA

Order no.	86096.3 – washbasin with vanity unit, 1 drawer 86096.4 – washbasin with vanity unit, 1 drawer, 1 interior drawer	Mounting information	The walls installed on must meet the requirements of the furniture in terms of weight and the supplied fastening elements. If this cannot be guaranteed another method of installation needs to be chosen.
Certified to	Washbasin – EN 31	Colours ceramic	000 – White
Dimensions (WxHxD)	800 x 460 x 500 mm	Colours furniture	463 – White 475 – White glossy 423 – Wenge 479 – Bright oak 480 – Graphite
Basin capacity	7.9 litre		
Specification	Washbasin: Always to be fixed to the wall. Charge 104 – 1 centre tap hole Furniture: Body/Front – MDF board with PVC foil Integrated handle in the front		
Weight	86096.3 – 42,9 kg 86096.4 – 48,9 kg		
Accessories excl.	Feet (2 pieces), aluminium, order no. 48310.2 Towel rail, anodized aluminium, order no. 49095.2		
Mounting acc. incl.	Installation set for furniture, order no. 49120.6, 49114.0 Space saving siphon, order no. 89424.0		

SPECIFICATION TEXT

Pack washbasin with furniture LAUFEN PRO S

Washbasin: sanitary ceramic, EN 31,
dimensions (WxD) 800 x 500 mm, angular, 1 centre tap hole

Special feature: overflow channel glazed

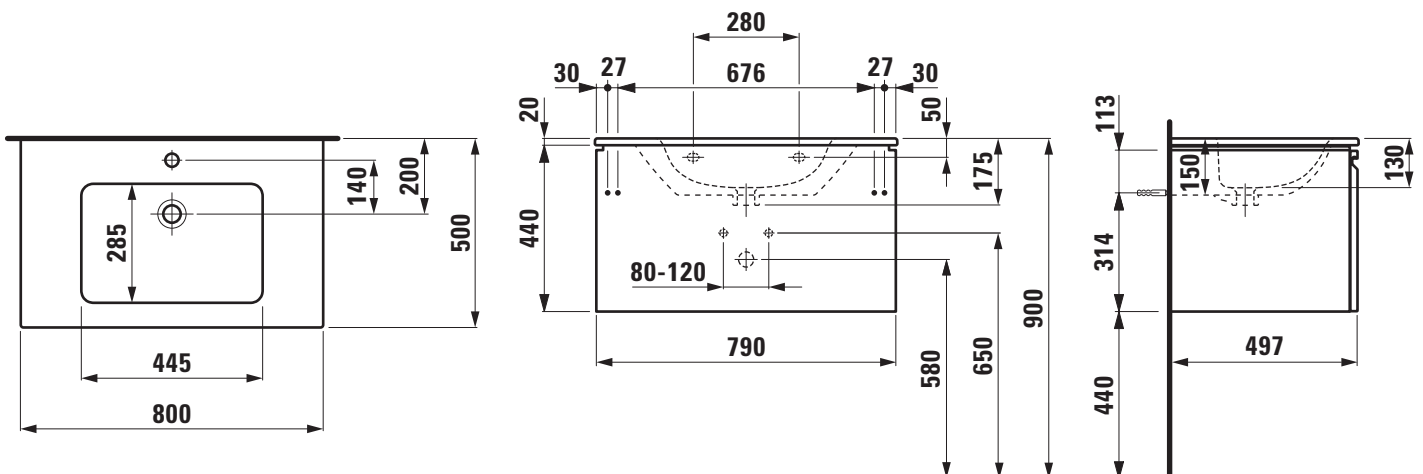
Vanity unit: Body/Front – MDF board with PVC foil, integrated handle in the front, dimensions (WxHxD) 790 x 440 x 497 mm

Further options / accessories: Towel rail anodized aluminium, bathtubs,
furniture

Order no. 86096.3 – washbasin with vanity unit, 1 drawer,

86096.4 – washbasin with vanity unit, 1 drawer, 1 interior drawer

TECHNICAL DRAWINGS / S 1 : 20



SET LAUFEN PRO S

Pack washbasin with furniture

86096.5

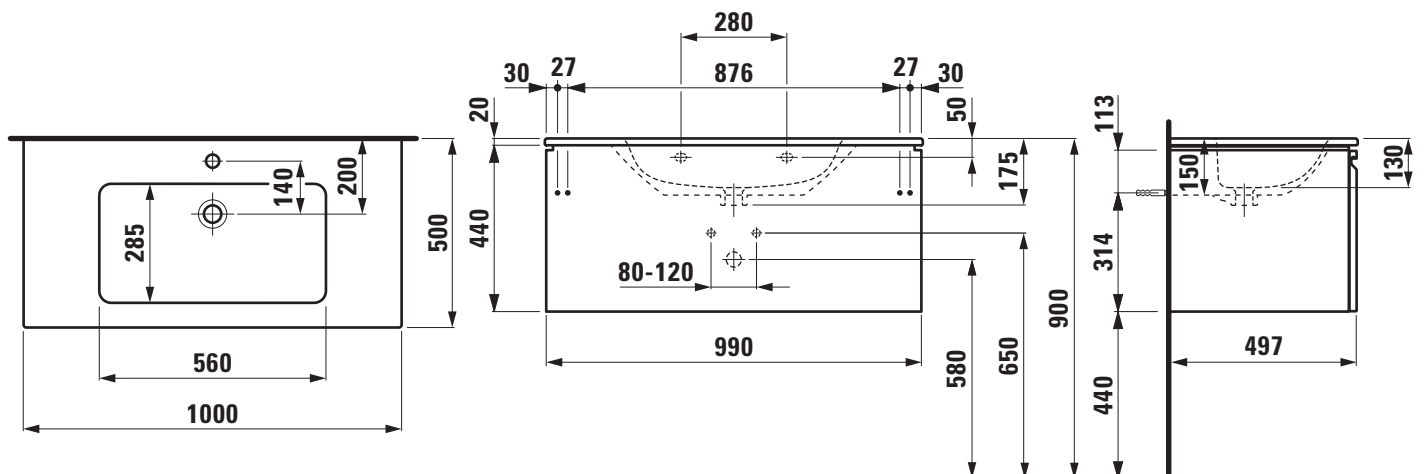
86096.6



TECHNICAL DATA

Order no.	86096.5 – washbasin with vanity unit, 1 drawer 86096.6 – washbasin with vanity unit, 1 drawer, 1 interior drawer	ments of the furniture in terms of weight and the supplied fastening elements. If this cannot be guaranteed another method of installation needs to be chosen.
Certified to	Washbasin – EN 31	
Dimensions (WxHxD)	1000 x 460 x 500 mm	Colours ceramic 000 – White
Basin capacity	10.5 litre	Colours furniture 463 – White
Specification	Washbasin: Always to be fixed to the wall. Charge 104 – 1 centre tap hole Furniture: Body/Front – MDF board with PVC foil Integrated handle in the front	475 – White glossy 423 – Wenge 479 – Bright oak 480 – Graphite
Weight	86096.5 – 48,9 kg 86096.6 – 55,4 kg	SPECIFICATION TEXT Pack washbasin with furniture LAUFEN PRO S Washbasin: sanitary ceramic, EN 31, dimensions (WxD) 1000 x 500 mm, angular, 1 centre tap hole Special feature: overflow channel glazed Vanity unit: Body/Front – MDF board with PVC foil, integrated handle in the front, dimensions (WxHxD) 990 x 440 x 497 mm Further options / accessories: Towel rail anodized aluminium, bathtubs, furniture Order no. 86096.5 – washbasin with vanity unit, 1 drawer, 86096.6 – washbasin with vanity unit, 1 drawer, 1 interior drawer
Accessories excl.	Feet (2 pieces), aluminium, order no. 48310.2 Towel rail, anodized aluminium, order no. 49095.2	
Mounting acc. incl.	Installation set for furniture, order no. 49120.6, 49114.0 Space saving siphon, order no. 89424.0	
Mounting information	The walls installed on must meet the require-	

TECHNICAL DRAWINGS / S 1 : 20



Pack washbasin with furniture

86096.7

86096.8



TECHNICAL DATA

Order no.	86096.7 – washbasin with vanity unit, 1 drawer 86096.8 – washbasin with vanity unit, 1 drawer, 1 interior drawer
Certified to	Washbasin – EN 31
Dimensions (WxHxD)	1200 x 460 x 500 mm
Basin capacity	16.8 litre
Specification	Washbasin: Always to be fixed to the wall. Charge 104 – 1 centre tap hole Charge 107 – 2 tap holes Furniture: Body/Front – MDF board with PVC foil Integrated handle in the front
Weight	
Accessories excl.	Feet (2 pieces), aluminium, order no. 48310.2 Towel rail, anodized aluminium, order no. 49095.2
Mounting acc. incl.	Installation set for furniture, order no. 49120.6, 49114.0 Space saving siphon, order no. 89424.0

Mounting information The walls installed on must meet the requirements of the furniture in terms of weight and the supplied fastening elements. If this cannot be guaranteed another method of installation needs to be chosen.

Colours ceramic	000 – White
Colours furniture	463 – White 475 – White glossy 423 – Wenge 479 – Bright oak 480 – Graphite

SPECIFICATION TEXT

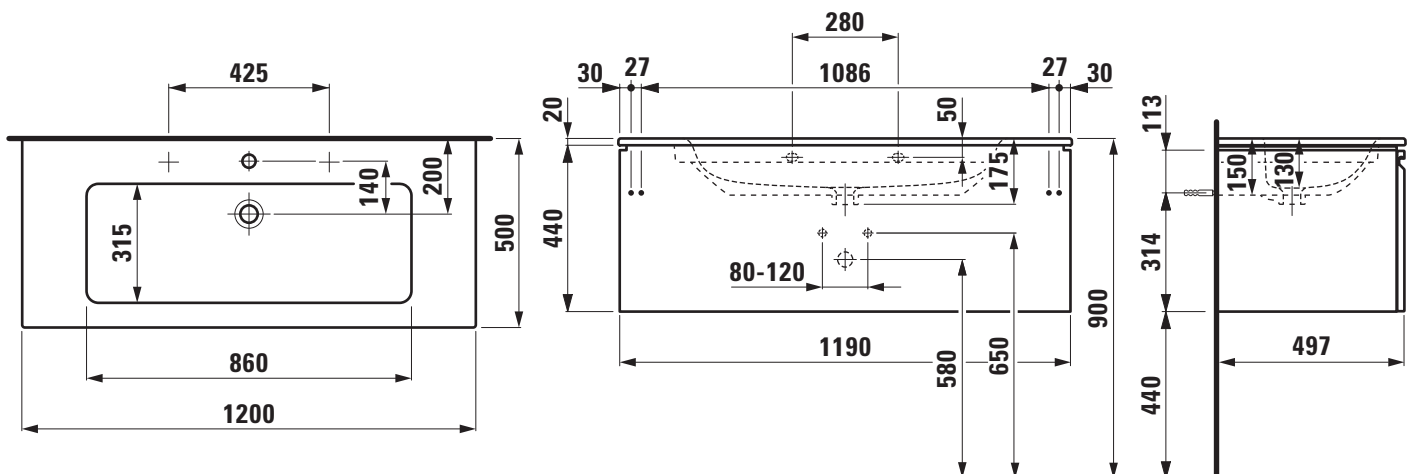
Pack washbasin with furniture LAUFEN PRO S

Washbasin: sanitary ceramic, EN 31,
dimensions (WxD) 1200 x 500 mm, angular,
Charge 104 – 1 centre tap hole, Charge 107 – 2 tap holes
Special feature: overflow channel glazed

Vanity unit: Body/Front – MDF board with PVC foil, integrated handle in the front, dimensions (WxHxD) 1190 x 440 x 497 mm
Further options / accessories: Towel rail anodized aluminium, bathtubs, furniture

Order no. 86096.7 – washbasin with vanity unit, 1 drawer,
86096.8 – washbasin with vanity unit, 1 drawer, 1 interior drawer

TECHNICAL DRAWINGS / S 1 : 20



Pack washbasin with furniture 86196.1



TECHNICAL DATA

Order no.	86196.1 – washbasin with vanity unit
Certified to	Washbasin – EN 31
Dimensions (WxHxD)	600 x 545 x 500 mm
Basin capacity	6.6 litre
Specification	Washbasin: Always to be fixed to the wall. Charge 104 – 1 centre tap hole Furniture: Body/Front – MDF board with PVC foil Integrated handle in the front 2 drawers (soft-close mechanism)
Weight	49,5 kg
Accessories excl.	Feet (2 pieces), aluminium, order no. 48309.2 Towel rail, anodized aluminium, order no. 49095.2
Mounting acc. incl.	Installation set for furniture, order no. 49120.6, 49114.0 Space saving siphon, order no. 89424.0

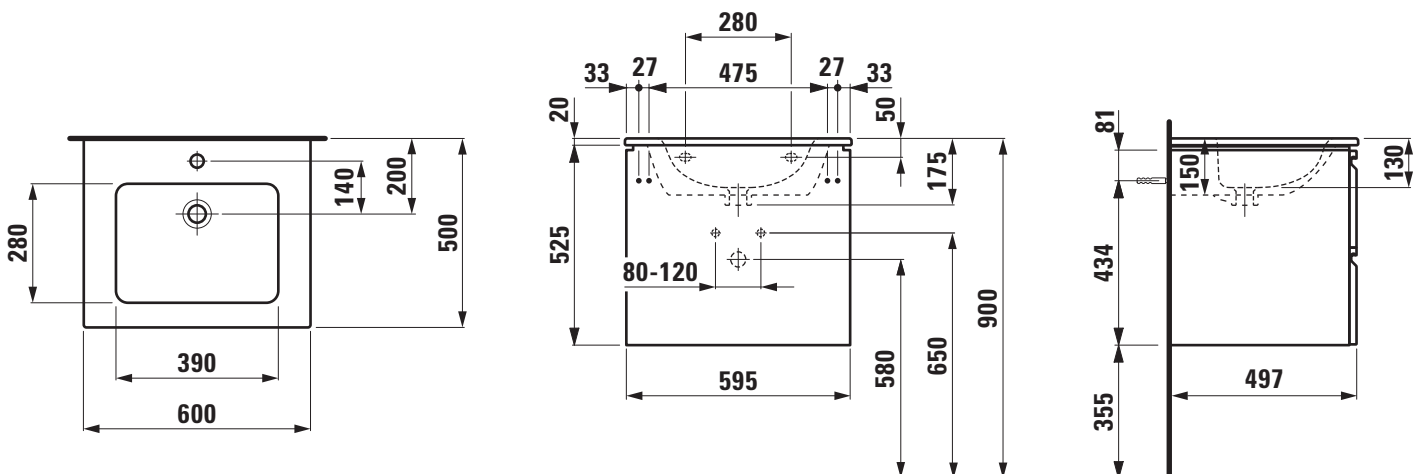
Mounting information	The walls installed on must meet the requirements of the furniture in terms of weight and the supplied fastening elements. If this cannot be guaranteed another method of installation needs to be chosen
----------------------	---

Colours ceramic	000 – White
Colours furniture	463 – White 475 – White glossy 423 – Wenge 479 – Bright oak 480 – Graphite

SPECIFICATION TEXT

Pack washbasin with furniture LAUFEN PRO S
Washbasin: sanitary ceramic, EN 31,
dimensions (WxD) 600 x 500 mm, angular, 1 centre tap hole
Special feature: overflow channel glazed
Vanity unit: Body/Front – MDF board with PVC foil, integrated handles,
2 drawers (soft-close mechanism),
dimensions (WxHxD) 595 x 525 x 497 mm
Further options / accessories: Towel rail anodized aluminium, bathtubs,
furniture
Order no. 86196.1 – washbasin with vanity unit

TECHNICAL DRAWINGS / S 1 : 20



SET LAUFEN PRO S

Pack washbasin with furniture

86196.3



TECHNICAL DATA

Order no.	86196.3 – washbasin with vanity unit
Certified to	Washbasin – EN 31
Dimensions (WxHxD)	800 x 545 x 500 mm
Basin capacity	7.9 litre
Specification	Washbasin: Always to be fixed to the wall. Charge 104 – 1 centre tap hole Furniture: Body/Front – MDF board with PVC foil Integrated handle in the front 2 drawers (soft-close mechanism)
Weight	56,0 kg
Accessories excl.	Feet (2 pieces), aluminium, order no. 48309.2 Towel rail, anodized aluminium, order no. 49095.2
Mounting acc. incl.	Installation set for furniture, order no. 49120.6, 49114.0 Space saving siphon, order no. 89424.0

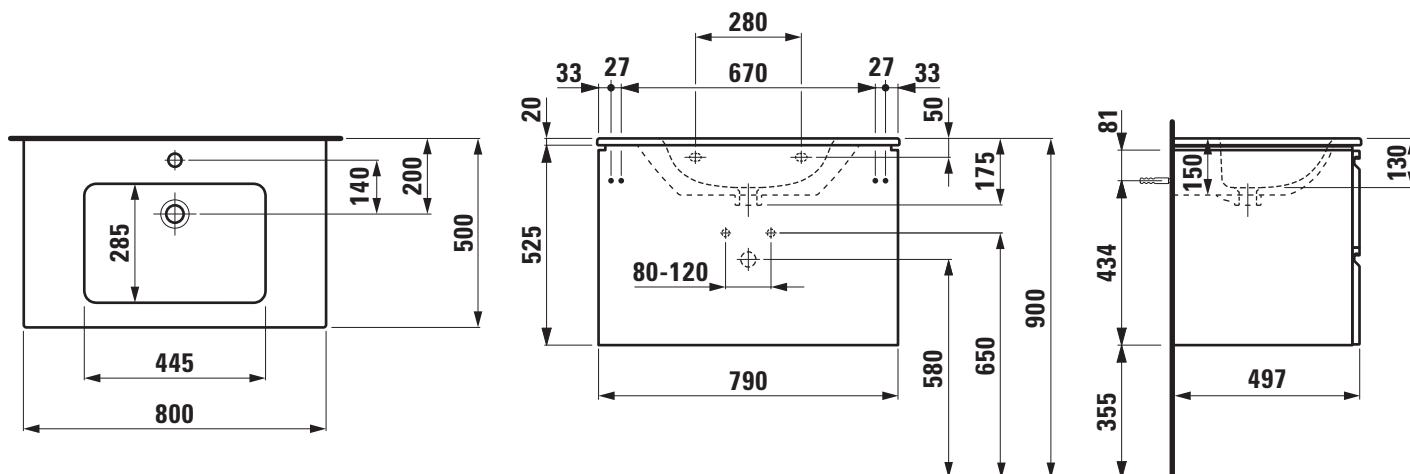
Mounting information The walls installed on must meet the requirements of the furniture in terms of weight and the supplied fastening elements. If this cannot be guaranteed another method of installation needs to be chosen

Colours ceramic	000 – White
Colours furniture	463 – White 475 – White glossy 423 – Wenge 479 – Bright oak 480 – Graphite

SPECIFICATION TEXT

Pack washbasin with furniture LAUFEN PRO S
Washbasin: sanitary ceramic, EN 31,
dimensions (WxD) 800 x 500 mm, angular, 1 centre tap hole
Special feature: overflow channel glazed
Vanity unit: Body/Front – MDF board with PVC foil, integrated handles,
2 drawers (soft-close mechanism),
dimensions (WxHxD) 790 x 525 x 497 mm
Further options / accessories: Towel rail anodized aluminium, bathtubs,
furniture
Order no. 86196.3 – washbasin with vanity unit

TECHNICAL DRAWINGS / S 1 : 20



SET LAUFEN PRO S

Pack washbasin with furniture 86196.5



TECHNICAL DATA

Order no.	86196.5 – washbasin with vanity unit
Certified to	Washbasin – EN 31
Dimensions (WxHxD)	1000 x 545 x 500 mm
Basin capacity	10.5 litre
Specification	Washbasin: Always to be fixed to the wall. Charge 104 – 1 centre tap hole Furniture: Body/Front – MDF board with PVC foil Integrated handle in the front 2 drawers (soft-close mechanism)
Weight	63,0 kg
Accessories excl.	Feet (2 pieces), aluminium, order no. 48309.2 Towel rail, anodized aluminium, order no. 49095.2
Mounting acc. incl.	Installation set for furniture, order no. 49120.6, 49114.0 Space saving siphon, order no. 89424.0
Mounting information	The walls installed on must meet the require-

ments of the furniture in terms of weight and the supplied fastening elements. If this cannot be guaranteed another method of installation needs to be chosen

Colours ceramic	000 – White
Colours furniture	463 – White
	475 – White glossy
	423 – Wenge
	479 – Bright oak
	480 – Graphite

SPECIFICATION TEXT

Pack washbasin with furniture LAUFEN PRO S

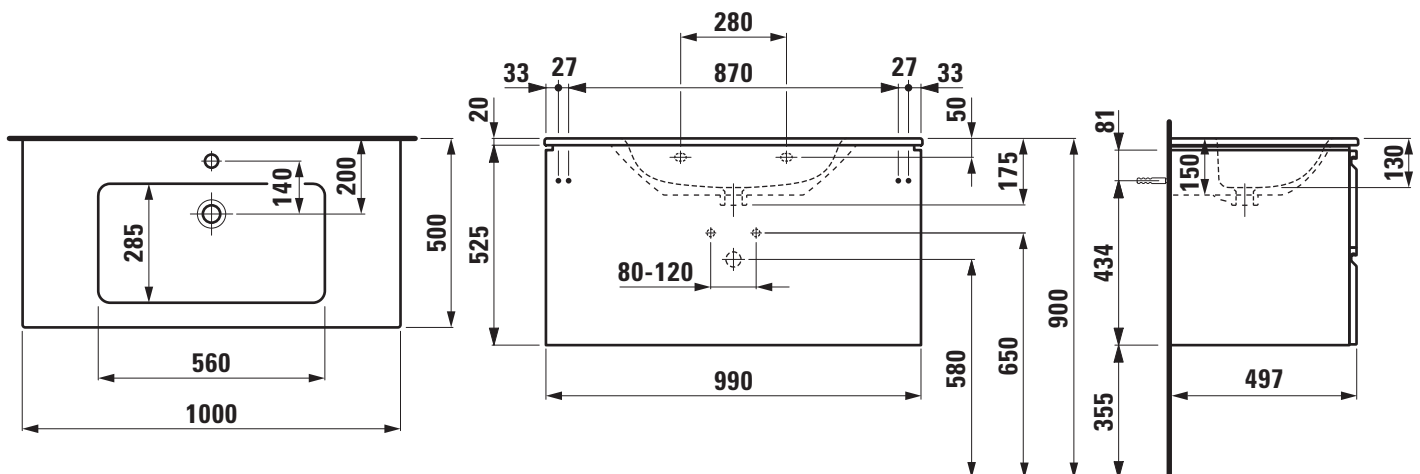
Washbasin: sanitary ceramic, EN 31,
dimensions (WxD) 1000 x 500 mm, angular, 1 centre tap hole
Special feature: overflow channel glazed

Vanity unit: Body/Front – MDF board with PVC foil, integrated handles,
2 drawers (soft-close mechanism),
dimensions (WxHxD) 990 x 525 x 497 mm

Further options / accessories: Towel rail anodized aluminium, bathtubs,
furniture

Order no. 86196.5 – washbasin with vanity unit

TECHNICAL DRAWINGS / S 1 : 20



Pack washbasin with furniture 86196.7



TECHNICAL DATA

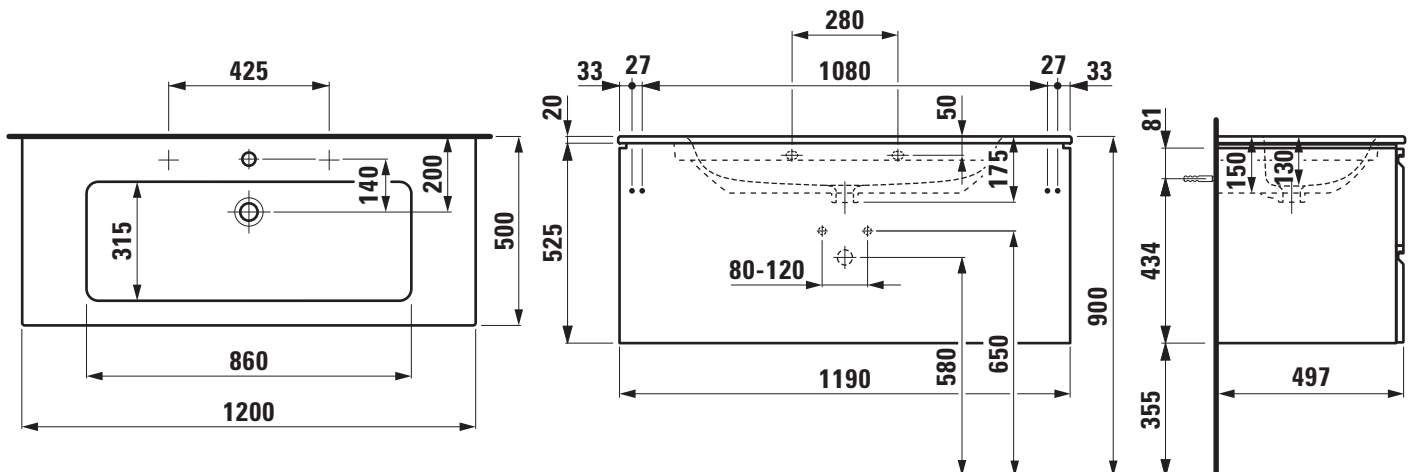
Order no.	86196.7 – washbasin with vanity unit
Certified to	Washbasin – EN 31
Dimensions (WxHxD)	1200 x 545 x 500 mm
IBasin capacity	16.8 litre
Specification	Washbasin: Always to be fixed to the wall. Charge 104 – 1 centre tap hole Charge 107 – 2 tap holes Furniture: Body/Front – MDF board with PVC foil Integrated handle in the front 2 drawers (soft-close mechanism)
Weight	
Accessories excl.	Feet (2 pieces), aluminium, order no. 48309.2 Towel rail, anodized aluminium, order no. 49095.2
Mounting acc. incl.	Installation set for furniture, order no. 49120.6, 49114.0 Space saving siphon, order no. 89424.0

Mounting information	The walls installed on must meet the requirements of the furniture in terms of weight and the supplied fastening elements. If this cannot be guaranteed another method of installation needs to be chosen
Colours ceramic	000 – White
Colours furniture	463 – White 475 – White glossy 423 – Wenge 479 – Bright oak 480 – Graphite

SPECIFICATION TEXT

Pack washbasin with furniture LAUFEN PRO S
Washbasin: sanitary ceramic, EN 31,
dimensions (WxD) 1200 x 500 mm, angular,
Charge 104 – 1 centre tap hole, Charge 107 – 2 tap holes
Special feature: overflow channel glazed
Vanity unit: Body/Front – MDF board with PVC foil, integrated handles,
2 drawers (soft-close mechanism),
dimensions (WxHxD) 1190 x 525 x 497 mm
Further options / accessories: Towel rail anodized aluminium, bathtubs,
furniture
Order no. 86196.7 – washbasin with vanity unit

TECHNICAL DRAWINGS / S 1 : 20





TECHNICAL DATA

Order no.	86496.0 – washbasin with vanity unit
Certified to	Washbasin – EN 31
Dimensions (WxHxD)	600 x 610 x 500 mm
Basin capacity	6.6 litre
Matching cabinets	Base, order no. 40261.x, 40265.x, 40268.x, 40270.x, 40272.x
Specification	<p>Washbasin:</p> <p>Always to be fixed to the wall.</p> <p>Charge 104 – 1 centre tap hole</p> <p>Furniture:</p> <p>White matt: Body MDF with PVC foil (post-forming)</p> <p>Front MDF with PVC foil and ABS edges</p> <p>White glossy: Body MDF with PET foil (post-forming)</p> <p>Front MDF with PET foil and ABS edges</p> <p>Elm light/dark: Body/Front melamine coated particle board with ABS edges</p> <p>2 push and pull full extension drawers (soft-close mechanism)</p>
Weight	42,9 kg
Accessories excl.	<p>Feet (2 pieces), aluminium, order no. 48310.5</p> <p>Towel rail, anodized aluminium, order no. 49095.2</p> <p>Space saving siphon, order no. 89424.1</p>

Mounting acc. incl.	Installation set for furniture, order no. 49114.0, 49301.5
Mounting information	The walls installed on must meet the requirements of the furniture in terms of weight and the supplied fastening elements. If this cannot be guaranteed another method of installation needs to be chosen. For example with feet.
Colours ceramic	000 – White
Colours furniture	<p>260 – White matt</p> <p>261 – White glossy</p> <p>262 – Light elm</p> <p>263 – Dark brown elm</p> <p>999 – 39 other lacquered colours on request</p>

SPECIFICATION TEXT

Pack washbasin with furniture LAUFEN PRO S

Washbasin: sanitary ceramic, EN 31, dimensions (WxD) 600 x 500 mm, angular, 1 centre tap hole

Special feature: overflow channel glazed

Vanity unit: Body – MDF board with PVC foil (white matt), PET foil (white glossy), Melamine coated particle board (elm light/dark), ABS edges

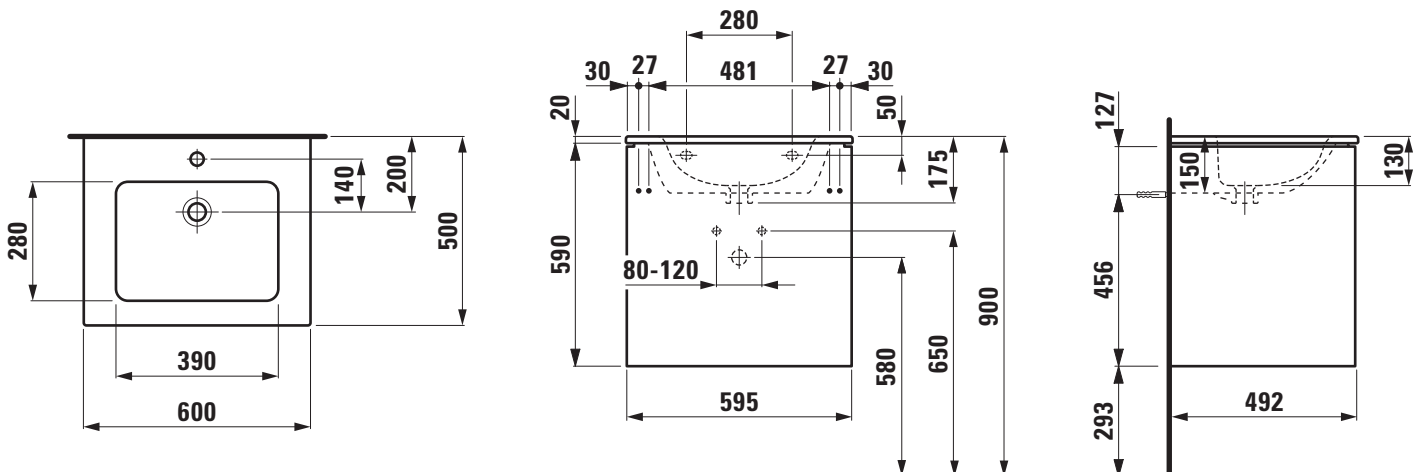
Front – MDF board with PVC foil (white matt), PET foil (white glossy), Melamine coated particle board (elm light/dark), ABS edges

2 push and pull full extension drawers (soft-close mechanism), dimensions (WxHxD) 595 x 590 x 492 mm

Further options / accessories: Towel rail anodized aluminium, space saving siphon, bathtubs, Base furniture

Order no. 86496.0 – washbasin with vanity unit

TECHNICAL DRAWINGS / S 1 : 20





TECHNICAL DATA

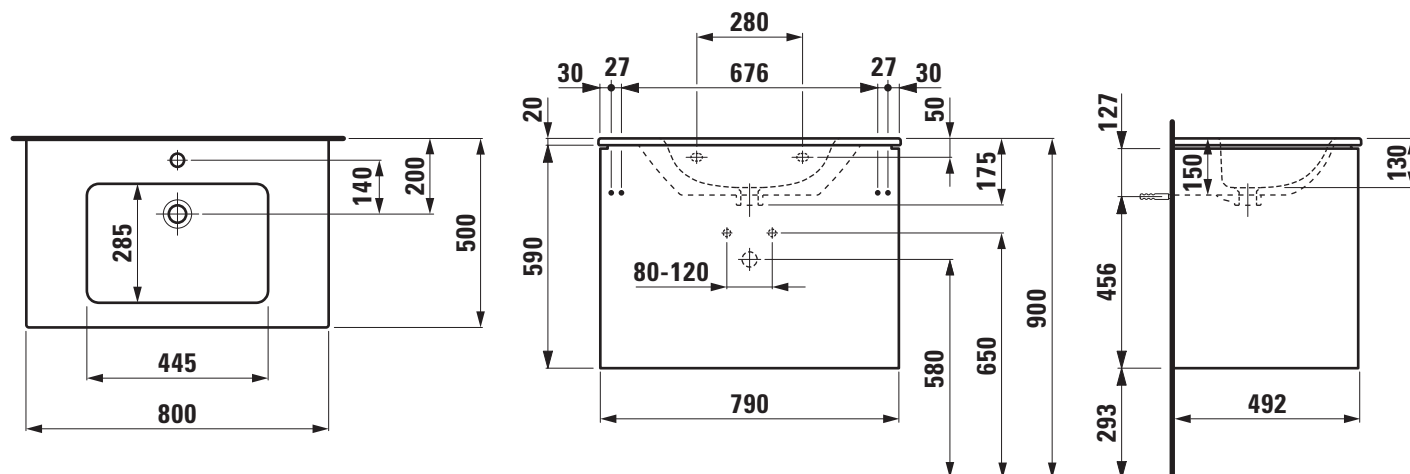
Order no.	86496.1 – washbasin with vanity unit
Certified to	Washbasin – EN 31
Dimensions (WxHxD)	800 x 545 x 500 mm
IBasin capacity	7.9 litre
Matching cabinets	Base, order no. 40261.x, 40265.x, 40268.x, 40270.x, 40272.x
Specification	Washbasin: Always to be fixed to the wall. Charge 104 – 1 centre tap hole Furniture: White matt: Body MDF with PVC foil (post-forming) Front MDF with PVC foil and ABS edges White glossy: Body MDF with PET foil (post-forming) Front MDF with PET foil and ABS edges Elm light/dark: Body/Front melamine coated particle board with ABS edges 2 push and pull full extension drawers (soft-close mechanism)
Weight	51,5 kg
Accessories excl.	Feet (2 pieces), aluminium, order no. 48310.5 Towel rail, anodized aluminium, order no. 49095.2 Space saving siphon, order no. 89424.1

Mounting acc. incl.	Installation set for furniture, order no. 49114.0, 49301.5
Mounting information	The walls installed on must meet the requirements of the furniture in terms of weight and the supplied fastening elements. If this cannot be guaranteed another method of installation needs to be chosen. For example with feet.
Colours ceramic	000 – White
Colours furniture	260 – White matt 261 – White glossy 262 – Light elm 263 – Dark brown elm 999 – 39 other lacquered colours on request

SPECIFICATION TEXT

Pack washbasin with furniture LAUFEN PRO S
Washbasin: sanitary ceramic, EN 31, dimensions (WxD) 800 x 500 mm, angular, 1 centre tap hole
Special feature: overflow channel glazed
Vanity unit: Body – MDF board with PVC foil (white matt), PET foil (white glossy), Melamine coated particle board (elm light/dark), ABS edges
Front – MDF board with PVC foil (white matt), PET foil (white glossy), Melamine coated particle board (elm light/dark), ABS edges
2 push and pull full extension drawers (soft-close mechanism), dimensions (WxHxD) 595 x 590 x 492 mm
Further options / accessories: Towel rail anodized aluminium, space saving siphon, bathtubs, Base furniture
Order no. 86496.1 – washbasin with vanity unit

TECHNICAL DRAWINGS / S 1 : 20





TECHNICAL DATA

Order no.	86496.2 – washbasin with vanity unit	Mounting acc. incl.	Installation set for furniture, order no. 49114.0, 49301.5
Certified to	Washbasin – EN 31	Mounting information	The walls installed on must meet the requirements of the furniture in terms of weight and the supplied fastening elements. If this cannot be guaranteed another method of installation needs to be chosen. For example with feet.
Dimensions (WxHxD)	1000 x 545 x 500 mm	Colours ceramic	000 – White
Basin capacity	10.5 litre	Colours furniture	260 – White matt 261 – White glossy 262 – Light elm 263 – Dark brown elm 999 – 39 other lacquered colours on request
Matching cabinets	Base, order no. 40261.x, 40265.x, 40268.x, 40270.x, 40272.x		
Specification	<p>Washbasin:</p> <p>Always to be fixed to the wall.</p> <p>Charge 104 – 1 centre tap hole</p> <p>Furniture:</p> <p>White matt: Body MDF with PVC foil (post-forming)</p> <p>Front MDF with PVC foil and ABS edges</p> <p>White glossy: Body MDF with PET foil (post-forming)</p> <p>Front MDF with PET foil and ABS edges</p> <p>Elm light/dark: Body/Front melamine coated particle board with ABS edges</p> <p>2 push and pull full extension drawers (soft-close mechanism)</p>		
Weight	59,7 kg		
Accessories excl.	Feet (2 pieces), aluminium, order no. 48310.5 Towel rail, anodized aluminium, order no. 49095.2 Space saving siphon, order no. 89424.1		

SPECIFICATION TEXT

Pack washbasin with furniture LAUFEN PRO S

Washbasin: sanitary ceramic, EN 31, dimensions (WxD) 1000 x 500 mm, angular, 1 centre tap hole

Special feature: overflow channel glazed

Vanity unit: Body – MDF board with PVC foil (white matt), PET foil (white glossy), Melamine coated particle board (elm light/dark), ABS edges

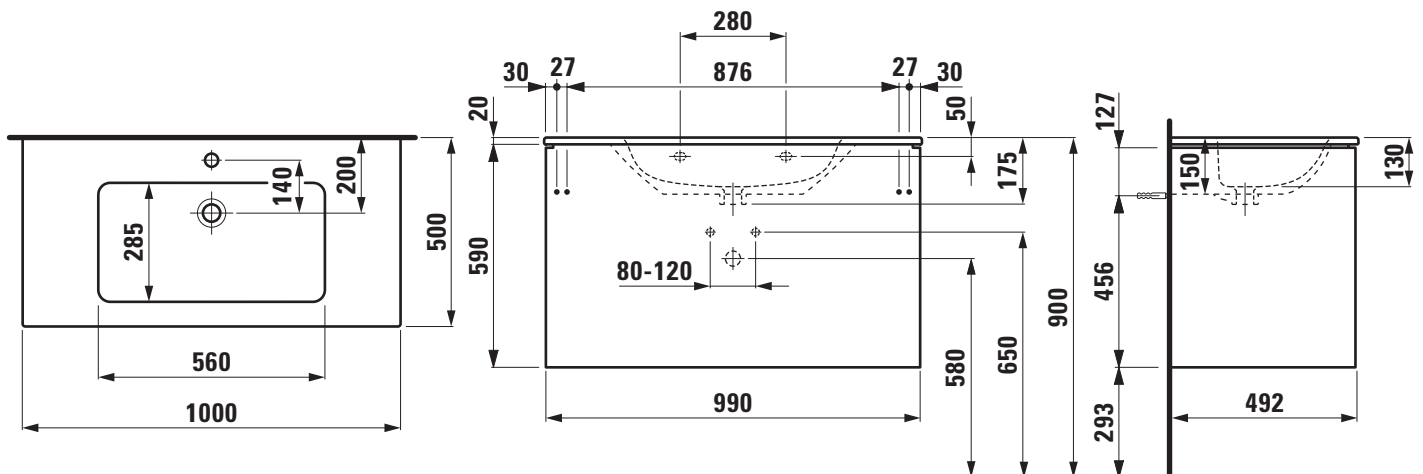
Front – MDF board with PVC foil (white matt), PET foil (white glossy), Melamine coated particle board (elm light/dark), ABS edges

2 push and pull full extension drawers (soft-close mechanism), dimensions (WxHxD) 595 x 590 x 492 mm

Further options / accessories: Towel rail anodized aluminium, space saving siphon, bathtubs, Base furniture

Order no. 86496.2 – washbasin with vanity unit

TECHNICAL DRAWINGS / S 1 : 20





TECHNICAL DATA

Order no.	86496.3 – washbasin with vanity unit
Certified to	Washbasin – EN 31
Dimensions (WxHxD)	1200 x 545 x 500 mm
Basin capacity	16.3 litre
16.8 Matching cabinets	Base, order no. 40261.x, 40265.x, 40268.x, 40270.x, 40272.x
Specification	<p>Washbasin:</p> <p>Always to be fixed to the wall.</p> <p>Charge 104 – 1 centre tap hole</p> <p>Charge 107 – 2 tap holes</p> <p>Furniture:</p> <p>White matt: Body MDF with PVC foil (post-forming)</p> <p>Front MDF with PVC foil and ABS edges</p> <p>White glossy: Body MDF with PET foil (post-forming)</p> <p>Front MDF with PET foil and ABS edges</p> <p>Elm light/dark: Body/Front melamine coated particle board with ABS edges</p> <p>2 push and pull full extension drawers (soft-close mechanism)</p>
Weight	70,5 kg
Accessories excl.	<p>Feet (2 pieces), aluminium, order no. 48310.5</p> <p>Towel rail, anodized aluminium, order no. 49095.2</p> <p>Space saving siphon, order no. 89424.1</p>

Mounting acc. incl.	Installation set for furniture, order no. 49114.0, 49301.5
Mounting information	The walls installed on must meet the requirements of the furniture in terms of weight and the supplied fastening elements. If this cannot be guaranteed another method of installation needs to be chosen. For example with feet.
Colours ceramic	000 – White
Colours furniture	<p>260 – White matt</p> <p>261 – White glossy</p> <p>262 – Light elm</p> <p>263 – Dark brown elm</p> <p>999 – 39 other lacquered colours on request</p>

SPECIFICATION TEXT

Pack washbasin with furniture LAUFEN PRO S

Washbasin: sanitary ceramic, EN 31, dimensions (WxD) 1200 x 500 mm, angular, Charge 104 – 1 centre tap hole, Charge 107 – 2 tap holes

Special feature: overflow channel glazed

Vanity unit: Body – MDF board with PVC foil (white matt), PET foil (white glossy), Melamine coated particle board (elm light/dark), ABS edges

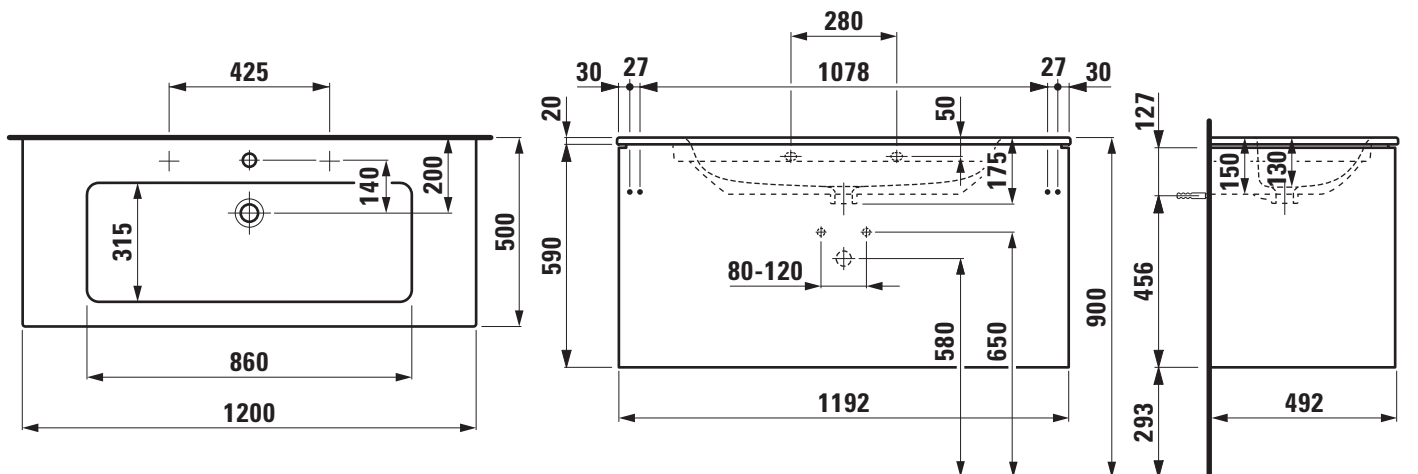
Front – MDF board with PVC foil (white matt), PET foil (white glossy), Melamine coated particle board (elm light/dark), ABS edges

2 push and pull full extension drawers (soft-close mechanism), dimensions (WxHxD) 595 x 590 x 492 mm

Further options / accessories: Towel rail anodized aluminium, space saving siphon, bathtubs, Base furniture

Order no. 86496.3 – washbasin with vanity unit

TECHNICAL DRAWINGS / S 1 : 20



SET LAUFEN PRO S

Built in basin grinded

81196.6



TECHNICAL DATA

Order no.	81196.6
Dimensions	525 x 400 mm
Inside dimensions of the basin	490 x 360 mm
Specification	Charge 104 – 1 centre tap hole
Special specification	Charge 108 – 3 tap holes Charge 109 – without tap hole
Weight	8,0 kg
Mounting acc. incl.	Template, order no. 89790.4 Mounting set, order no. 89296.3
Colours	see colour table

SPECIFICATION TEXT

Built in basin grinded LAUFEN PRO S, sanitary ceramic dimensions 525 x 400 mm, inside dimensions of the basin 490 x 360 mm, angular

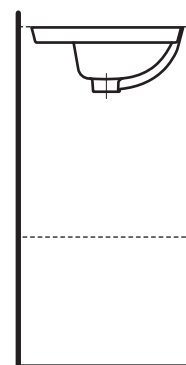
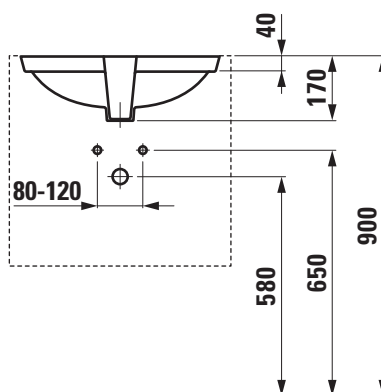
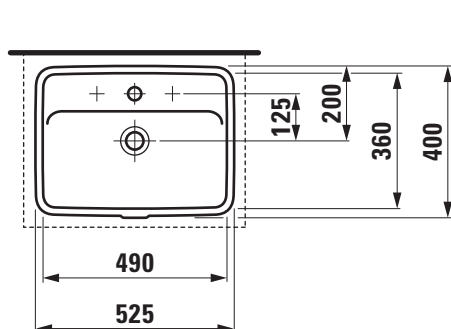
1 centre tap hole, overflow in front

Special feature: overflow channel glazed

Further options / accessories: Surface refinement LCC (only white), 3 tap holes, without tap holes, bathtubs, furniture

Order no. 81196.6

TECHNICAL DRAWINGS / S 1 : 20



SET LAUFEN PRO S

Built in basin not grinded 81196.0



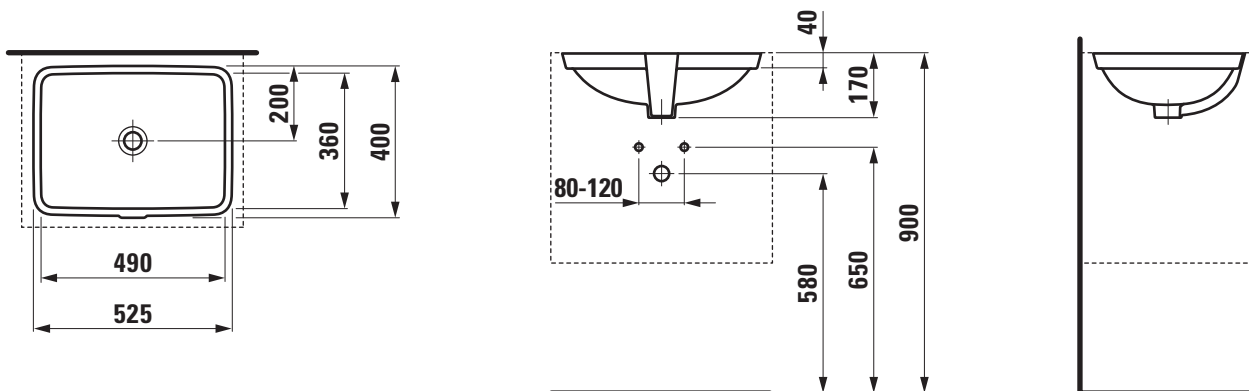
TECHNICAL DATA

Order no.	81196.0
Dimensions	525 x 400 mm
Inside dimensions of the basin	490 x 360 mm
Specification	Charge 109 – without tap hole
Weight	8,0 kg
Mounting acc. incl.	Template, order no. 89790.4 Mounting set, order no. 89296.3
Colours	see colour table

SPECIFICATION TEXT

Built in basin not grinded LAUFEN PRO S, sanitary ceramic dimensions 525 x 400 mm, inside dimensions of the basin 490 x 360 mm, angular
without tap hole, overflow in front
Special feature: overflow channel glazed
Further options / accessories: Surface refinement LCC (only white), bathtubs, furniture
Order no. 81196.0

TECHNICAL DRAWINGS / S 1 : 20



SET LAUFEN PRO S

Built in basin grinded 81196.1



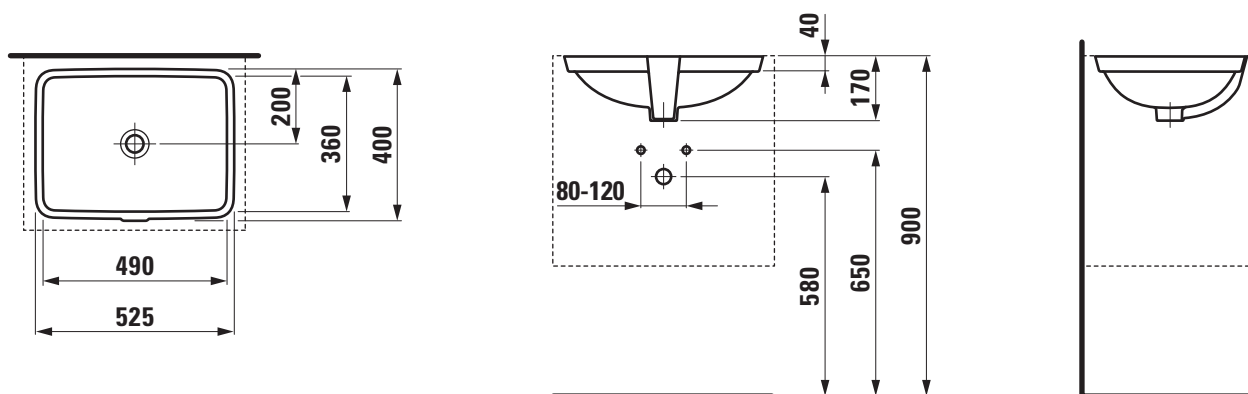
TECHNICAL DATA

Order no.	81196.1
Dimensions	525 x 400 mm
Inside dimensions of the basin	490 x 360 mm
Specification	Charge 109 – without tap hole
Weight	8,0 kg
Mounting acc. incl.	Template, order no. 89790.4 Mounting set, order no. 89296.3
Colours	see colour table

SPECIFICATION TEXT

Built in basin grinded LAUFEN PRO S, sanitary ceramic dimensions 525 x 400 mm, inside dimensions of the basin 490 x 360 mm, angular
without tap hole, overflow in front
Special feature: overflow channel glazed
Further options / accessories: Surface refinement LCC (only white), bathtubs, furniture
Order no. 81196.1

TECHNICAL DRAWINGS / S 1 : 20



SET LAUFEN PRO S

Built in basin not grinded

81196.3



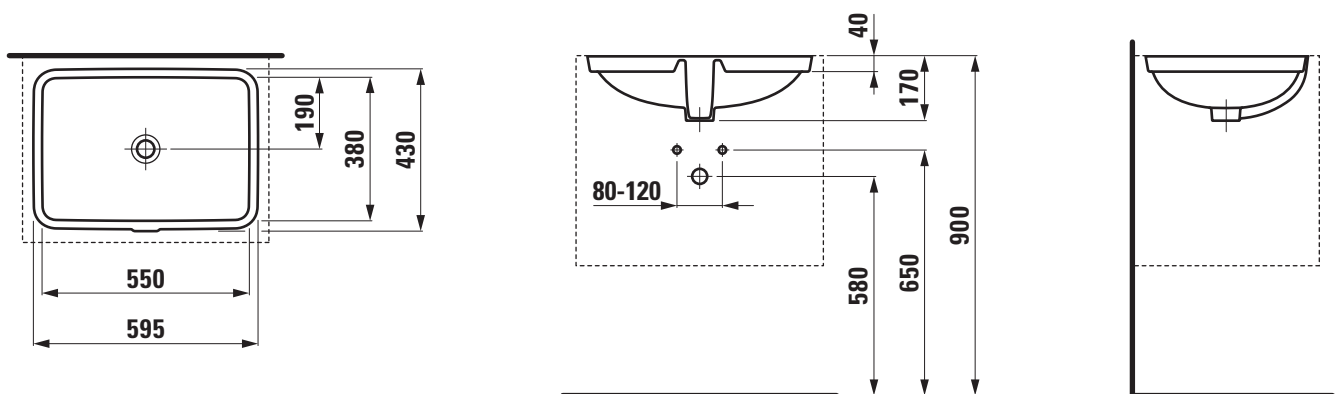
TECHNICAL DATA

Order no.	81196.3
Certified to	EN 31
Dimensions	595 x 430 mm
Inside dimensions of the basin	550 x 380 mm
Specification	Charge 109 – without tap hole
Weight	9,0 kg
Mounting acc. incl.	Template, order no. 89790.6 Mounting set, order no. 89296.3
Colours	see colour table

SPECIFICATION TEXT

Built in basin not grinded LAUFEN PRO S, sanitary ceramic EN 31
 dimensions 595 x 430 mm, inside dimensions of the basin 550 x 380 mm, angular
 without tap hole, overflow in front
 Special feature: overflow channel glazed
 Further options / accessories: Surface refinement LCC (only white), bathtubs, furniture
 Order no. 81196.3

TECHNICAL DRAWINGS / S 1 : 20



SET LAUFEN PRO S

Built in basin grinded

81196.8



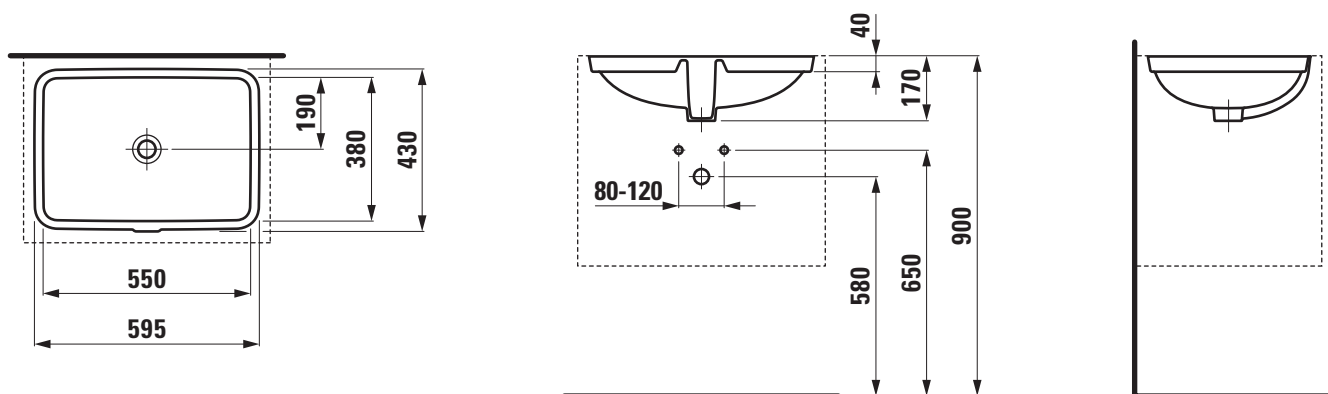
TECHNICAL DATA

Order no.	81196.8
Certified to	EN 31
Dimensions	595 x 430 mm
Inside dimensions of the basin	550 x 380 mm
Specification	Charge 109 – without tap hole
Weight	9,0 kg
Mounting acc. incl.	Template, order no. 89790.6 Mounting set, order no. 89296.3
Colours	see colour table

SPECIFICATION TEXT

Built in basin grinded LAUFEN PRO S, sanitary ceramic
EN 31
dimensions 595 x 430 mm, inside dimensions of the basin 550 x 380 mm, angular
without tap hole, overflow in front
Special feature: overflow channel glazed
Further options / accessories: Surface refinement LCC (only white), bathtubs, furniture
Order no. 81196.8

TECHNICAL DRAWINGS / S 1 : 20



SET LAUFEN PRO S

Built in basin not grinded

81196.5



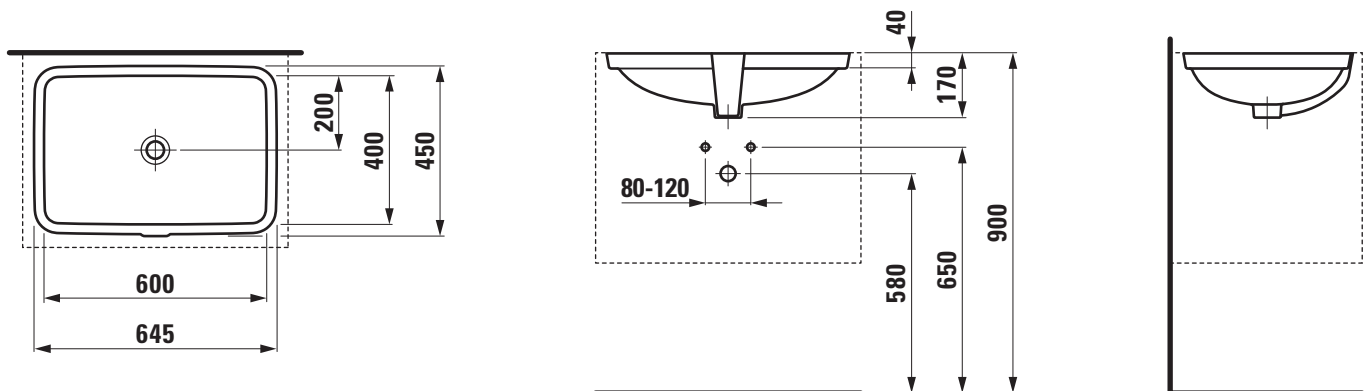
TECHNICAL DATA

Order no.	81196.5
Certified to	EN 31
Dimensions	645 x 450 mm
Inside dimensions of the basin	600 x 400 mm
Specification	Charge 109 – without tap hole
Weight	9,5 kg
Mounting acc. incl.	Template, order no. 89790.5 Mounting set, order no. 89296.3
Colours	see colour table

SPECIFICATION TEXT

Built in basin not grinded LAUFEN PRO S, sanitary ceramic EN 31
 dimensions 645 x 450 mm, inside dimensions of the basin 600 x 400 mm, angular
 without tap hole, overflow in front
 Special feature: overflow channel glazed
 Further options / accessories: Surface refinement LCC (only white), bathtubs, furniture
 Order no. 81196.5

TECHNICAL DRAWINGS / S 1 : 20



SET LAUFEN PRO S

Built in basin grinded 81196.9



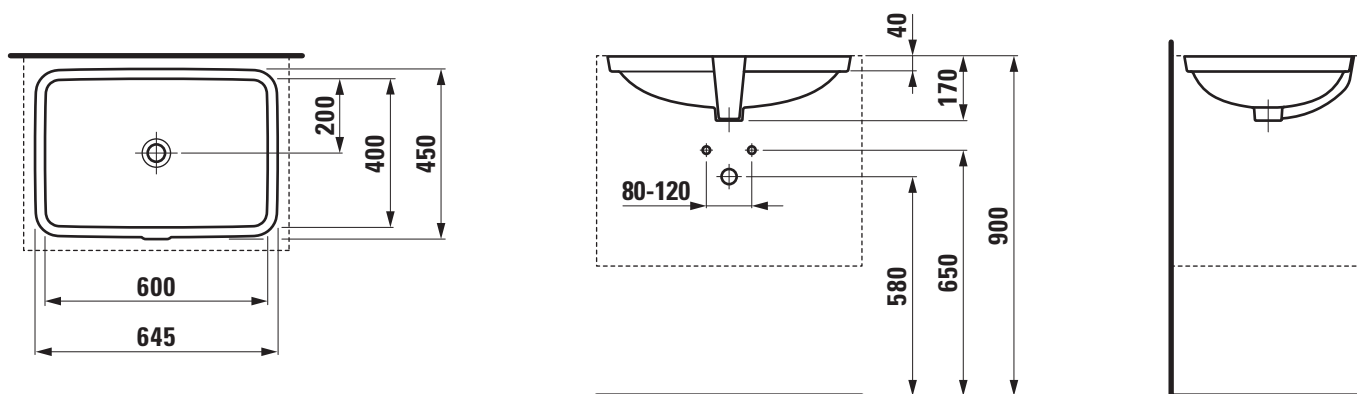
TECHNICAL DATA

Order no.	81196.9
Certified to	EN 31
Dimensions	645 x 450 mm
Inside dimensions of the basin	600 x 400 mm
Specification	Charge 109 – without tap hole
Weight	9,5 kg
Mounting acc. incl.	Template, order no. 89790.5 Mounting set, order no. 89296.3
Colours	see colour table

SPECIFICATION TEXT

Built in basin grinded LAUFEN PRO S, sanitary ceramic
EN 31
dimensions 645 x 450 mm, inside dimensions of the basin 600 x 400 mm, angular
without tap hole, overflow in front
Special feature: overflow channel glazed
Further options / accessories: Surface refinement LCC (only white), bathtubs, furniture
Order no. 81196.9

TECHNICAL DRAWINGS / S 1 : 20



SET LAUFEN PRO S

Drop in basin 81896.3



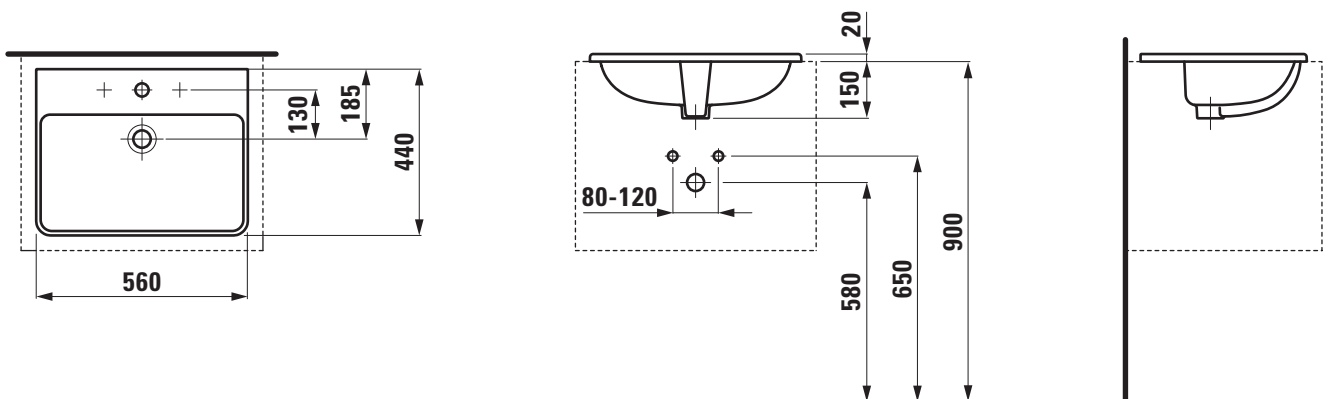
TECHNICAL DATA

Order no.	81896.3
Dimensions	560 x 440 mm
Inside dimensions of the basin	470 x 275 mm
matching for	Washtop Case
Specification	Charge 104 – 1 centre tap hole
Special specification	Charge 108 – 3 tap holes Charge 109 – without tap hole Charge 136 – 3 tap holes, distance 8 inches
Weight	9,0 kg
Mounting acc. incl.	Template, order no. 89996.7
Mounting acc. excl.	Silicon caoutchouc Siphon D40 chrome, order no. 89397.9
Colours	see colour table

SPECIFICATION TEXT

Drop in basin LAUFEN PRO S, sanitary ceramic dimensions 560 x 440 mm, angular
1 centre tap hole, overflow in front
Special feature: overflow channel glazed
Further options / accessories: Surface refinement LCC (only white), 3 tap holes, without tap holes, 3 tap holes distance 8 inches, bathtubs, furniture, washtops Case
Order no. 81896.3

TECHNICAL DRAWINGS / S 1 : 20



Washbasin bowl Compact undersurface ground
81295.2



TECHNICAL DATA

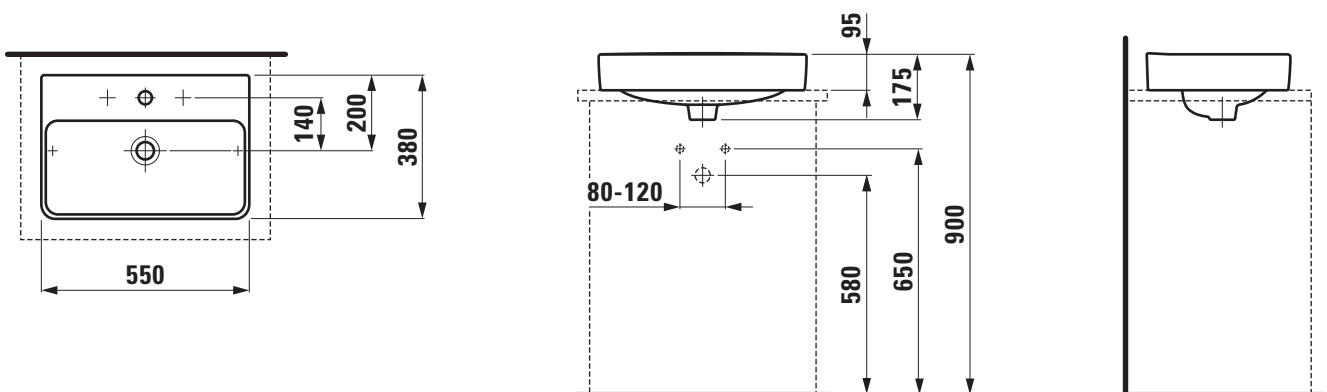
Order no.	81295.2
Certified to	EN 31
Dimensions	550 x 380 mm
Inside dimensions of the basin	500 x 225 mm
matching for	Washtop Case and Space
Specification	Charge 104 – 1 centre tap hole
Special specification	Charge 108 – 3 tap holes Charge 109 – without tap hole Charge 142 – without tap hole, without overflow and without open drain Charge 156 – 1 centre tap hole, without overflow and without open drain
Weight	12,0
Mounting acc. incl.	Template, order no. 89896.1 Fastening kit, order no. 89194.0

Mounting acc. excl.	Siphon D40 chrome, order no. 89397.9
Colours	see colour table

SPECIFICATION TEXT

Compact washbasin bowl undersurface ground LAUFEN PRO S, sanitary ceramic
EN 31
dimensions 550 x 380 mm, angular
1 centre tap hole
Special feature: overflow channel glazed
Further options / accessories: Surface refinement LCC (only white), 3 tap holes, without tap holes, without tap holes/overflow and open drain, 1 tap hole/without overflow and open drain, bathtubs, furniture, washtops Case and Space
Order no. 81295.2

TECHNICAL DRAWINGS / S 1 : 20



Washbasin bowl Compact undersurface ground
81295.3



TECHNICAL DATA

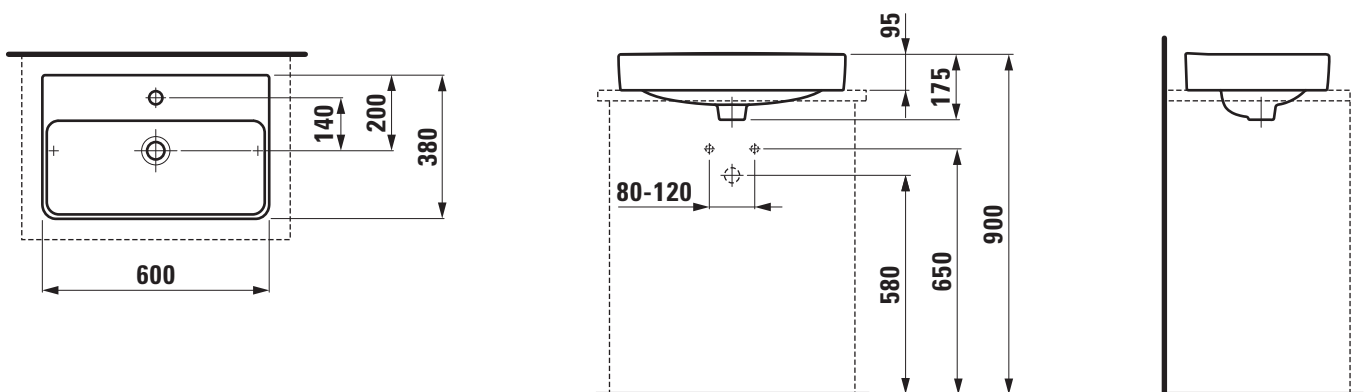
Order no.	81295.3
Certified to	EN 31
Dimensions	600 x 380 mm
Inside dimensions of the basin	540 x 225 mm
matching for	Washtop Case and Space
Specification	Charge 104 – 1 centre tap hole
Special specification	Charge 109 – without tap hole Charge 142 – without tap hole, without overflow and without open drain Charge 156 – 1 centre tap hole, without overflow and without open drain
Weight	12,0 kg
Mounting acc. incl.	Template, order no. 89896.2 Fastening kit, order no. 89194.0
Mounting acc. excl.	Siphon D40 chrome, order no. 89397.9

Colours see colour table

SPECIFICATION TEXT

Compact washbasin bowl undersurface ground LAUFEN PRO S, sanitary ceramic
EN 31
dimensions 600 x 380 mm, angular
1 centre tap hole
Special feature: overflow channel glazed
Further options / accessories: Surface refinement LCC (only white), without tap holes, without tap holes/overflow and open drain, 1 tap hole/without overflow and open drain, bathtubs, furniture, washtops Case and Space
Order no. 81295.3

TECHNICAL DRAWINGS / S 1 : 20



SET LAUFEN PRO S

Washbasin bowl

81695.2



TECHNICAL DATA

Order no.	81695.2
Certified to	EN 31
Dimensions	600 x 400 mm
Inside dimensions of the basin	500 x 300 mm
matching for	Washtop Case and Space
Specification	Charge 112 – without tap hole without overflow
Weight	14,5 kg
Mounting acc. incl.	Template, order no. 89295.3 Fastening kit, order no. 89194.0
Mounting acc. excl.	valve without overflow always open, order no. 89543.9 Siphon D40 chrome, order no. 89397.9
Colours	see colour table

SPECIFICATION TEXT

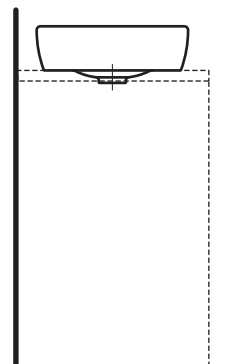
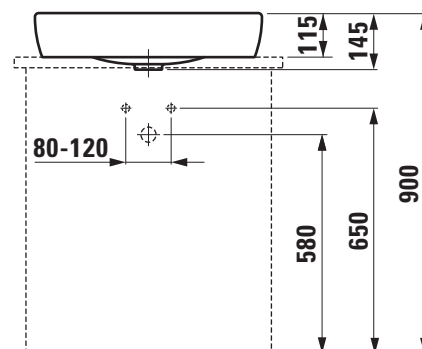
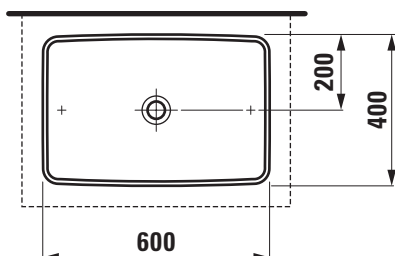
Washbasin bowl LAUFEN PRO S, sanitary ceramic
EN 31

dimensions 600 x 400 mm, angular
without tap hole and overflow

Further options / accessories: Surface refinement LCC (only white),
bathtubs, furniture, washtops Case and Space

Order no. 81695.2

TECHNICAL DRAWINGS / S 1 : 20



SET LAUFEN PRO S

Small washbasin

81596.0



TECHNICAL DATA

Order no.	81596.0
Certified to	EN 31
Dimensions	360 x 250 mm
Specification	Charge 104 – 1 tap hole right
Special specification	Charge 109 – without tap hole
Weight	6,0 kg
Mounting acc. excl.	Mounting set M10 x 140 mm, order no. 89988.2
Colours	see colour table

SPECIFICATION TEXT

Small washbasin LAUFEN PRO S, sanitary ceramic
EN 31

dimensions 360 x 250 mm, angular

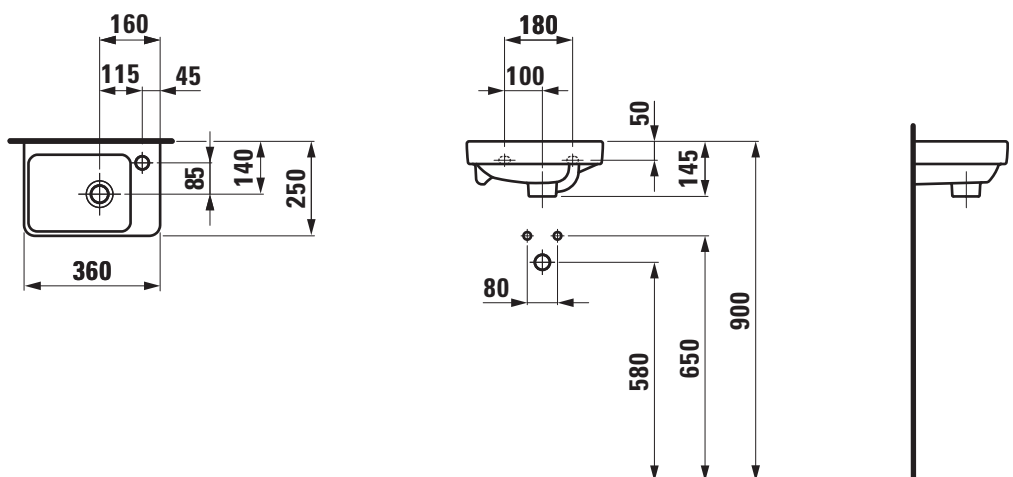
1 tap hole right

Special feature: overflow channel glazed

Further options / accessories: Surface refinement LCC (only white), without
tap hole

Order no. 81596.0

TECHNICAL DRAWINGS / S 1 : 20



SET LAUFEN PRO S

Small washbasin

81596.1



TECHNICAL DATA

Order no.	81596.1
Certified to	EN 31
Dimensions	450 x 340 mm
Inside dimensions of the basin	415 x 208 mm
Specification	Charge 104 – 1 centre tap hole
Special specification	Charge 109 – without tap holes, with overflow Charge 142 – without tap hole, without overflow and without open drain Charge 156 – 1 centre tap hole, without overflow and without open drain
Weight	9,5 kg
Accessories excl.	Siphon cover, order no. 81996.4
Mounting acc. excl.	Mounting set M10 x 140 mm, order no. 89988.2
Colours	see colour table

SPECIFICATION TEXT

Small washbasin LAUFEN PRO S, sanitary ceramic EN 31

dimensions 450 x 340 mm, angular

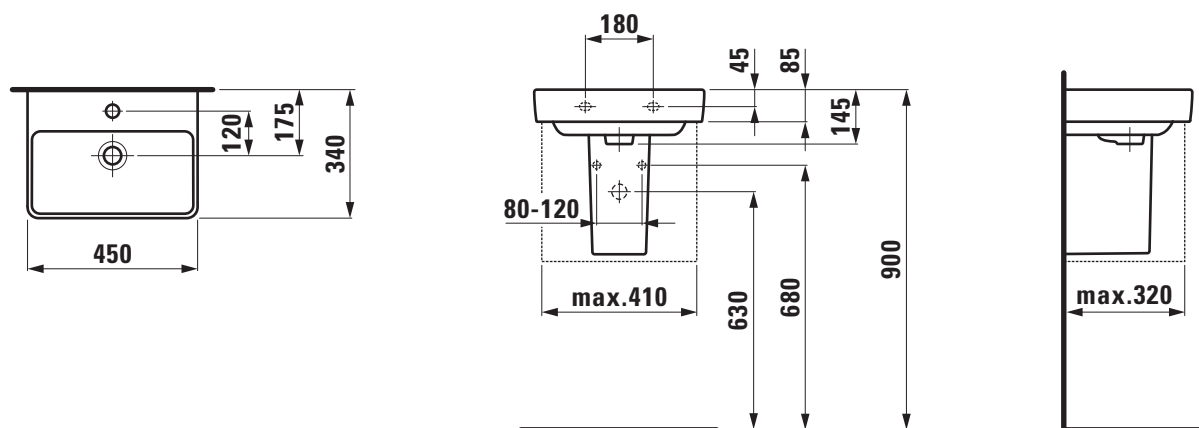
1 centre tap hole

Special feature: overflow channel glazed

Further options / accessories: Surface refinement LCC (only white), without tap hole, without tap hole/overflow and open drain, 1 tap hole/without overflow and open drain, siphon cover, furniture

Order no. 81596.1

TECHNICAL DRAWINGS / S 1 : 20



SET LAUFEN PRO S

Siphon cover

81996.4



TECHNICAL DATA

Order no.	81996.4
matching for	Small wash basin, order no. 81596.1
Weight	
Mounting acc. incl.	Device for fixing, order no. 89001.5
Colours	see colour table

SPECIFICATION TEXT

Siphon cover LAUFEN PRO S, sanitary ceramic
matching small washbasin order no. 81596.1
Order no. 81996.4

SET LAUFEN PRO S

Countertop small washbasin

81595.4



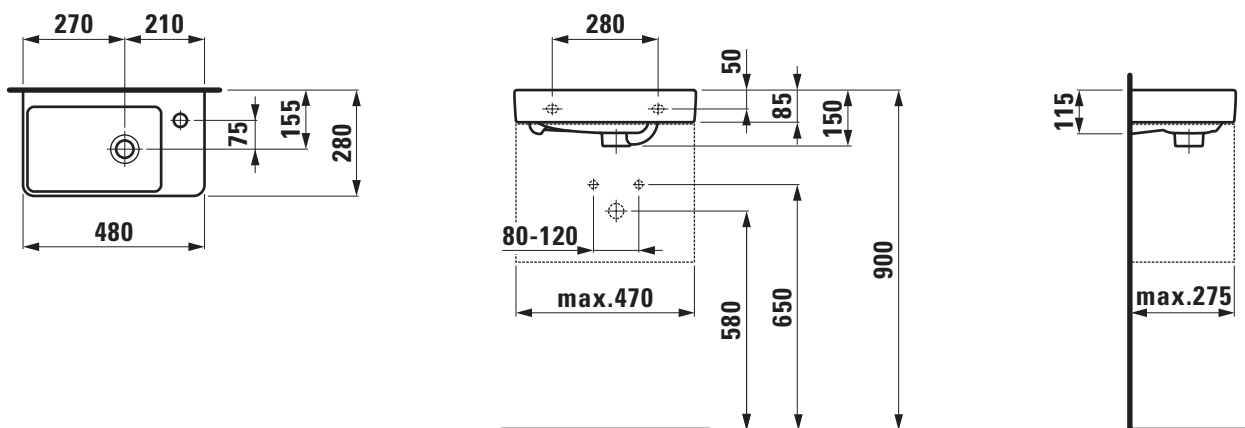
TECHNICAL DATA

Order no.	81595.4
Certified to	EN 31
Dimensions	480 x 280 mm
Inside dimensions of the basin	355 x 225 mm
Specification	Charge 104 – 1 tap hole right
Special specification	Charge 109 – without tap hole
Weight	8,5 kg
Mounting acc. excl.	Mounting set M10 x 140 mm, order no. 89988.2
Colours	see colour table

SPECIFICATION TEXT

Countertop small washbasin LAUFEN PRO S, sanitary ceramic EN 31
 dimensions 480 x 280 mm, angular
 1 tap hole right
 Special feature: overflow channel glazed
 Further options / accessories: Surface refinement LCC (only white), without tap hole, furniture
 Order no. 81595.4

TECHNICAL DRAWINGS / S 1 : 20



SET LAUFEN PRO S

Countertop small washbasin

81595.5



TECHNICAL DATA

Order no.	81595.5
Certified to	EN 31
Dimensions	480 x 280 mm
Inside dimensions of the basin	355 x 225 mm
Specification	Charge 104 – 1 tap hole left
Special specification	Charge 109 – without tap hole
Weight	8,5 kg
Mounting acc. excl.	Mounting set M10 x 140 mm, order no. 89988.2
Colours	see colour table

SPECIFICATION TEXT

Countertop small washbasin LAUFEN PRO S, sanitary ceramic EN 31

dimensions 480 x 280 mm, angular

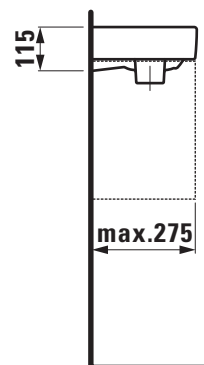
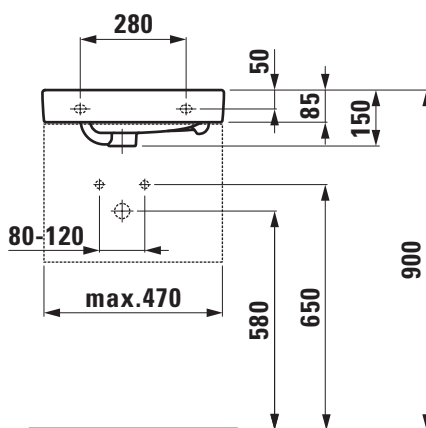
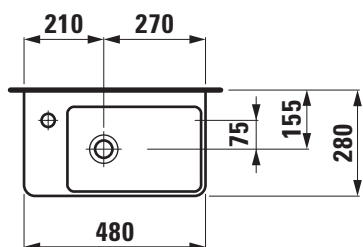
1 tap hole left

Special feature: overflow channel glazed

Further options / accessories: Surface refinement LCC (only white), without tap hole, furniture

Order no. 81595.5

TECHNICAL DRAWINGS / S 1 : 20



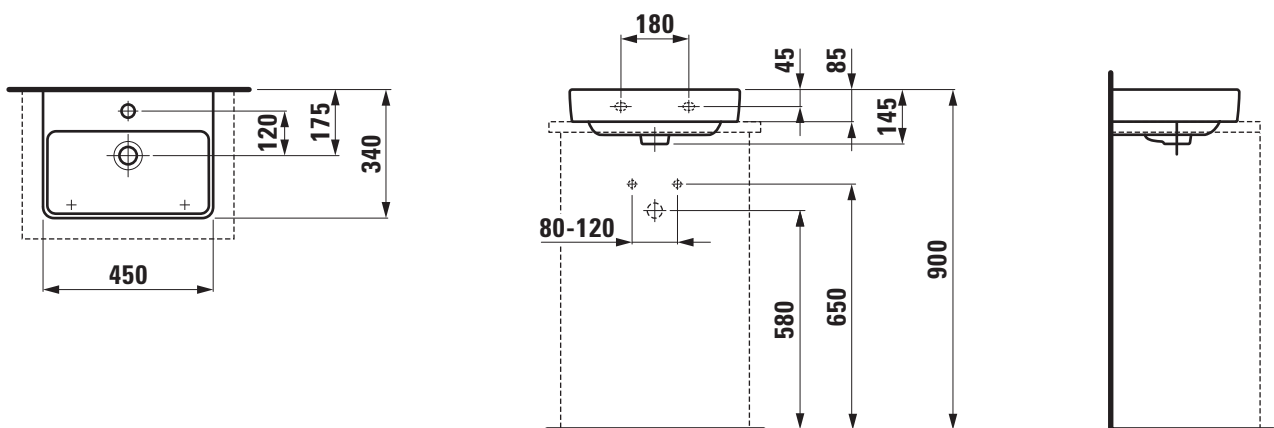
**Small washbasin undersurface ground
81696.1**



TECHNICAL DATA

Order no.	81696.1	Mounting acc. incl.	Template, order no. 89696.2
Certified to	EN 31		Fastening kit, order no. 89194.0
Dimensions	450 x 340 mm	Mounting acc. excl.	Mounting set M10 x 140 mm, order no. 89988.2
Inside dimensions of the basin	415 x 208 mm	Colours	see colour table
matching for	Washtop Case	SPECIFICATION TEXT	
Specification	Always to be fixed to the wall. Undersurface ground Charge 104 – 1 centre tap hole	Small washbasin undersurface ground LAUFEN PRO S, sanitary ceramic	
Special specification	Charge 109 – without tap holes, with overflow Charge 142 – without tap hole, without overflow and without open drain Charge 156 – 1 centre tap hole, without overflow and without open drain	EN 31 dimensions 450 x 340 mm, angular 1 centre tap hole Special feature: overflow channel glazed	
Weight	9,5 kg	Further options / accessories: Surface refinement LCC (only white), without tap hole, without tap hole/overflow and open drain, 1 tap hole/without overflow and open drain, furniture, washtops Case Order no. 81696.1	

TECHNICAL DRAWINGS / S 1 : 20



SET LAUFEN PRO S

Wallhung WC pan 82096.1



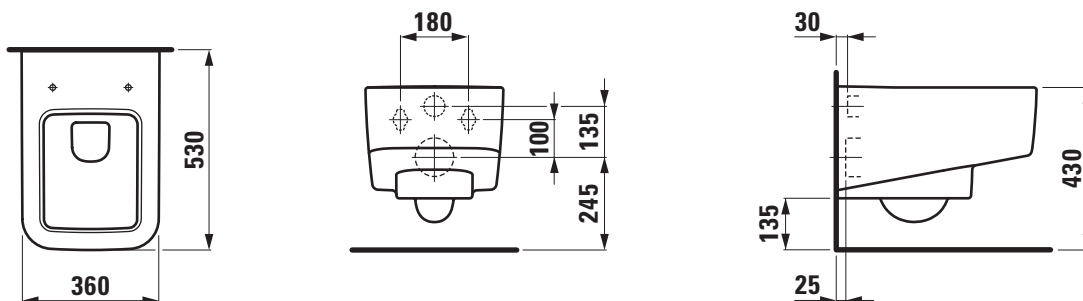
TECHNICAL DATA

Order no.	82096.1
Certified to	EN 997, EN 33
Specification	Washdown for 4,5/3-l-flush
Weight	25,0 kg
Accessories excl.	Seat and cover, order no. 89196.0 Seat and cover with automatic lowering system, order no. 89196.1
Mounting acc. incl.	laufen EasyFit system M12, order no. 89282.7
Mounting acc. excl.	Stone screw fastening kit M12
Colours	see colour table

SPECIFICATION TEXT

Wallhung WC pan washdown LAUFEN PRO S, sanitary ceramic, for concealed cistern
EN 997, EN 33, 4,5/3-l-flush, dimensions 360 x 530 x 340 mm
concealed trap, concealed fixation
Special feature: water rim closed, concealed surfaces directing water are fully glazed throughout, vacuum checked
Further options / accessories: Surface refinement LCC (only white), WC seat and cover, 89196.0, WC seat and cover with automatic lowering 89196.1
Order no. 82096.1

TECHNICAL DRAWINGS / S 1 : 20



SET LAUFEN PRO S

Wallhung WC rimless

82096.2



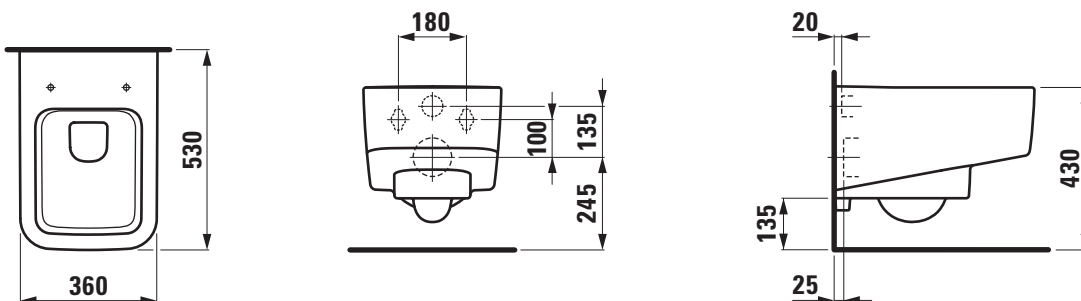
TECHNICAL DATA

Order no.	82096.2
Certified to	EN 997, EN 33
Specification	rimless Washdown for 4,5/3-l-flush
Weight	20,0 kg
Accessories excl.	Seat and cover, order no. 89196.0 Seat and cover with automatic lowering system, order no. 89196.1
Mounting acc. incl.	laufen EasyFit system M12, order no. 89282.7
Mounting acc. excl.	Stone screw fastening kit M12
Colours	see colour table

SPECIFICATION TEXT

Wallhung WC rimless washdown LAUFEN PRO S, sanitary ceramic, for concealed cistern
EN 997, EN 33, 4,5/3-l-flush, dimensions 360 x 530 x 340 mm
concealed trap, concealed fixation
Special feature: rimless, concealed surfaces directing water are fully glazed throughout, vacuum checked
Further options / accessories: Surface refinement LCC (only white), WC seat and cover, 89196.0, WC seat and cover with automatic lowering 89196.1
Order no. 82096.2

TECHNICAL DRAWINGS / S 1 : 20



SET LAUFEN PRO S

Seat and cover

89196.0



TECHNICAL DATA

Order no.	89196.0
matching for	Wallhung WC pan, order no. 82096.1, 82096.2
Specification	removable
Weight	2,5 kg
Mounting acc.	included
Colours	see colour table

SPECIFICATION TEXT

WC seat and cover LAUFEN PRO S, Duroplast
removable

matching wallhung WC pan, order no. 82096.1, 82096.2
Order no. 89196.0

SET LAUFEN PRO S

Seat and cover with automatic lowering system

89196.1



TECHNICAL DATA

Order no.	89196.1
matching for	Wallhung WC pan, order no. 82096.1, 82096.2
Specification	removable with automatic lowering system
Weight	2,5 kg
Mounting acc.	included
Colours	see colour table

SPECIFICATION TEXT

WC seat and cover LAUFEN PRO S, Duroplast
removable, automatic lowering system
matching wallhung WC pan, order no. 82096.1, 82096.2
Order no. 89196.1

SET LAUFEN PRO S

Wallhung bidet

83096.1



TECHNICAL DATA

Order no.	83096.1
Specification	Charge 302 – 1 centre tap hole without lateral holes Installation available with internal or external corner valves.
Weight	17,0 kg
Mounting acc. incl.	laufen EasyFit system M12, order no. 89282.7
Mounting acc. excl.	Stone screw fastening kit M12
Colours	see colour table

SPECIFICATION TEXT

Wallhung bidet LAUFEN PRO S, sanitary ceramic
dimensions 360 x 530 x 295 mm

1 centre tap hole

concealed trap, concealed fixation

Special feature: overflow channel glazed, vacuum checked, installation
available with internal or external corner valves

Further options: Surface refinement LCC (only white)

Order no. 83096.1

TECHNICAL DRAWINGS / S 1 : 20

