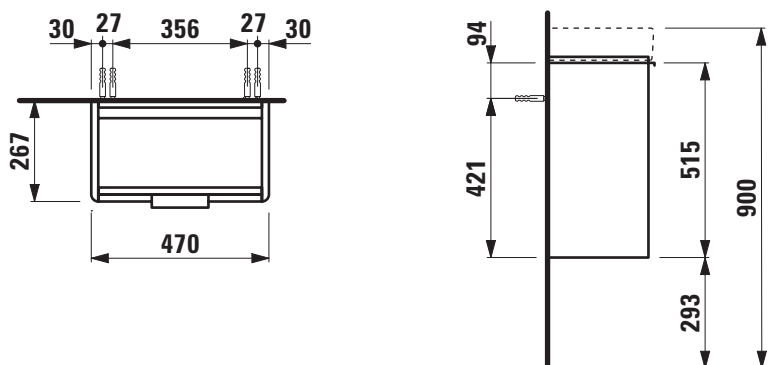




TECHNICAL DATA

Order no.	40210.1 / door hinge left	Accessories excl.	Feet (2 pieces), anodized aluminium, order no. 40299.2
Dimensions (WxHxD)	470 x 515 x 267 mm		Space saving siphon, order no. 89424.1
Matching for	Washbasin, order no. 81595.5	Mounting acc. incl.	Installation set for furniture, order no. 49114.0, 49301.5
Specification	<p>Body/Front</p> <p>White matt: Body MDF with PVC foil (post-forming) Front MDF with PVC foil and ABS edges</p> <p>White glossy: Body MDF with PET foil (post-forming) Front MDF with PET foil and ABS edges</p> <p>Elm light/dark: Body particle board with CPL foil Front melamine coated particle board with ABS edges</p> <p>anodized aluminium handle bar on the top 1 door (soft-close mechanism) 1 internal glass shelf</p>	Mounting information	The walls installed on must meet the requirements of the furniture in terms of weight and the supplied fastening elements. If this cannot be guaranteed another method of installation needs to be chosen. For example with feet.
		Colours	<p>260 – White matt</p> <p>261 – White glossy</p> <p>262 – Light elm</p> <p>263 – Dark brown elm</p> <p>999 – 39 other lacquered colours on request</p>
Weight	11,0 kg		

TECHNICAL DRAWINGS / S 1 : 20



BASE FURNITURE FOR LAUFEN PRO S

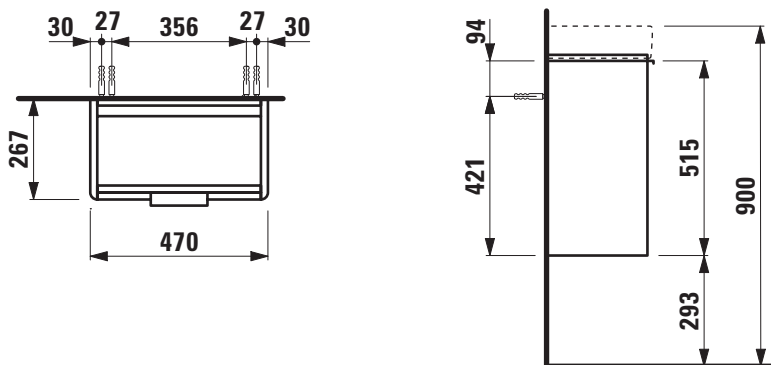
Vanity unit 40210.2



TECHNICAL DATA

Order no.	40210.2 / door hinge right	Accessories excl.	Feet (2 pieces), anodized aluminium, order no. 40299.2
Dimensions (WxHxD)	470 x 515 x 267 mm		Space saving siphon, order no. 89424.1
Matching for	Washbasin, order no. 81595.4	Mounting acc. incl.	Installation set for furniture, order no. 49114.0, 49301.5
Specification	Body/Front White matt: Body MDF with PVC foil (post-forming) Front MDF with PVC foil and ABS edges White glossy: Body MDF with PET foil (post-forming) Front MDF with PET foil and ABS edges Elm light/dark: Body particle board with CPL foil Front melamine coated particle board with ABS edges anodized aluminium handle bar on the top 1 door (soft-close mechanism) 1 internal glass shelf	Mounting information	The walls installed on must meet the requirements of the furniture in terms of weight and the supplied fastening elements. If this cannot be guaranteed another method of installation needs to be chosen. For example with feet.
Weight	11,0 kg	Colours	260 – White matt 261 – White glossy 262 – Light elm 263 – Dark brown elm 999 – 39 other lacquered colours on request

TECHNICAL DRAWINGS / S 1 : 20



BASE FURNITURE FOR LAUFEN PRO S

Vanity unit

40211.1

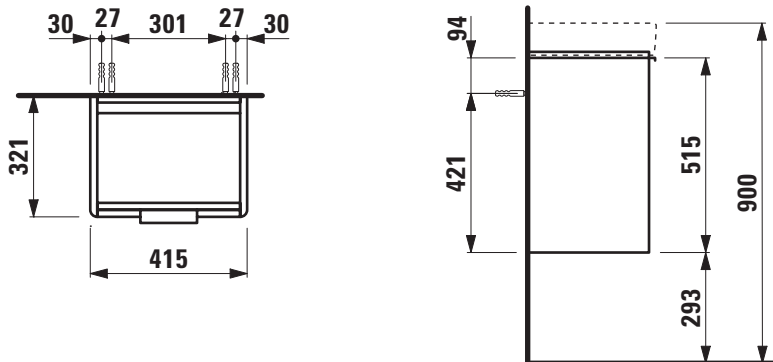
40211.2



TECHNICAL DATA

Order no.	40211.1 / door hinge left 40211.2 / door hinge right	Accessories excl.	Feet (2 pieces), anodized aluminium, order no. 40299.2 Towel rail, anodized aluminium, order no. 49095.0 Space saving siphon, order no. 89424.1
Dimensions (WxHxD)	415 x 515 x 321 mm	Mounting acc. incl.	Installation set for furniture, order no. 49114.0, 49301.5
Matching for	Washbasin, order no. 81596.1	Mounting information	The walls installed on must meet the requirements of the furniture in terms of weight and the supplied fastening elements. If this cannot be guaranteed another method of installation needs to be chosen. For example with feet.
Specification	Body/Front White matt: Body MDF with PVC foil (post-forming) Front MDF with PVC foil and ABS edges White glossy: Body MDF with PET foil (post-forming) Front MDF with PET foil and ABS edges Elm light/dark: Body particle board with CPL foil Front melamine coated particle board with ABS edges anodized aluminium handle bar on the top 1 door (soft-close mechanism) 1 internal glass shelf	Colours	260 – White matt 261 – White glossy 262 – Light elm 263 – Dark brown elm 999 – 39 other lacquered colours on request
Weight	11,5 kg		

TECHNICAL DRAWINGS / S 1 : 20



BASE FURNITURE FOR LAUFEN PRO S

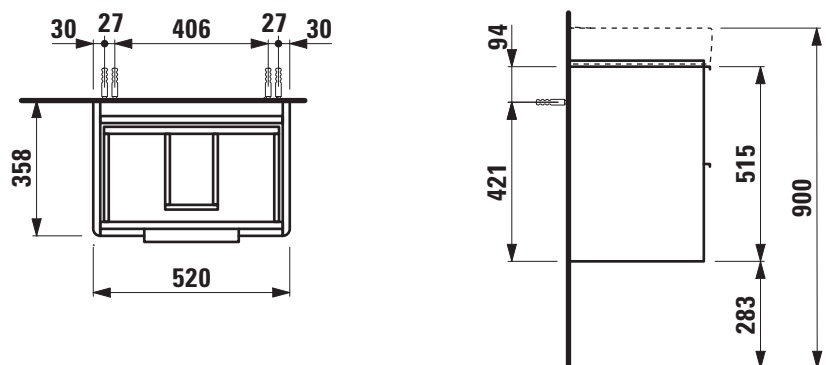
Vanity unit 40215.2



TECHNICAL DATA

Order no.	40215.2 / 2 drawers	Accessories excl.	Feet (2 pieces), anodized aluminium, order no. 40299.1
Dimensions (WxHxD)	520 x 515 x 358 mm		Towel rail, anodized aluminium, order no. 49095.1
Matching for	Washbasin, order no. 81895.8		Space saving siphon, order no. 89424.1
Specification	Body/Front	Mounting acc. incl.	Installation set for furniture, order no. 49114.0, 49301.5
	White matt: Body MDF with PVC foil (post-forming) Front MDF with PVC foil and ABS edges	Mounting information	The walls installed on must meet the requirements of the furniture in terms of weight and the supplied fastening elements. If this cannot be guaranteed another method of installation needs to be chosen. For example with feet.
	White glossy: Body MDF with PET foil (post-forming) Front MDF with PET foil and ABS edges	Colours	260 – White matt 261 – White glossy 262 – Light elm 263 – Dark brown elm 999 – 39 other lacquered colours on request
	Elm light/dark: Body particle board with CPL foil Front melamine coated particle board with ABS edges anodized aluminium handle bars on the top of the drawers 2 full extension drawers (soft-close mechanism)		
Weight	19,0 kg		

TECHNICAL DRAWINGS / S 1 : 20



BASE FURNITURE FOR LAUFEN PRO S

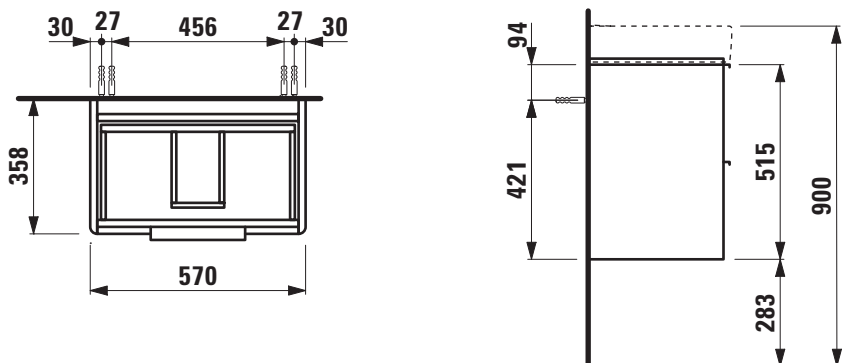
Vanity unit 40221.2



TECHNICAL DATA

Order no.	40221.2 / 2 drawers	Accessories excl.	Feet (2 pieces), anodized aluminium, order no. 40299.1
Dimensions (WxHxD)	570 x 515 x 358 mm		Towel rail, anodized aluminium, order no. 49095.1
Matching for	Washbasin, order no. 81895.9		Space saving siphon, order no. 89424.1
Specification	Body/Front	Mounting acc. incl.	Installation set for furniture, order no. 49114.0, 49301.5
	White matt: Body MDF with PVC foil (post-forming) Front MDF with PVC foil and ABS edges	Mounting information	The walls installed on must meet the requirements of the furniture in terms of weight and the supplied fastening elements. If this cannot be guaranteed another method of installation needs to be chosen. For example with feet.
	White glossy: Body MDF with PET foil (post-forming) Front MDF with PET foil and ABS edges	Colours	260 – White matt 261 – White glossy 262 – Light elm 263 – Dark brown elm 999 – 39 other lacquered colours on request
	Elm light/dark: Body particle board with CPL foil Front melamine coated particle board with ABS edges anodized aluminium handle bars on the top of the drawers 2 full extension drawers (soft-close mechanism)		
Weight	19,5 kg		

TECHNICAL DRAWINGS / S 1 : 20



BASE FURNITURE FOR LAUFEN PRO S

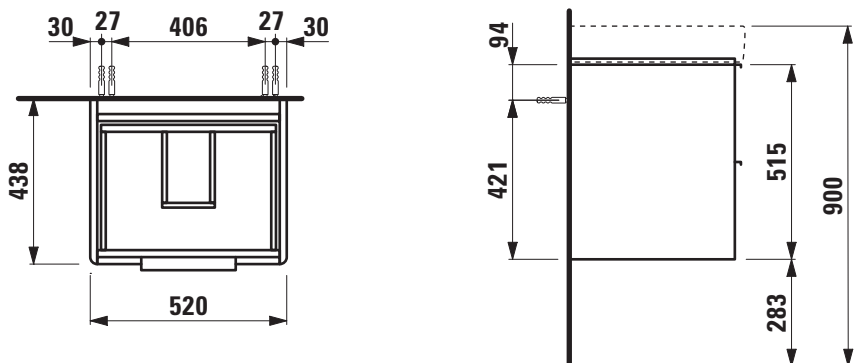
Vanity unit 40217.2



TECHNICAL DATA

Order no.	40217.2 / 2 drawers	Accessories excl.	Feet (2 pieces), anodized aluminium, order no. 40299.1
Dimensions (WxHxD)	520 x 515 x 438 mm		Towel rail, anodized aluminium, order no. 49095.1
Matching for	Washbasin, order no. 81096.2		Space saving siphon, order no. 89424.1
Specification	Body/Front	Mounting acc. incl.	Installation set for furniture, order no. 49114.0, 49301.5
	White matt: Body MDF with PVC foil (post-forming) Front MDF with PVC foil and ABS edges	Mounting information	The walls installed on must meet the requirements of the furniture in terms of weight and the supplied fastening elements. If this cannot be guaranteed another method of installation needs to be chosen. For example with feet.
	White glossy: Body MDF with PET foil (post-forming) Front MDF with PET foil and ABS edges	Colours	260 – White matt 261 – White glossy 262 – Light elm 263 – Dark brown elm 999 – 39 other lacquered colours on request
	Elm light/dark: Body particle board with CPL foil Front melamine coated particle board with ABS edges anodized aluminium handle bars on the top of the drawers 2 full extension drawers (soft-close mechanism)		
Weight	21,5 kg		

TECHNICAL DRAWINGS / S 1 : 20



BASE FURNITURE FOR LAUFEN PRO S

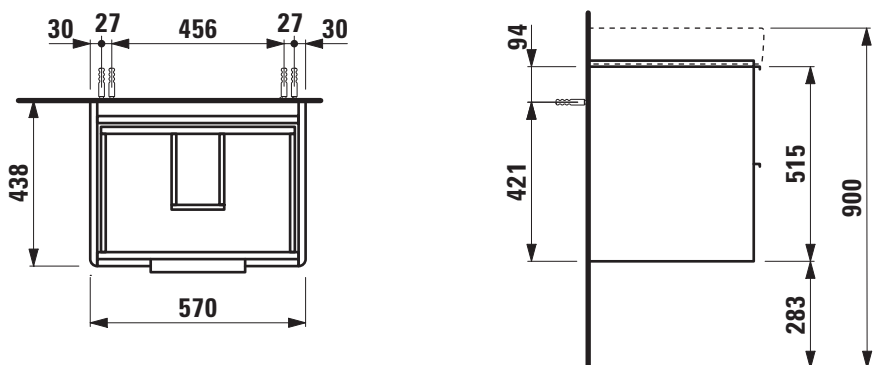
Vanity unit 40223.2



TECHNICAL DATA

Order no.	40223.2 / 2 drawers	Accessories excl.	Feet (2 pieces), anodized aluminium, order no. 40299.1
Dimensions (WxHxD)	570 x 515 x 438 mm		Towel rail, anodized aluminium, order no. 49095.1
Matching for	Washbasin, order no. 81096.3		Space saving siphon, order no. 89424.1
Specification	Body/Front	Mounting acc. incl.	Installation set for furniture, order no. 49114.0, 49301.5
	White matt: Body MDF with PVC foil (post-forming) Front MDF with PVC foil and ABS edges	Mounting information	The walls installed on must meet the requirements of the furniture in terms of weight and the supplied fastening elements. If this cannot be guaranteed another method of installation needs to be chosen. For example with feet.
	White glossy: Body MDF with PET foil (post-forming) Front MDF with PET foil and ABS edges	Colours	260 – White matt 261 – White glossy 262 – Light elm 263 – Dark brown elm 999 – 39 other lacquered colours on request
	Elm light/dark: Body particle board with CPL foil Front melamine coated particle board with ABS edges anodized aluminium handle bars on the top of the drawers 2 full extension drawers (soft-close mechanism)		
Weight	25,2 kg		

TECHNICAL DRAWINGS / S 1 : 20



BASE FURNITURE FOR LAUFEN PRO S

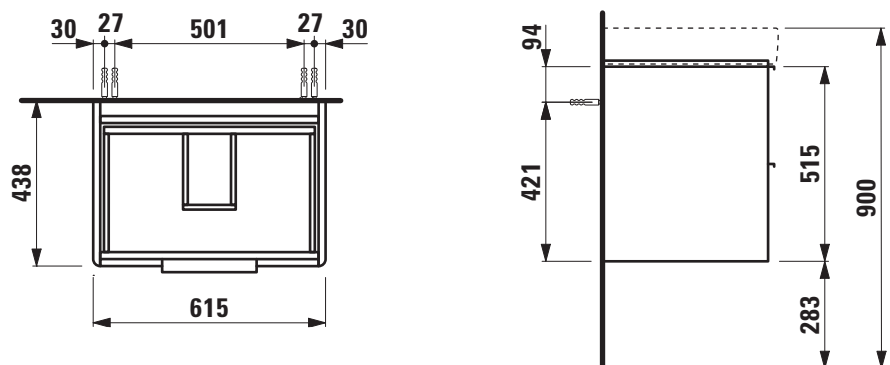
Vanity unit 40229.2



TECHNICAL DATA

Order no.	40229.2 / 2 drawers	Accessories excl.	Feet (2 pieces), anodized aluminium, order no. 40299.1
Dimensions (WxHxD)	615 x 515 x 438 mm		Towel rail, anodized aluminium, order no. 49095.1
Matching for	Washbasin, order no. 81096.4		Space saving siphon, order no. 89424.1
Specification	Body/Front	Mounting acc. incl.	Installation set for furniture, order no. 49114.0, 49301.5
	White matt: Body MDF with PVC foil (post-forming) Front MDF with PVC foil and ABS edges	Mounting information	The walls installed on must meet the requirements of the furniture in terms of weight and the supplied fastening elements. If this cannot be guaranteed another method of installation needs to be chosen. For example with feet.
	White glossy: Body MDF with PET foil (post-forming) Front MDF with PET foil and ABS edges	Colours	260 – White matt 261 – White glossy 262 – Light elm 263 – Dark brown elm 999 – 39 other lacquered colours on request
	Elm light/dark: Body particle board with CPL foil Front melamine coated particle board with ABS edges anodized aluminium handle bars on the top of the drawers 2 full extension drawers (soft-close mechanism)		
Weight	24,0 kg		

TECHNICAL DRAWINGS / S 1 : 20



BASE FURNITURE FOR LAUFEN PRO S

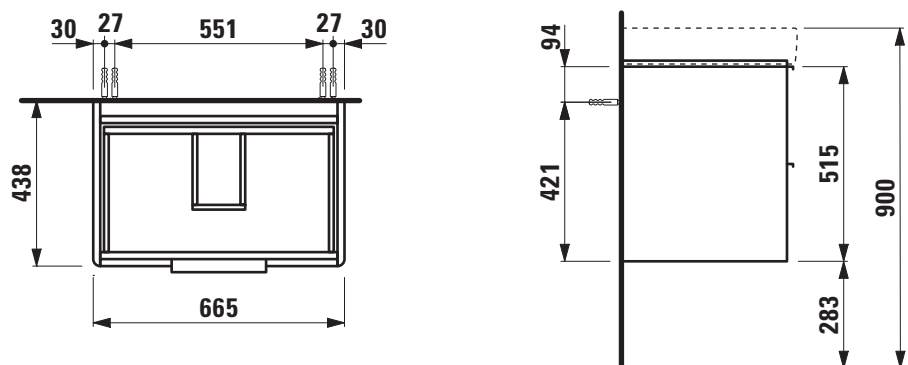
Vanity unit 40233.2



TECHNICAL DATA

Order no.	40233.2 / 2 drawers	Accessories excl.	Feet (2 pieces), anodized aluminium, order no. 40299.1
Dimensions (WxHxD)	665 x 515 x 438 mm		Towel rail, anodized aluminium, order no. 49095.1
Matching for	Washbasin, order no. 81096.7		Space saving siphon, order no. 89424.1
Specification	Body/Front	Mounting acc. incl.	Installation set for furniture, order no. 49114.0, 49301.5
	White matt: Body MDF with PVC foil (post-forming) Front MDF with PVC foil and ABS edges	Mounting information	The walls installed on must meet the requirements of the furniture in terms of weight and the supplied fastening elements. If this cannot be guaranteed another method of installation needs to be chosen. For example with feet.
	White glossy: Body MDF with PET foil (post-forming) Front MDF with PET foil and ABS edges	Colours	260 – White matt 261 – White glossy 262 – Light elm 263 – Dark brown elm 999 – 39 other lacquered colours on request
	Elm light/dark: Body particle board with CPL foil Front melamine coated particle board with ABS edges anodized aluminium handle bars on the top of the drawers 2 full extension drawers (soft-close mechanism)		
Weight	25,2 kg		

TECHNICAL DRAWINGS / S 1 : 20



BASE FURNITURE FOR LAUFEN PRO S

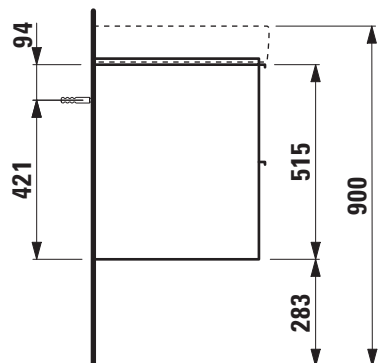
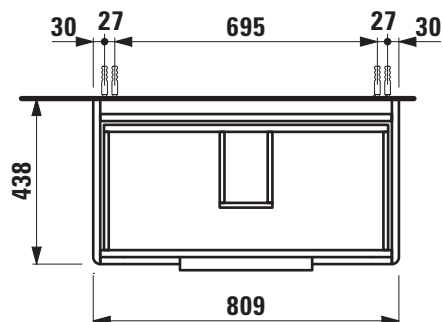
Vanity unit
40239.2



TECHNICAL DATA

Order no.	40239.2 / 2 drawers	Accessories excl.	Feet (2 pieces), anodized aluminium, order no. 40299.1
Dimensions (WxHxD)	809 x 515 x 438 mm		Towel rail, anodized aluminium, order no. 49095.1
Matching for	Washbasin, order no. 81396.5		Space saving siphon, order no. 89424.1
Specification	Body/Front	Mounting acc. incl.	Installation set for furniture, order no. 49114.0, 49301.5
	White matt: Body MDF with PVC foil (post-forming) Front MDF with PVC foil and ABS edges	Mounting information	The walls installed on must meet the requirements of the furniture in terms of weight and the supplied fastening elements. If this cannot be guaranteed another method of installation needs to be chosen. For example with feet.
	White glossy: Body MDF with PET foil (post-forming) Front MDF with PET foil and ABS edges	Colours	260 – White matt 261 – White glossy 262 – Light elm 263 – Dark brown elm 999 – 39 other lacquered colours on request
	Elm light/dark: Body particle board with CPL foil Front melamine coated particle board with ABS edges anodized aluminium handle bars on the top of the drawers 2 full extension drawers (soft-close mechanism)		
Weight	29,7 kg		

TECHNICAL DRAWINGS / S 1 : 20



BASE FURNITURE FOR LAUFEN PRO S

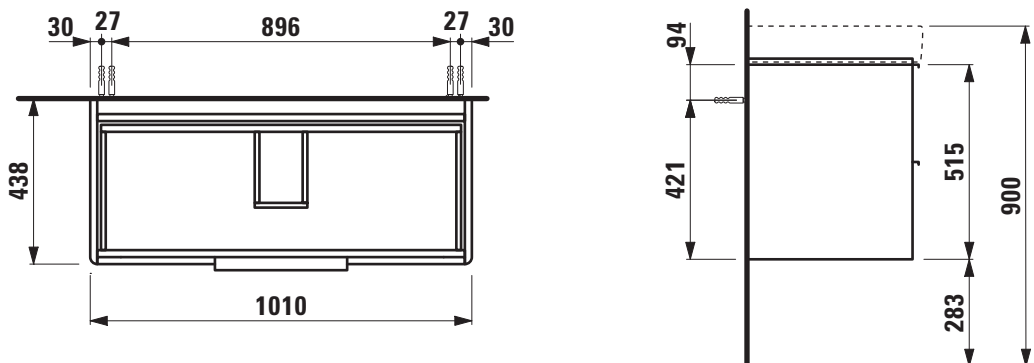
Vanity unit 40245.2



TECHNICAL DATA

Order no.	40245.2 / 2 drawers	Accessories excl.	Feet (2 pieces), anodized aluminium, order no. 40299.1
Dimensions (WxHxD)	1010 x 515 x 438 mm		Towel rail, anodized aluminium, order no. 49095.1
Matching for	Washbasin, order no. 81396.6		Space saving siphon, order no. 89424.1
Specification	Body/Front	Mounting acc. incl.	Installation set for furniture, order no. 49114.0, 49301.5
	White matt: Body MDF with PVC foil (post-forming) Front MDF with PVC foil and ABS edges	Mounting information	The walls installed on must meet the requirements of the furniture in terms of weight and the supplied fastening elements. If this cannot be guaranteed another method of installation needs to be chosen. For example with feet.
	White glossy: Body MDF with PET foil (post-forming) Front MDF with PET foil and ABS edges	Colours	260 – White matt 261 – White glossy 262 – Light elm 263 – Dark brown elm 999 – 39 other lacquered colours on request
	Elm light/dark: Body particle board with CPL foil Front melamine coated particle board with ABS edges anodized aluminium handle bars on the top of the drawers 2 full extension drawers (soft-close mechanism)		
Weight	34,5 kg		

TECHNICAL DRAWINGS / S 1 : 20



BASE FURNITURE FOR LAUFEN PRO S

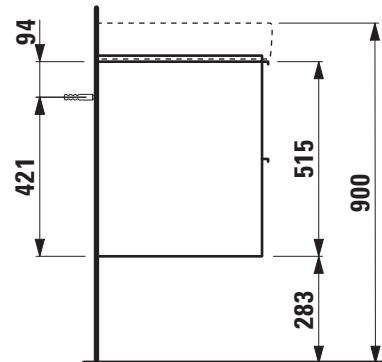
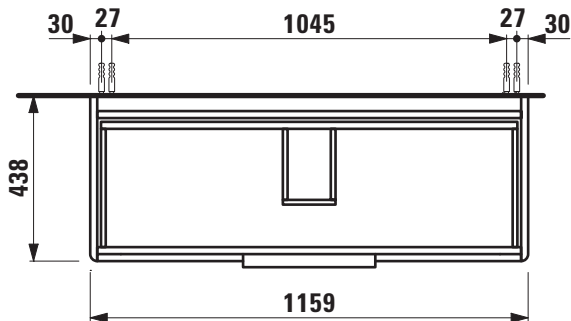
Vanity unit 40249.2



TECHNICAL DATA

Order no.	40249.2 / 2 drawers	Accessories excl.	Feet (2 pieces), anodized aluminium, order no. 40299.1
Dimensions (WxHxD)	1159 x 515 x 438 mm		Towel rail, anodized aluminium, order no. 49095.1
Matching for	Double washbasin, order no. 81496.5		Space saving siphon, order no. 89424.1
Specification	Body/Front	Mounting acc. incl.	Installation set for furniture, order no. 49114.0, 49301.5
	White matt: Body MDF with PVC foil (post-forming) Front MDF with PVC foil and ABS edges	Mounting information	The walls installed on must meet the requirements of the furniture in terms of weight and the supplied fastening elements. If this cannot be guaranteed another method of installation needs to be chosen. For example with feet.
	White glossy: Body MDF with PET foil (post-forming) Front MDF with PET foil and ABS edges	Colours	260 – White matt 261 – White glossy 262 – Light elm 263 – Dark brown elm 999 – 39 other lacquered colours on request
	Elm light/dark: Body particle board with CPL foil Front melamine coated particle board with ABS edges anodized aluminium handle bars on the top of the drawers 2 full extension drawers (soft-close mechanism)		
Weight	38,5 kg		

TECHNICAL DRAWINGS / S 1 : 20



BASE FURNITURE FOR LAUFEN PRO S

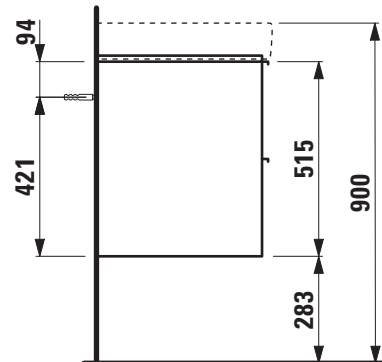
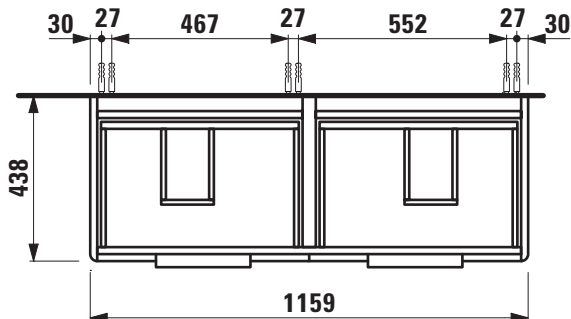
Vanity unit
40249.4



TECHNICAL DATA

Order no.	40249.4 / 4 drawers	Accessories excl.	Feet (2 pieces), anodized aluminium, order no. 40299.1
Dimensions (WxHxD)	1159 x 515 x 438 mm		Towel rail, anodized aluminium, order no. 49095.1
Matching for	Double washbasin, order no. 81496.6		Space saving siphon, order no. 89424.1
Specification	Body/Front	Mounting acc. incl.	Installation set for furniture, order no. 49260.5, 49301.5
	White matt: Body MDF with PVC foil (post-forming) Front MDF with PVC foil and ABS edges	Mounting information	The walls installed on must meet the requirements of the furniture in terms of weight and the supplied fastening elements. If this cannot be guaranteed another method of installation needs to be chosen. For example with feet.
	White glossy: Body MDF with PET foil (post-forming) Front MDF with PET foil and ABS edges	Colours	260 – White matt 261 – White glossy 262 – Light elm 263 – Dark brown elm 999 – 39 other lacquered colours on request
	Elm light/dark: Body particle board with CPL foil Front melamine coated particle board with ABS edges anodized aluminium handle bars on the top of the drawers 4 full extension drawers (soft-close mechanism)		
Weight	45,0 kg		

TECHNICAL DRAWINGS / S 1 : 20



BASE FURNITURE FOR LAUFEN PRO S

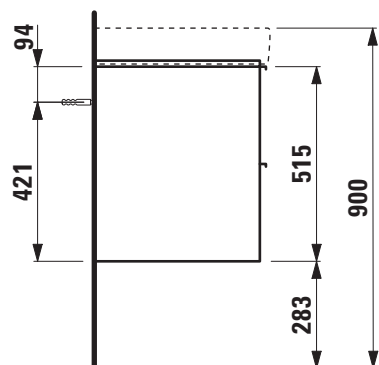
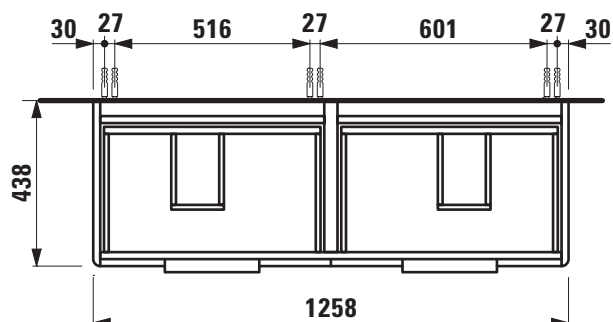
Vanity unit 40251.2



TECHNICAL DATA

Order no.	40251.2 / 4 drawers	Accessories excl.	Feet (2 pieces), anodized aluminium, order no. 40299.1
Dimensions (WxHxD)	1258 x 515 x 438 mm		Towel rail, anodized aluminium, order no. 49095.1
Matching for	Double washbasin, order no. 81496.8		Space saving siphon, order no. 89424.1
Specification	Body/Front	Mounting acc. incl.	Installation set for furniture, order no. 49260.5, 49301.5
	White matt: Body MDF with PVC foil (post-forming) Front MDF with PVC foil and ABS edges	Mounting information	The walls installed on must meet the requirements of the furniture in terms of weight and the supplied fastening elements. If this cannot be guaranteed another method of installation needs to be chosen. For example with feet.
	White glossy: Body MDF with PET foil (post-forming) Front MDF with PET foil and ABS edges	Colours	260 – White matt 261 – White glossy 262 – Light elm 263 – Dark brown elm 999 – 39 other lacquered colours on request
	Elm light/dark: Body particle board with CPL foil Front melamine coated particle board with ABS edges anodized aluminium handle bars on the top of the drawers 4 full extension drawers (soft-close mechanism)		
Weight	46,8 kg		

TECHNICAL DRAWINGS / S 1 : 20

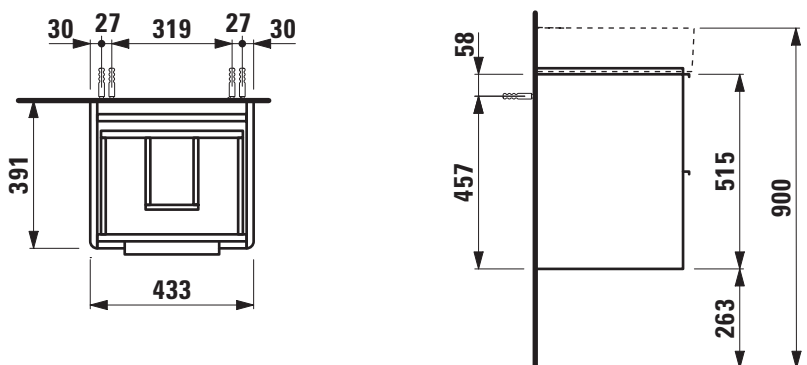




TECHNICAL DATA

Order no.	40213.2 / 2 drawers	Accessories excl.	Feet (2 pieces), anodized aluminium, order no. 40299.0
Dimensions (WxHxD)	433 x 515 x 391 mm		Towel rail, anodized aluminium, order no. 49095.1
Matching for	Washbasin, order no. 81528.1		Space saving siphon, order no. 89424.1
Specification	Body/Front	Mounting acc. incl.	Installation set for furniture, order no. 49114.0, 49301.5
	White matt: Body MDF with PVC foil (post-forming) Front MDF with PVC foil and ABS edges	Mounting information	The walls installed on must meet the requirements of the furniture in terms of weight and the supplied fastening elements. If this cannot be guaranteed another method of installation needs to be chosen. For example with feet.
	White glossy: Body MDF with PET foil (post-forming) Front MDF with PET foil and ABS edges	Colours	260 – White matt 261 – White glossy 262 – Light elm 263 – Dark brown elm 999 – 39 other lacquered colours on request
	Elm light/dark: Body particle board with CPL foil Front melamine coated particle board with ABS edges anodized aluminium handle bars on the top of the drawers 2 full extension drawers (soft-close mechanism)		
Weight	17,7 kg		

TECHNICAL DRAWINGS / S 1 : 20

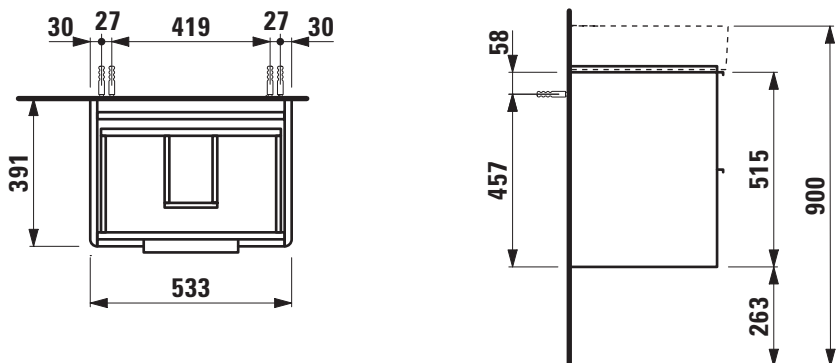




TECHNICAL DATA

Order no.	40219.2 / 2 drawers	Accessories excl.	Feet (2 pieces), anodized aluminium, order no. 40299.0
Dimensions (WxHxD)	533 x 515 x 391 mm		Towel rail, anodized aluminium, order no. 49095.1
Matching for	Washbasin, order no. 81028.2		Space saving siphon, order no. 89424.1
Specification	Body/Front	Mounting acc. incl.	Installation set for furniture, order no. 49114.0, 49301.5
	White matt: Body MDF with PVC foil (post-forming) Front MDF with PVC foil and ABS edges	Mounting information	The walls installed on must meet the requirements of the furniture in terms of weight and the supplied fastening elements. If this cannot be guaranteed another method of installation needs to be chosen. For example with feet.
	White glossy: Body MDF with PET foil (post-forming) Front MDF with PET foil and ABS edges	Colours	260 – White matt 261 – White glossy 262 – Light elm 263 – Dark brown elm 999 – 39 other lacquered colours on request
	Elm light/dark: Body particle board with CPL foil Front melamine coated particle board with ABS edges anodized aluminium handle bars on the top of the drawers 2 full extension drawers (soft-close mechanism)		
Weight	18,8 kg		

TECHNICAL DRAWINGS / S 1 : 20

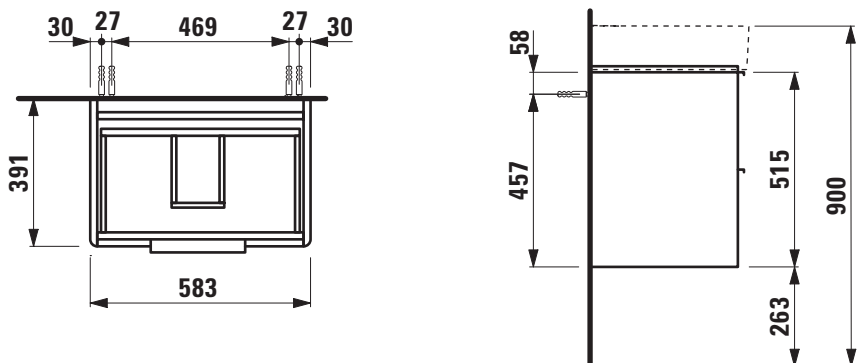




TECHNICAL DATA

Order no.	40225.2 / 2 drawers	Accessories excl.	Feet (2 pieces), anodized aluminium, order no. 40299.0
Dimensions (WxHxD)	583 x 515 x 391 mm		Towel rail, anodized aluminium, order no. 49095.1
Matching for	Washbasin, order no. 81028.3		Space saving siphon, order no. 89424.1
Specification	Body/Front	Mounting acc. incl.	Installation set for furniture, order no. 49114.0, 49301.5
	White matt: Body MDF with PVC foil (post-forming) Front MDF with PVC foil and ABS edges	Mounting information	The walls installed on must meet the requirements of the furniture in terms of weight and the supplied fastening elements. If this cannot be guaranteed another method of installation needs to be chosen. For example with feet.
	White glossy: Body MDF with PET foil (post-forming) Front MDF with PET foil and ABS edges	Colours	260 – White matt 261 – White glossy 262 – Light elm 263 – Dark brown elm 999 – 39 other lacquered colours on request
	Elm light/dark: Body particle board with CPL foil Front melamine coated particle board with ABS edges anodized aluminium handle bars on the top of the drawers 2 full extension drawers (soft-close mechanism)		
Weight	20,3 kg		

TECHNICAL DRAWINGS / S 1 : 20

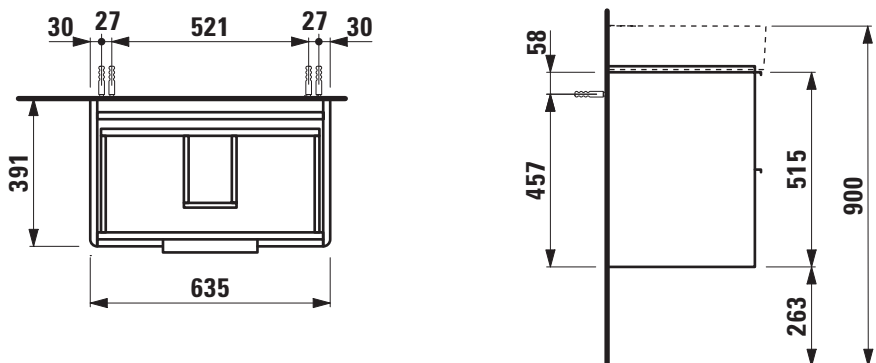




TECHNICAL DATA

Order no.	40231.2 / 2 drawers	Accessories excl.	Feet (2 pieces), anodized aluminium, order no. 40299.0
Dimensions (WxHxD)	635 x 515 x 391 mm		Towel rail, anodized aluminium, order no. 49095.1
Matching for	Washbasin, order no. 81028.4		Space saving siphon, order no. 89424.1
Specification	Body/Front	Mounting acc. incl.	Installation set for furniture, order no. 49114.0, 49301.5
	White matt: Body MDF with PVC foil (post-forming) Front MDF with PVC foil and ABS edges	Mounting information	The walls installed on must meet the requirements of the furniture in terms of weight and the supplied fastening elements. If this cannot be guaranteed another method of installation needs to be chosen. For example with feet.
	White glossy: Body MDF with PET foil (post-forming) Front MDF with PET foil and ABS edges	Colours	260 – White matt 261 – White glossy 262 – Light elm 263 – Dark brown elm 999 – 39 other lacquered colours on request
	Elm light/dark: Body particle board with CPL foil Front melamine coated particle board with ABS edges anodized aluminium handle bars on the top of the drawers 2 full extension drawers (soft-close mechanism)		
Weight	21,0 kg		

TECHNICAL DRAWINGS / S 1 : 20

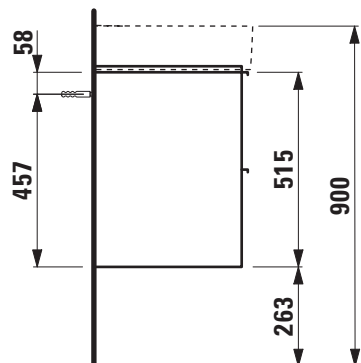
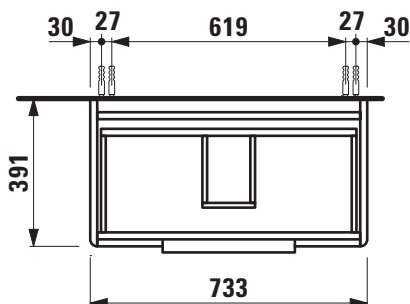




TECHNICAL DATA

Order no.	40235.2 / 2 drawers	Accessories excl.	Feet (2 pieces), anodized aluminium, order no. 40299.0
Dimensions (WxHxD)	733 x 515 x 391 mm		Towel rail, anodized aluminium, order no. 49095.1
Matching for	Washbasin, order no. 81028.5		Space saving siphon, order no. 89424.1
Specification	Body/Front	Mounting acc. incl.	Installation set for furniture, order no. 49114.0, 49301.5
	White matt: Body MDF with PVC foil (post-forming) Front MDF with PVC foil and ABS edges	Mounting information	The walls installed on must meet the requirements of the furniture in terms of weight and the supplied fastening elements. If this cannot be guaranteed another method of installation needs to be chosen. For example with feet.
	White glossy: Body MDF with PET foil (post-forming) Front MDF with PET foil and ABS edges	Colours	260 – White matt 261 – White glossy 262 – Light elm 263 – Dark brown elm 999 – 39 other lacquered colours on request
	Elm light/dark: Body particle board with CPL foil Front melamine coated particle board with ABS edges anodized aluminium handle bars on the top of the drawers 2 full extension drawers (soft-close mechanism)		
Weight	24,4 kg		

TECHNICAL DRAWINGS / S 1 : 20

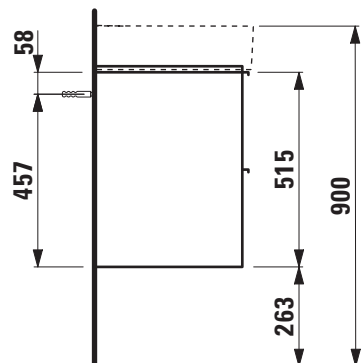
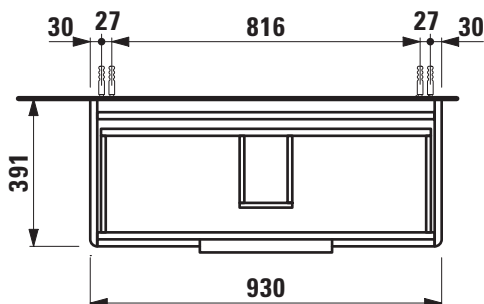




TECHNICAL DATA

Order no.	40241.2 / 2 drawers	Accessories excl.	Feet (2 pieces), anodized aluminium, order no. 40299.0
Dimensions (WxHxD)	930 x 515 x 391 mm		Towel rail, anodized aluminium, order no. 49095.1
Matching for	Washbasin, order no. 81028.7		Space saving siphon, order no. 89424.1
Specification	Body/Front	Mounting acc. incl.	Installation set for furniture, order no. 49114.0, 49301.5
	White matt: Body MDF with PVC foil (post-forming) Front MDF with PVC foil and ABS edges	Mounting information	The walls installed on must meet the requirements of the furniture in terms of weight and the supplied fastening elements. If this cannot be guaranteed another method of installation needs to be chosen. For example with feet.
	White glossy: Body MDF with PET foil (post-forming) Front MDF with PET foil and ABS edges	Colours	260 – White matt 261 – White glossy 262 – Light elm 263 – Dark brown elm 999 – 39 other lacquered colours on request
	Elm light/dark: Body particle board with CPL foil Front melamine coated particle board with ABS edges anodized aluminium handle bars on the top of the drawers 2 full extension drawers (soft-close mechanism)		
Weight	27,7 kg		

TECHNICAL DRAWINGS / S 1 : 20

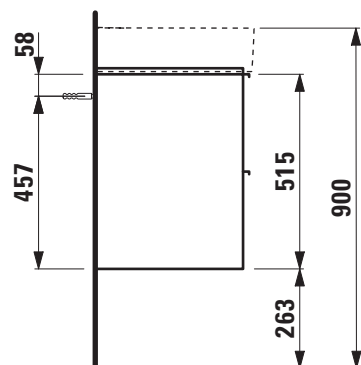
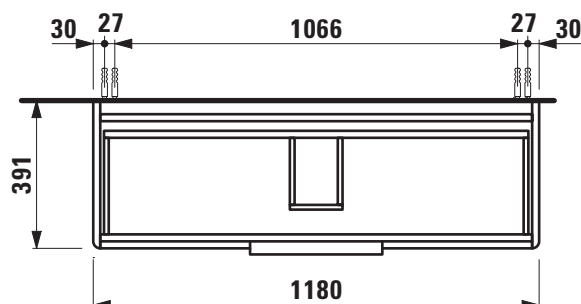




TECHNICAL DATA

Order no.	40247.2 / 2 drawers	Accessories excl.	Feet (2 pieces), anodized aluminium, order no. 40299.0
Dimensions (WxHxD)	1180 x 515 x 391 mm		Towel rail, anodized aluminium, order no. 49095.1
Matching for	Washbasin, order no. 81028.9		Space saving siphon, order no. 89424.1
Specification	Body/Front	Mounting acc. incl.	Installation set for furniture, order no. 49114.0, 49301.5
	White matt: Body MDF with PVC foil (post-forming) Front MDF with PVC foil and ABS edges	Mounting information	The walls installed on must meet the requirements of the furniture in terms of weight and the supplied fastening elements. If this cannot be guaranteed another method of installation needs to be chosen. For example with feet.
	White glossy: Body MDF with PET foil (post-forming) Front MDF with PET foil and ABS edges	Colours	260 – White matt 261 – White glossy 262 – Light elm 263 – Dark brown elm 999 – 39 other lacquered colours on request
	Elm light/dark: Body particle board with CPL foil Front melamine coated particle board with ABS edges anodized aluminium handle bars on the top of the drawers 2 full extension drawers (soft-close mechanism)		
Weight	33,9 kg		

TECHNICAL DRAWINGS / S 1 : 20



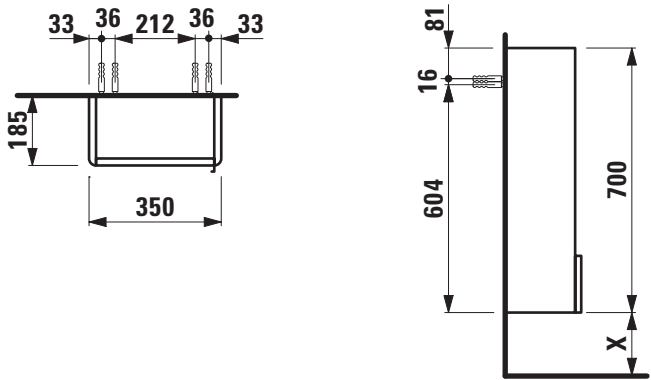


TECHNICAL DATA

Order no.	40260.1 / door hinge left
Dimensions (WxHxD)	350 x 700 x 185 mm
Specification	Body/Front
	White matt: Body MDF with PVC foil (post-forming) Front MDF with PVC foil and ABS edges
	White glossy: Body MDF with PET foil (post-forming) Front MDF with PET foil and ABS edges
	Elm light/dark: Body particle board with CPL foil Front melamine coated particle board with ABS edges
	anodized aluminium handle bar
	1 door (soft-close mechanism)
	2 glass shelves (adjustable)
Weight	10,5 kg
Mounting acc. incl.	Installation set for furniture, order no. 49302.1

Mounting information	The walls installed on must meet the requirements of the furniture in terms of weight and the supplied fastening elements. If this cannot be guaranteed another method of installation needs to be chosen.
Colours	260 – White matt 261 – White glossy 262 – Light elm 263 – Dark brown elm 999 – 39 other lacquered colours on request

TECHNICAL DRAWINGS / S 1 : 20



X = The exact height must be set during installation.

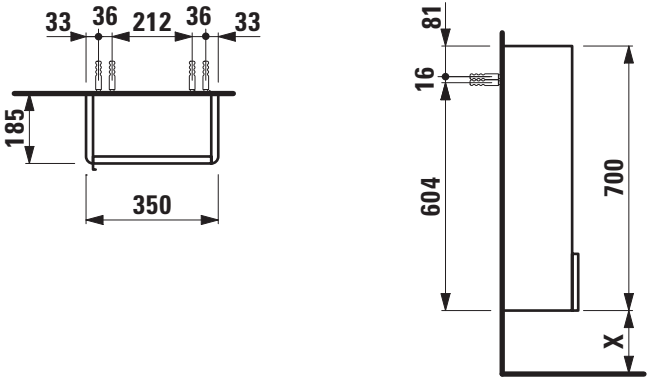


TECHNICAL DATA

Order no.	40260.2 / door hinge right
Dimensions (WxHxD)	350 x 700 x 185 mm
Specification	Body/Front White matt: Body MDF with PVC foil (post-forming) Front MDF with PVC foil and ABS edges White glossy: Body MDF with PET foil (post-forming) Front MDF with PET foil and ABS edges Elm light/dark: Body particle board with CPL foil Front melamine coated particle board with ABS edges anodized aluminium handle bar 1 door (soft-close mechanism) 2 glass shelves (adjustable)
Weight	10,5 kg
Mounting acc. incl.	Installation set for furniture, order no. 49302.1

Mounting information	The walls installed on must meet the requirements of the furniture in terms of weight and the supplied fastening elements. If this cannot be guaranteed another method of installation needs to be chosen.
Colours	260 – White matt 261 – White glossy 262 – Light elm 263 – Dark brown elm 999 – 39 other lacquered colours on request

TECHNICAL DRAWINGS / S 1 : 20



X = The exact height must be set during installation.

BASE FURNITURE

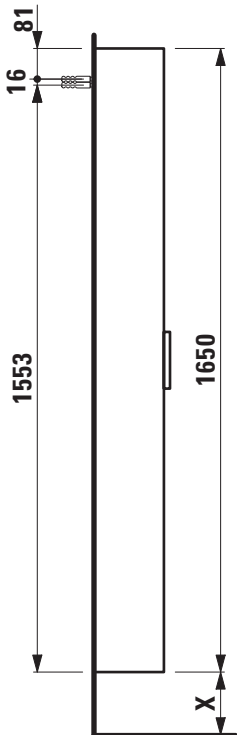
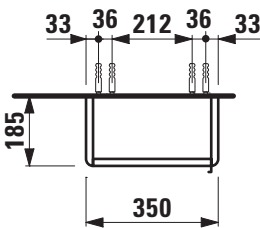
Tall cabinet 40264.1



TECHNICAL DATA

Order no.	40264.1 / door hinge left	Accessories excl.	Feet (2 pieces), aluminium, height X / order no. for combination with vanity units
Dimensions (WxHxD)	350 x 1650 x 185 mm		Base for Laufen Pro S: 283 mm / 40299.1, 293 mm / 40299.2
Specification	<p>White matt: Body MDF with PVC foil (post-forming) Front MDF with PVC foil and ABS edges</p> <p>White glossy: Body MDF with PET foil (post-forming) Front MDF with PET foil and ABS edges</p> <p>Elm light/dark: Body particle board with CPL foil Front melamine coated particle board with ABS edges</p> <p>anodized aluminium handle bar 1 door (soft-close mechanism) 1 fixed shelf, 4 glass shelves (adjustable)</p>	<p>Mounting acc. incl. Installation set for furniture, order no. 49302.1</p> <p>Mounting information The walls installed on must meet the requirements of the furniture in terms of weight and the supplied fastening elements. If this cannot be guaranteed another method of installation needs to be chosen. For example with feet.</p>	Base for Val: 263 mm / 40299.0
Weight	22,5 kg	Colours	<p>260 – White matt</p> <p>261 – White glossy</p> <p>262 – Light elm</p> <p>263 – Dark brown elm</p> <p>999 – 39 other lacquered colours on request</p>

TECHNICAL DRAWINGS / S 1 : 20



X = The exact height must be set during installation.

BASE FURNITURE

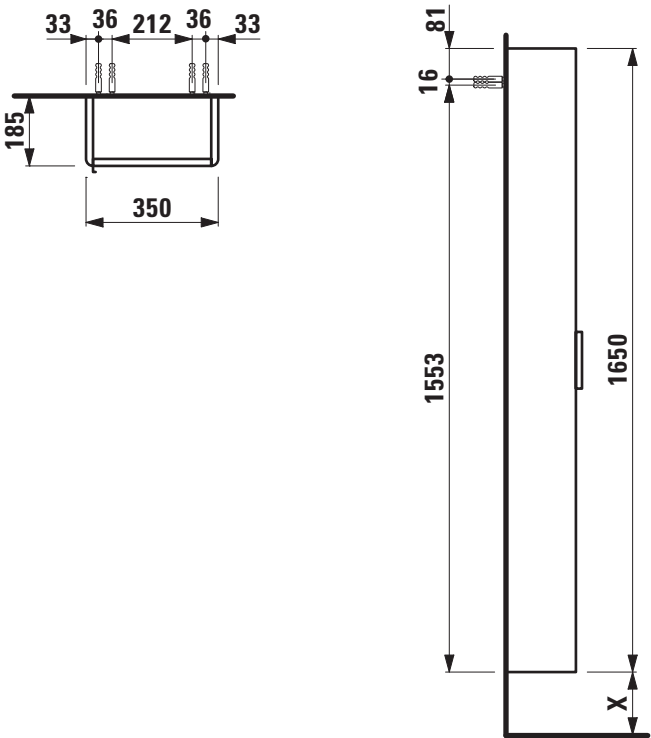
Tall cabinet
40264.2



TECHNICAL DATA

Order no.	40264.2 / door hinge right	Accessories excl.	Feet (2 pieces), aluminium, height X / order no. for combination with vanity units
Dimensions (WxHxD)	350 x 1650 x 185 mm		Base for Laufen Pro S: 283 mm / 40299.1, 293 mm / 40299.2
Specification	White matt: Body MDF with PVC foil (post-forming) Front MDF with PVC foil and ABS edges White glossy: Body MDF with PET foil (post-forming) Front MDF with PET foil and ABS edges Elm light/dark: Body particle board with CPL foil Front melamine coated particle board with ABS edges anodized aluminium handle bar 1 door (soft-close mechanism) 1 fixed shelf, 4 glass shelves (adjustable)	Mounting acc. incl.	Base for Val: 263 mm / 40299.0 Installation set for furniture, order no. 49302.1
		Mounting information	The walls installed on must meet the requirements of the furniture in terms of weight and the supplied fastening elements. If this cannot be guaranteed another method of installation needs to be chosen. For example with feet.
		Colours	260 – White matt 261 – White glossy 262 – Light elm 263 – Dark brown elm 999 – 39 other lacquered colours on request
Weight	22,5 kg		

TECHNICAL DRAWINGS / S 1 : 20



X = The exact height must be set during installation.

BASE FURNITURE

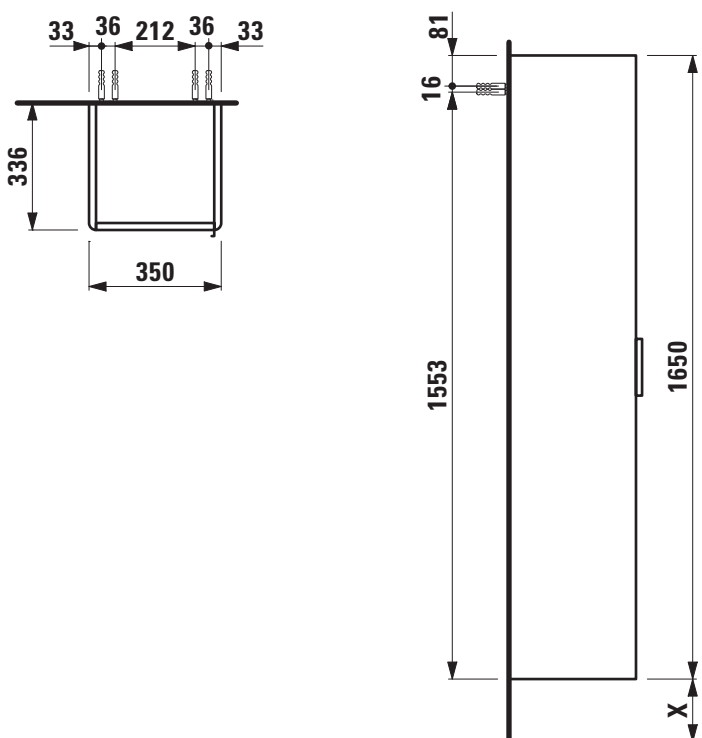
Tall cabinet 40267.1



TECHNICAL DATA

Order no.	40267.1 / door hinge left	Accessories excl	Laundry basket, order no. 49302.0
Dimensions (WxHxD)	350 x 1650 x 336 mm		Feet (2 pieces), aluminium, height X / order no. for combination with vanity units
Specification	White matt: Body MDF with PVC foil (post-forming) Front MDF with PVC foil and ABS edges		Base for Laufen Pro S: 283 mm / 40299.1, 293 mm / 40299.2
	White glossy: Body MDF with PET foil (post-forming) Front MDF with PET foil and ABS edges	Mounting acc. incl.	Base for Val: 263 mm / 40299.0
	Elm light/dark: Body particle board with CPL foil Front melamine coated particle board with ABS edges	Mounting information	Installation set for furniture, order no. 49302.1
	anodized aluminium handle bar		The walls installed on must meet the requirements of the furniture in terms of weight and the supplied fastening elements. If this cannot be guaranteed another method of installation needs to be chosen. For example with feet.
	1 door (soft-close mechanism) 1 fixed shelf, 4 glass shelves (adjustable)	Colours	260 – White matt 261 – White glossy 262 – Light elm 263 – Dark brown elm 999 – 39 other lacquered colours on request
Weight	36,0 kg		

TECHNICAL DRAWINGS / S 1 : 20



X = The exact height must be set during installation.

BASE FURNITURE

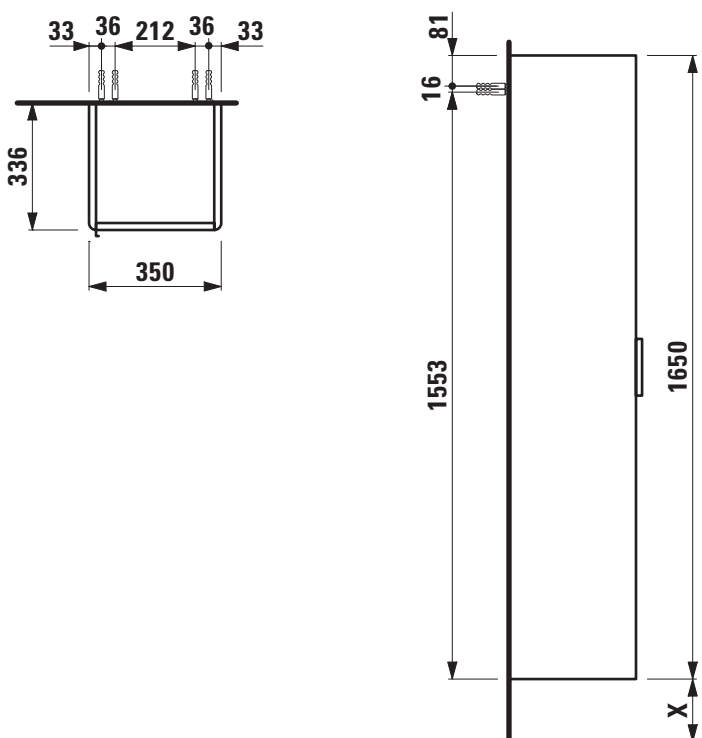
Tall cabinet 40267.2



TECHNICAL DATA

Order no.	40267.2 / door hinge right	Accessories excl	Laundry basket, order no. 49302.0
Dimensions (WxHxD)	350 x 1650 x 336 mm		Feet (2 pieces), aluminium, height X / order no. for combination with vanity units
Specification	White matt: Body MDF with PVC foil (post-forming) Front MDF with PVC foil and ABS edges		Base for Laufen Pro S: 283 mm / 40299.1, 293 mm / 40299.2
	White glossy: Body MDF with PET foil (post-forming) Front MDF with PET foil and ABS edges	Mounting acc. incl.	Base for Val: 263 mm / 40299.0
	Elm light/dark: Body particle board with CPL foil Front melamine coated particle board with ABS edges	Mounting information	Installation set for furniture, order no. 49302.1
	anodized aluminium handle bar		The walls installed on must meet the requirements of the furniture in terms of weight and the supplied fastening elements. If this cannot be guaranteed another method of installation needs to be chosen. For example with feet.
	1 door (soft-close mechanism) 1 fixed shelf, 4 glass shelves (adjustable)	Colours	260 – White matt 261 – White glossy 262 – Light elm 263 – Dark brown elm 999 – 39 other lacquered colours on request
Weight	36,0 kg		

TECHNICAL DRAWINGS / S 1 : 20



X = The exact height must be set during installation.

BASE FURNITURE

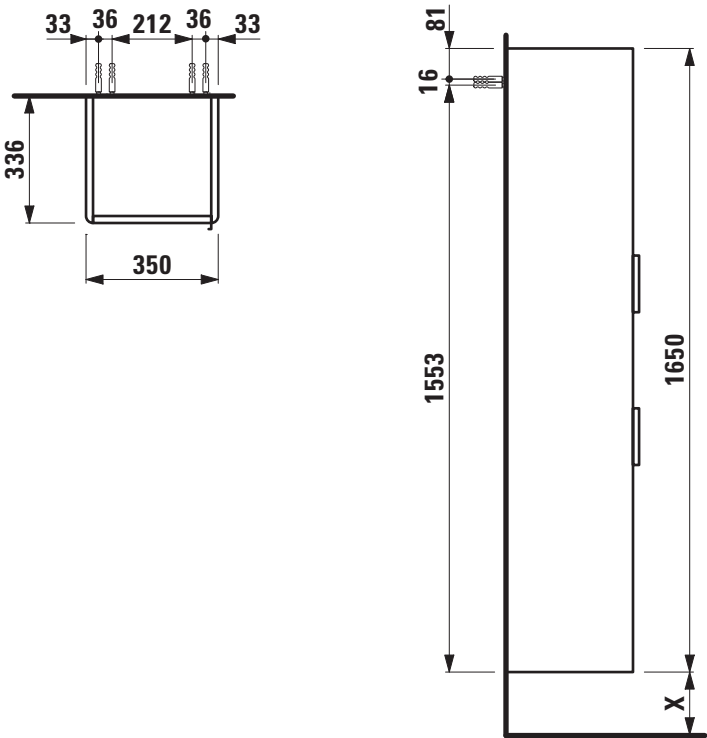
Tall cabinet 40269.1



TECHNICAL DATA

Order no.	40269.1 / door hinge left		Accessories excl	Laundry basket, order no. 49302.0
Dimensions (WxHxD)	350 x 1650 x 336 mm			Feet (2 pieces), aluminium, height X / order no. for combination with vanity units
Specification	White matt:	Body MDF with PVC foil (post-forming) Front MDF with PVC foil and ABS edges		Base for Laufen Pro S: 283 mm / 40299.1, 293 mm / 40299.2
	White glossy:	Body MDF with PET foil (post-forming) Front MDF with PET foil and ABS edges	Mounting acc. incl.	Base for Val: 263 mm / 40299.0
	Elm light/dark:	Body particle board with CPL foil Front melamine coated particle board with ABS edges	Mounting information	Installation set for furniture, order no. 49302.1
		anodized aluminium handle bar		The walls installed on must meet the requirements of the furniture in terms of weight and the supplied fastening elements. If this cannot be guaranteed another method of installation needs to be chosen. For example with feet.
		2 doors (soft-close mechanism), 1 open space) 4 glass shelves (adjustable)	Colours	260 – White matt 261 – White glossy 262 – Light elm 263 – Dark brown elm 999 – 39 other lacquered colours on request
Weight	34,0 kg			

TECHNICAL DRAWINGS / S 1 : 20



X = The exact hight must be set during installation.

BASE FURNITURE

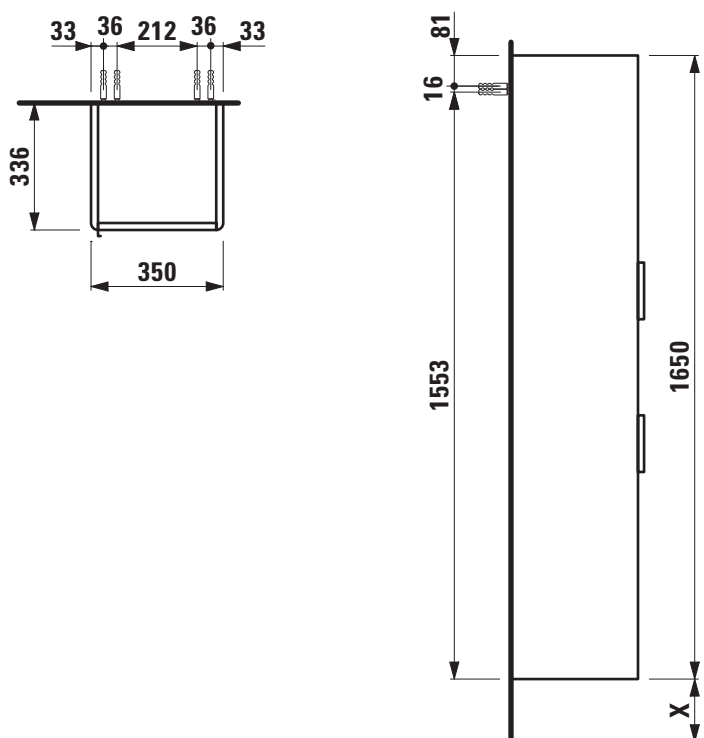
Tall cabinet 40269.2



TECHNICAL DATA

Order no.	40269.2 / door hinge right	Accessories excl	Laundry basket, order no. 49302.0
Dimensions (WxHxD)	350 x 1650 x 336 mm		Feet (2 pieces), aluminium, height X / order no. for combination with vanity units
Specification	White matt: Body MDF with PVC foil (post-forming) Front MDF with PVC foil and ABS edges		Base for Laufen Pro S: 283 mm / 40299.1, 293 mm / 40299.2
	White glossy: Body MDF with PET foil (post-forming) Front MDF with PET foil and ABS edges	Mounting acc. incl.	Base for Val: 263 mm / 40299.0
	Elm light/dark: Body particle board with CPL foil Front melamine coated particle board with ABS edges	Mounting information	Installation set for furniture, order no. 49302.1
	anodized aluminium handle bar		The walls installed on must meet the requirements of the furniture in terms of weight and the supplied fastening elements. If this cannot be guaranteed another method of installation needs to be chosen. For example with feet.
	2 doors (soft-close mechanism), 1 open space) 4 glass shelves (adjustable)	Colours	260 – White matt 261 – White glossy 262 – Light elm 263 – Dark brown elm 999 – 39 other lacquered colours on request
Weight	34,0 kg		

TECHNICAL DRAWINGS / S 1 : 20



X = The exact height must be set during installation.

BASE FURNITURE

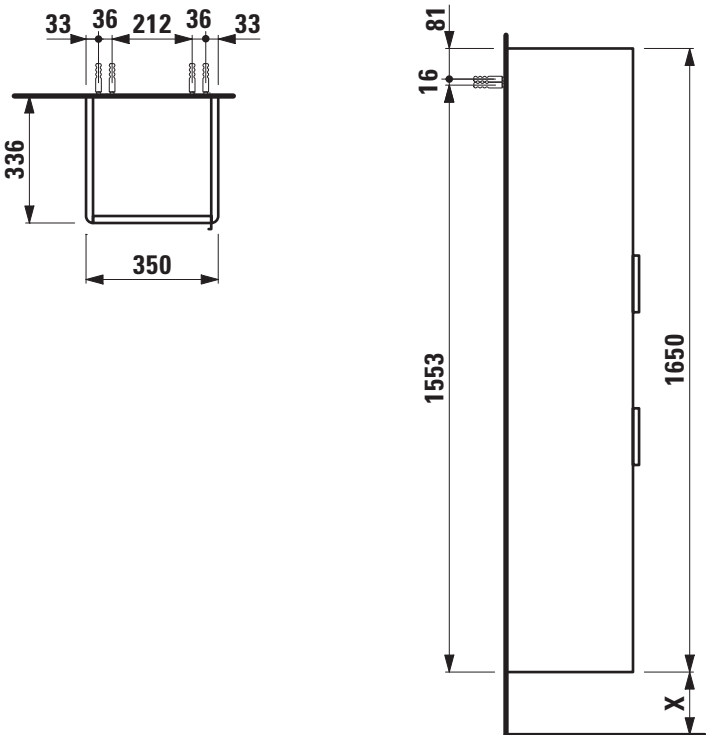
Tall cabinet 40271.1



TECHNICAL DATA

Order no.	40271.1 / door hinge left		Accessories excl	Laundry basket, order no. 49302.0
Dimensions (WxHxD)	350 x 1650 x 336 mm			Feet (2 pieces), aluminium, height X / order no. for combination with vanity units
Specification	White matt:	Body MDF with PVC foil (post-forming)		Base for Laufen Pro S: 283 mm / 40299.1, 293 mm / 40299.2
		Front MDF with PVC foil and ABS edges		Base for Val: 263 mm / 40299.0
	White glossy:	Body MDF with PET foil (post-forming)	Mounting acc. incl.	Installation set for furniture, order no. 49302.1
		Front MDF with PET foil and ABS edges	Mounting information	The walls installed on must meet the requirements of the furniture in terms of weight and the supplied fastening elements. If this cannot be guaranteed another method of installation needs to be chosen. For example with feet.
	Elm light/dark:	Body particle board with CPL foil	Colours	
		Front melamine coated particle board with ABS edges		
	anodized aluminium handle bar			
2 doors (soft-close mechanism)				
1 push and pull drawer				
4 glass shelves (adjustable)				
Weight	38,0 kg			260 – White matt
				261 – White glossy
				262 – Light elm
				263 – Dark brown elm
				999 – 39 other lacquered colours on request

TECHNICAL DRAWINGS / S 1 : 20



X = The exact hight must be set during installation.

BASE FURNITURE

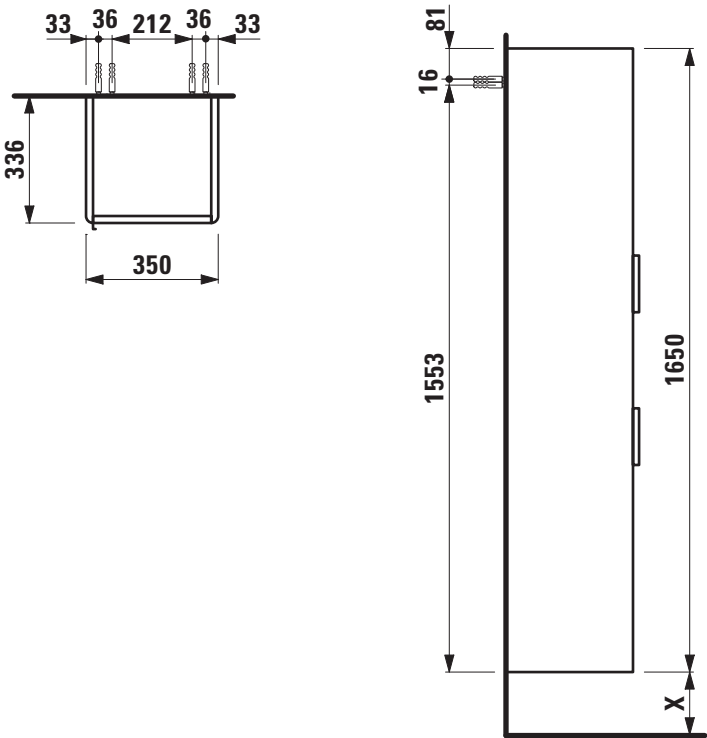
Tall cabinet 40271.2



TECHNICAL DATA

Order no.	40271.2 / door hinge right		Accessories excl	Laundry basket, order no. 49302.0
Dimensions (WxHxD)	350 x 1650 x 336 mm			Feet (2 pieces), aluminium, height X / order no. for combination with vanity units
Specification	White matt:	Body MDF with PVC foil (post-forming)		Base for Laufen Pro S: 283 mm / 40299.1,
		Front MDF with PVC foil and ABS edges		293 mm / 40299.2
	White glossy:	Body MDF with PET foil (post-forming)	Mounting acc. incl.	Base for Val: 263 mm / 40299.0
		Front MDF with PET foil and ABS edges	Mounting information	Installation set for furniture, order no. 49302.1
	Elm light/dark:	Body particle board with CPL foil	The walls installed on must meet the requirements of the furniture in terms of weight and the supplied fastening elements. If this cannot be guaranteed another method of installation needs to be chosen. For example with feet.	
		Front melamine coated particle board with ABS edges		
	anodized aluminium handle bar		Colours	260 – White matt
	2 doors (soft-close mechanism)			261 – White glossy
	1 push and pull drawer			262 – Light elm
	4 glass shelves (adjustable)			263 – Dark brown elm
				999 – 39 other lacquered colours on request
Weight	38,0 kg			

TECHNICAL DRAWINGS / S 1 : 20



X = The exact hight must be set during installation.

BASE FURNITURE

Medium cabinet

40261.1

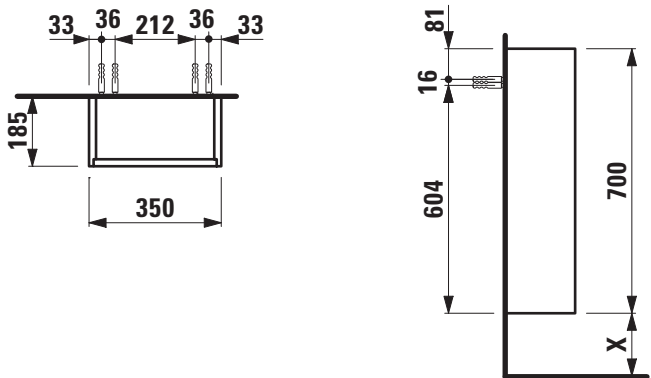
40261.2



TECHNICAL DATA

Order no.	40261.1 / door hinge left 40261.2 / door hinge right	Mounting acc. incl.	Installation set for furniture, order no. 49302.1
Dimensions (WxHxD)	350 x 700 x 185 mm	Mounting information	The walls installed on must meet the requirements of the furniture in terms of weight and the supplied fastening elements. If this cannot be guaranteed another method of installation needs to be chosen.
Matching for	Pack washbasin Laufen Pro S, order no. 86496.0, 86496.1, 86496.2, 86496.3		
Specification	Body/Front White matt: Body MDF with PVC foil (post-forming) Front MDF with PVC foil and ABS edges White glossy: Body MDF with PET foil (post-forming) Front MDF with PET foil and ABS edges Elm light/dark: Body/Front melamine coated particle board with ABS edges 1 push and pull door (soft-close mechanism) 2 glass shelves (adjustable)	Colours	260 – White matt 261 – White glossy 262 – Light elm 263 – Dark brown elm 999 – 39 other lacquered colours on request
Weight	10,5 kg		

TECHNICAL DRAWINGS / S 1 : 20



X = The exact hight must be set during installation.

BASE FURNITURE

Tall cabinet

40265.1

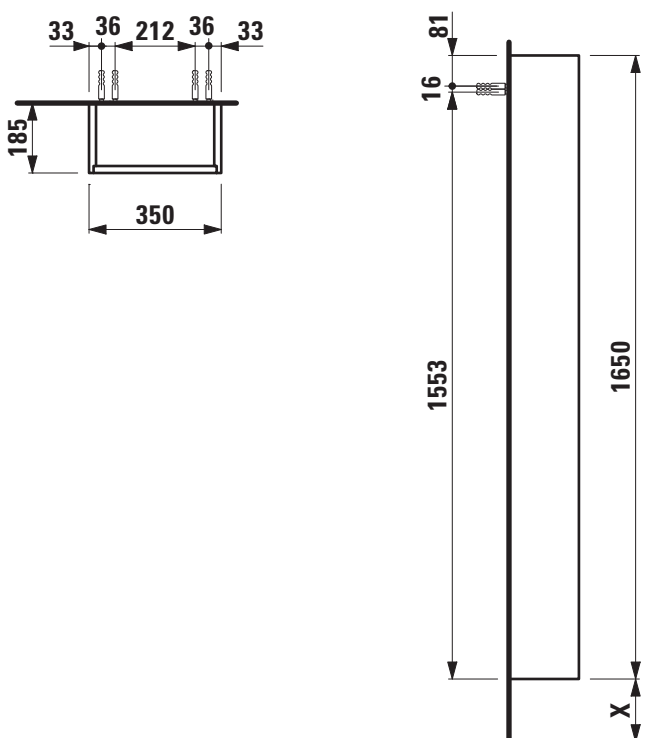
40265.2



TECHNICAL DATA

Order no.	40265.1 / door hinge left 40265.2 / door hinge right	Weight	22,5 kg
Dimensions (WxHxD)	350 x 1650 x 185 mm	Accessories excl.	Feet (2 pieces), aluminium, height X / order no. for combination with pack washbasins Laufen Pro S 86496.x: 293 mm / 48310.5
Matching for	Pack washbasin Laufen Pro S, order no. 86496.0, 86496.1, 86496.2, 86496.3	Mounting acc. incl.	Installation set for furniture, order no. 49302.1
Specification	<p>White matt: Body MDF with PVC foil (post-forming) Front MDF with PVC foil and ABS edges</p> <p>White glossy: Body MDF with PET foil (post-forming) Front MDF with PET foil and ABS edges</p> <p>Elm light/dark: Body/Front melamine coated particle board with ABS edges</p> <p>1 push and pull door (soft-close mechanism) 1 fixed shelf 4 glass shelves (adjustable)</p>	Mounting information	The walls installed on must meet the requirements of the furniture in terms of weight and the supplied fastening elements. If this cannot be guaranteed another method of installation needs to be chosen. For example with feet.
		Colours	<p>260 – White matt</p> <p>261 – White glossy</p> <p>262 – Light elm</p> <p>263 – Dark brown elm</p> <p>999 – 39 other lacquered colours on request</p>

TECHNICAL DRAWINGS / S 1 : 20



X = The exact height must be set during installation.

BASE FURNITURE

Tall cabinet

40268.1

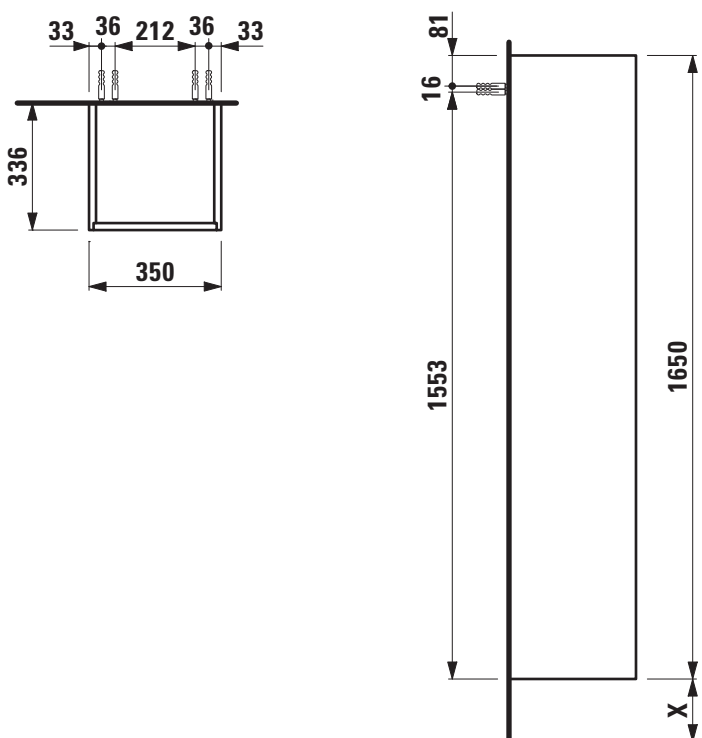
40268.2



TECHNICAL DATA

Order no.	40268.1 / door hinge left 40268.2 / door hinge right	Weight	34,5 kg
Dimensions (WxHxD)	350 x 1650 x 336 mm	Accessories excl.	Laundry basket, order no. 49302.0 Feet (2 pieces), aluminium, height X / order no. for combination with pack washbasins Laufen Pro S 86496.x: 293 mm / 48310.5
Matching for	Pack washbasin Laufen Pro S, order no. 86496.0, 86496.1, 86496.2, 86496.3	Mounting acc. incl.	Installation set for furniture, order no. 49302.1
Specification	White matt: Body MDF with PVC foil (post-forming) Front MDF with PVC foil and ABS edges White glossy: Body MDF with PET foil (post-forming) Front MDF with PET foil and ABS edges Elm light/dark: Body/Front melamine coated particle board with ABS edges 1 push and pull door (soft-close mechanism) 1 fixed shelf 4 glass shelves (adjustable)	Mounting information	The walls installed on must meet the requirements of the furniture in terms of weight and the supplied fastening elements. If this cannot be guaranteed another method of installation needs to be chosen. For example with feet.
		Colours	260 – White matt 261 – White glossy 262 – Light elm 263 – Dark brown elm 999 – 39 other lacquered colours on request

TECHNICAL DRAWINGS / S 1 : 20



X = The exact height must be set during installation.

BASE FURNITURE

Tall cabinet

40270.1

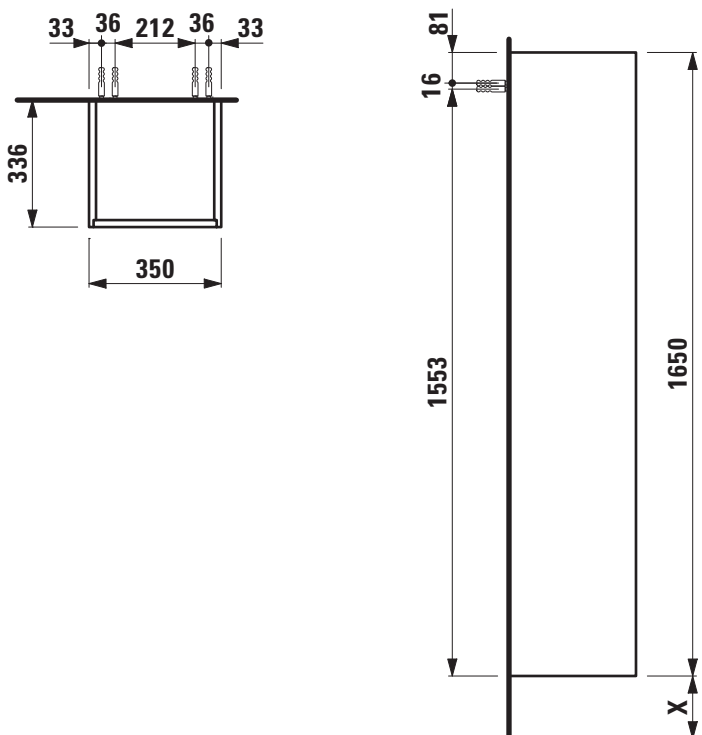
40270.2



TECHNICAL DATA

Order no.	40270.1 / door hinge left 40270.2 / door hinge right	Weight	32,5 kg
Dimensions (WxHxD)	350 x 1650 x 336 mm	Accessories excl.	Laundry basket, order no. 49302.0 Feet (2 pieces), aluminium, height X / order no. for combination with pack washbasins Laufen Pro S 86496.x: 293 mm / 48310.5
Matching for	Pack washbasin Laufen Pro S, order no. 86496.0, 86496.1, 86496.2, 86496.3	Mounting acc. incl.	Installation set for furniture, order no. 49302.1
Specification	White matt: Body MDF with PVC foil (post-forming) Front MDF with PVC foil and ABS edges White glossy: Body MDF with PET foil (post-forming) Front MDF with PET foil and ABS edges Elm light/dark: Body/Front melamine coated particle board with ABS edges 2 push and pull doors (soft-close mechanism) 1 open space 4 glass shelves (adjustable)	Mounting information	The walls installed on must meet the requirements of the furniture in terms of weight and the supplied fastening elements. If this cannot be guaranteed another method of installation needs to be chosen. For example with feet.
		Colours	260 – White matt 261 – White glossy 262 – Light elm 263 – Dark brown elm 999 – 39 other lacquered colours on request

TECHNICAL DRAWINGS / S 1 : 20



X = The exact height must be set during installation.

BASE FURNITURE

Tall cabinet

40272.1

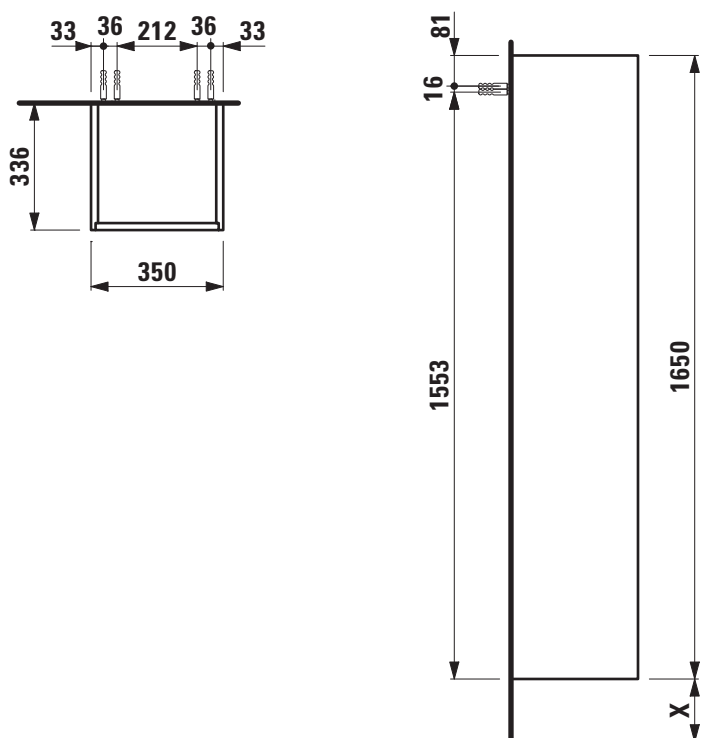
40272.2



TECHNICAL DATA

Order no.	40272.1 / door hinge left 40272.2 / door hinge right	Weight	36,0 kg
Dimensions (WxHxD)	350 x 1650 x 336 mm	Accessories excl.	Laundry basket, order no. 49302.0 Feet (2 pieces), aluminium, height X / order no. for combination with pack washbasins Laufen Pro S 86496.x: 293 mm / 48310.5
Matching for	Pack washbasin Laufen Pro S, order no. 86496.0, 86496.1, 86496.2, 86496.3	Mounting acc. incl.	Installation set for furniture, order no. 49302.1
Specification	White matt: Body MDF with PVC foil (post-forming) Front MDF with PVC foil and ABS edges White glossy: Body MDF with PET foil (post-forming) Front MDF with PET foil and ABS edges Elm light/dark: Body/Front melamine coated particle board with ABS edges 2 push and pull doors (soft-close mechanism) 1 push and pull drawer (soft-close mechanism) 4 glass shelves (adjustable)	Mounting information	The walls installed on must meet the requirements of the furniture in terms of weight and the supplied fastening elements. If this cannot be guaranteed another method of installation needs to be chosen. For example with feet.
		Colours	260 – White matt 261 – White glossy 262 – Light elm 263 – Dark brown elm 999 – 39 other lacquered colours on request

TECHNICAL DRAWINGS / S 1 : 20



X = The exact height must be set during installation.

Open shelf element with mirror
40295.0

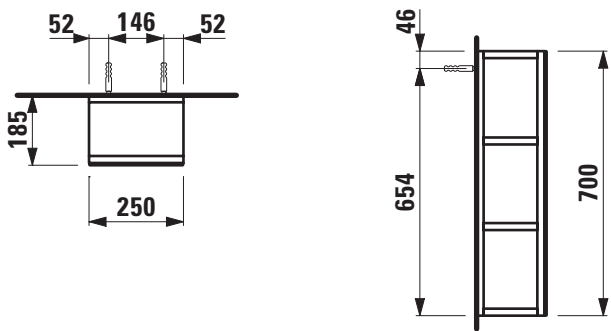


TECHNICAL DATA

Order no.	40295.0
Dimensions (WxHxD)	250 x 700 x 185 mm
Specification	Body White matt: MDF with PVC foil (postforming) White glossy: MDF with PET foil (postforming) Elm light/dark: Melamine coated particle board with ABS edges (stepforming) Front – mirror Open side at left and right With hidden wall fixation 2 fixed shelves
Weight	8,5 kg
Mounting acc. incl.	Installation set 49137.4

Mounting information	The walls installed on must meet the requirements of the furniture in terms of weight and the supplied fastening elements. If this cannot be guaranteed another method of installation needs to be chosen.
Colours	260 – White matt 261 – White glossy 262 – Light elm 263 – Dark brown elm 999 – 39 other lacquered colours on request

TECHNICAL DRAWINGS / S 1 : 20



BASE MIRROR CABINET

Mirror cabinet with LED light element

40275.1 / 40275.2

40276.1 / 40276.2

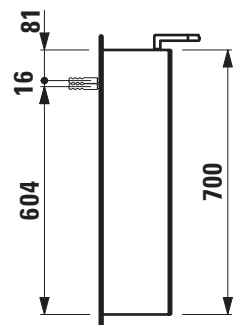
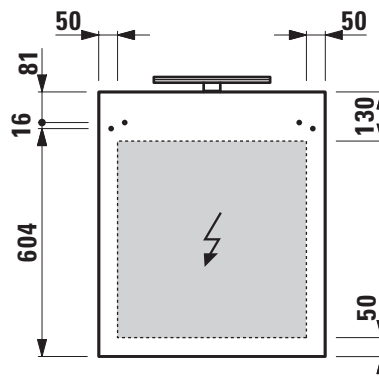
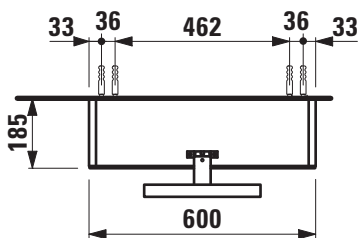
40277.1 / 40277.2



TECHNICAL DATA

Order no.	40275.1 / door hinge left, 1 power socket (EU) 40276.1 / door hinge left, 1 power socket (CH) 40277.1 / door hinge left, 1 power socket (UK) 40275.2 / door hinge right, 1 power socket (EU) 40276.2 / door hinge right, 1 power socket (CH) 40277.2 / door hinge right, 1 power socket (UK)	Mounting acc. incl.	Installation set, order no. 49302.1
Certified to	IP44	Mounting information	The fortification walls must meet the requirements of the furniture in terms of weight and the supplied fasteners. This can not be guaranteed, another method of attachment is chosen. 230V power supply required.
Dimensions (WxHxD)	600 x 700 x 185 mm	Colours	260 – White matt 261 – White glossy 262 – Light elm 263 – Dark brown elm 999 – 39 other lacquered colours on request
Specification	Body – inside melamine white White matt: MDF with PVC foil (postforming) White glossy: MDF with PET foil (postforming) Elm light/dark: Melamine coated particle board with ABS edges (stepforming) Door – Glass 3+3 mm 1 door with inside and outside mirrors With horizontal LED light element 1x 7W/m, 4000 Kelvin (daylight), IP44, 230V 2 glass shelves (adjustable)		
Weight	16,5 kg		

TECHNICAL DRAWINGS / S 1 : 20



BASE MIRROR CABINET

Mirror cabinet with LED light element

40280.2

40281.2

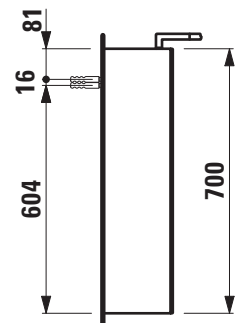
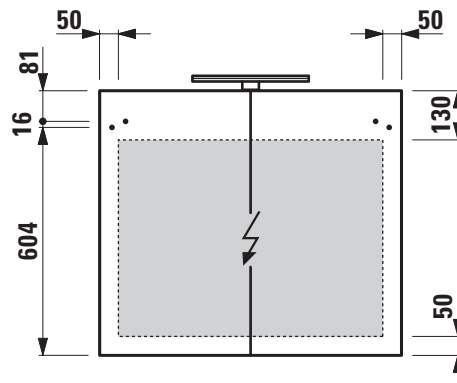
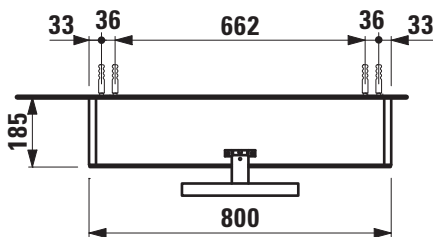
40282.2



TECHNICAL DATA

Order no.	40280.2 / 1 power socket (EU) 40281.2 / 1 power socket (CH) 40282.2 / 1 power socket (UK)	Mounting information	The fortification walls must meet the requirements of the furniture in terms of weight and the supplied fasteners. This can not be guaranteed, another method of attachment is chosen. 230V power supply required.
Certified to	IP44	Colours	260 – White matt 261 – White glossy 262 – Light elm 263 – Dark brown elm 999 – 39 other lacquered colours on request
Dimensions (WxHxD)	800 x 700 x 185 mm		
Specification	Body – inside melamine white White matt: MDF with PVC foil (postforming) White glossy: MDF with PET foil (postforming) Elm light/dark: Melamine coated particle board with ABS edges (stepforming) Door – Glass 3+3 mm 2 doors with inside and outside mirrors With horizontal LED light element 1x 7W/m, 4000 Kelvin (daylight), IP44, 230V 2 glass shelves (adjustable)		
Weight	22,0 kg		
Mounting acc. incl.	Installation set, order no. 49302.1		

TECHNICAL DRAWINGS / S 1 : 20



BASE MIRROR CABINET

Mirror cabinet with LED light element

40285.2

40286.2

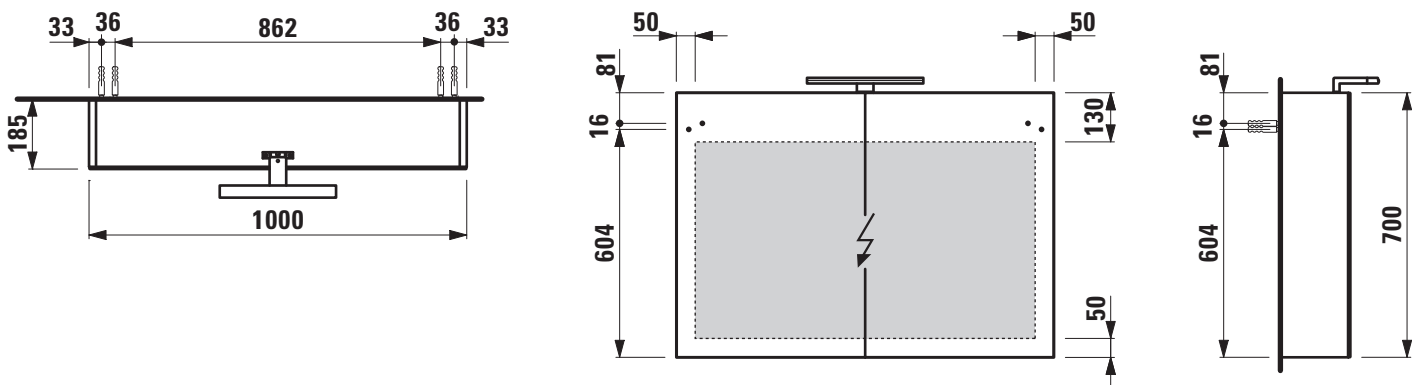
40287.2



TECHNICAL DATA

Order no.	40285.2 / 1 power socket (EU) 40286.2 / 1 power socket (CH) 40287.2 / 1 power socket (UK)	Mounting information	The fortification walls must meet the requirements of the furniture in terms of weight and the supplied fasteners. This can not be guaranteed, another method of attachment is chosen. 230V power supply required.
Certified to	IP44	Colours	260 – White matt 261 – White glossy 262 – Light elm 263 – Dark brown elm 999 – 39 other lacquered colours on request
Dimensions (WxHxD)	1000 x 700 x 185 mm		
Specification	Body – inside melamine white White matt: MDF with PVC foil (postforming) White glossy: MDF with PET foil (postforming) Elm light/dark: Melamine coated particle board with ABS edges (stepforming) Door – Glass 3+3 mm 2 doors with inside and outside mirrors With horizontal LED light element 1x 7W/m, 4000 Kelvin (daylight), IP44, 230V 2 glass shelves (adjustable)		
Weight	25,0 kg		
Mounting acc. incl.	Installation set, order no. 49302.1		

TECHNICAL DRAWINGS / S 1 : 20



BASE MIRROR CABINET

Mirror cabinet with LED light element

40290.2

40291.2

40292.2



TECHNICAL DATA

Order no.	40290.2 / 1 power socket (EU) 40291.2 / 1 power socket (CH) 40292.2 / 1 power socket (UK)	Mounting information	The fortification walls must meet the requirements of the furniture in terms of weight and the supplied fasteners. This can not be guaranteed, another method of attachment is chosen. 230V power supply required.
Certified to	IP44	Colours	260 – White matt 261 – White glossy 262 – Light elm 263 – Dark brown elm 999 – 39 other lacquered colours on request
Dimensions (WxHxD)	1200 x 700 x 185 mm		
Specification	Body – inside melamine white White matt: MDF with PVC foil (postforming) White glossy: MDF with PET foil (postforming) Elm light/dark: Melamine coated particle board with ABS edges (stepforming) Door – Glass 3+3 mm 2 doors with inside and outside mirrors With horizontal LED light element 1x 7W/m, 4000 Kelvin (daylight), IP44, 230V 2 glass shelves (adjustable)		
Weight	32,0 kg		
Mounting acc. incl.	Installation set, order no. 49302.1		

TECHNICAL DRAWINGS / S 1 : 20

